

ERIC PAUL

STAMPS

Established 1971

List N° 85

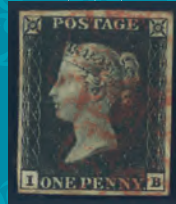
Descriptions

BURSLEM CDS



1264

Plate 1b
RE-ENTRY



↑ 1263

2^D Spec Pp 131
Plate 14
H. H.



1266

6^D SG125
Spec J81d



1271

5/- SG 263 Pair



1283

1/2^D SG 041a
I FOR L



1275

1/2^D SG 418a wi
Sideways
Inverted



1287

1/- SG 024



1276

1913
Multiple Cypher Set



1286

GORDON
RELIEF
SOUAKIN
1/- SG 196



1292

BAHAMAS
1/- Z5



1297

P O BOX 44 MARPLE CHESHIRE ENGLAND SK6 7EE
TEL: +44(0)161 427 2101 WEB SITE - www.ericpaul.co.uk
EMAIL: info@ericpaul.co.uk

ALL STAMPS LISTED BELOW HAVE BEEN PHOTOGRAPHED
ALL STAMPS ARE WITHOUT DEFECT & FINE USED UNLESS OTHERWISE STATED

ERIC PAUL (STAMPS)

G.B.P.S.
P.T.S.
M. & D.P.T.A.

P O BOX 44
MARPLE
CHESHIRE
SK6 7EE

TELEPHONE
0161 427 2101
(ANYTIME)

Email: info@ericpaul.co.uk
Web Site www.ericpaul.co.uk

POSTAL ONLY

LIST NUMBER 85

TERMS: STRICTLY UNSOLD

REGULAR CLIENTS – Items sent on approval

NEW CLIENTS - Cash with order please. **FULL REFUND** if not satisfied and items returned within 7 days.

ALL MAJOR CREDIT & DEBIT CARDS ACCEPTED

IMPRIMATUR - PROOFS - ESSAYS - Etc

- | | | |
|---|---|------|
| 1 | Imprimatur 1d SG 172 Plate 17 Lilac. Fresh Mint example. Cat £250 | £175 |
| 2 | Imprimatur ½d SG 187 Slate Blue Plate 7?. Mounted Mint very possibly slightly toned. Cat £350 | £175 |
| 3 | 3d SG 191 lettered CK. Fine Mint example of the Colour Trial Purple on Blue. Cat £550 | £295 |
| 4 | 2½d Jubilee SG 201 Spec K31(t). Superb U/M Overprint Cancelled Type 14. Cat £1,000 Mounted Mint | £800 |
| 5 | 1881 Proof 1d Lilac on Buff. Lovely bottom marginal unused copy. Cat from £225 | £150 |
| 6 | GV 6d Proof on thin card with manuscript Grey Green No 20 below. Very Fine. Ex Stothert. Cat £950 | £300 |
| 7 | 1960 G.L.O. SG 619 & 620. Two values, stamp size photographic proofs of proposed Essays by Michael Gorman. 3d depicts post Horn, 1/3d depicts Post Boy. Nice addition to QEII collection, especially as both are ex Michael Gorman archive. | £175 |
| 8 | 1965 Proof 4d Battle of Britain by Farrar Bell. Excellent proof on card. | £125 |

1840 1d BLACKS

- | | | |
|----|---|------|
| 9 | Plate 1a SG 3 lettered LL. Very attractive 4 margin, Red Maltese Cross, difficult early plate. Cat £375 | £250 |
| 10 | Plate 1b SG 2 lettered HI. Neat 4 margin with clear Red Maltese Cross. Cat £375 | £250 |
| 11 | Plate 2 SG 2 lettered EG. 4 margin with good Red Maltese Cross. £375 | £150 |
| 12 | Plate 2 Matched Pair Re-entry SA. 1d Black – superb 4 margin with neat Red Maltese Cross still on piece. 1d Red almost 4M just cut into at SW sq. Both stamps clearly show the Re-entry. Cat £1,100 | £400 |
| 13 | Plate 3 SG 2 KI. 3 good margins, 4th very close to touching at left side of NW sq. Red MX. Cat £500 | £120 |
| 14 | Plate 4 SG 2 lettered LF. Neat 4 margin, mark in left margin opposite chin, excellent Red MX. Cat £400 | £200 |
| 15 | Plate 4 SG 3 lettered SB. 4 margin on worn plate, Black Maltese Cross, thin in top of NW sq. Cat £400 | £125 |
| 16 | Plate 5 SG 2 wi Spec AS25(e) NF. 3½ margin Red Maltese Cross, Scare Inverted Watermark. Right margin just cut into towards “F” sq. Top NW sq and right side line NE sq extremely weak. Cat £3,750 | £850 |
| 17 | Plate 5 lettered TF. 4 margin with Red Maltese Cross. Cat £400 | £150 |
| 18 | Plate 6 SG 2 lettered LL. Good to huge 4 margin with indistinct Red Maltese Cross. Variety dots in SW square and below “Y” of PENNY. Statham P 178. A little aged. Cat £375 | £250 |
| 19 | Plate 7 SG 2 MC. 4 margin good on 3 sides close at left but not touching, Red Maltese Cross. Cat £400 | £125 |
| 20 | Plate 8 SG 2 lettered OH. Attractive 4 margin with Red Maltese Cross. Cat £525 | £180 |
| 21 | Plate 9 SG 3 lettered BA. Beautiful 4 margin with neat Black Maltese Cross. Cat £625 | £275 |
| 22 | Plate 10 SG 2 lettered LG. 4 margin, cut across below “G” sq. Black Maltese Cross, suspicion of a tiny thin in right margin. Difficult Plate. Cat £950 | £150 |
| 23 | Plate 10 Spec AS66(h) Matched Pair lettered JK. Black with Red Maltese Cross scarce on this plate both with 2/3 margins, two dots on bottom line joined by scratch. Statham P 212. Cat £1,690 | £150 |

1840 2d BLUES

- | | | |
|----|--|------|
| 24 | Plate 1 SG 5 FC. Very attractive 3M just touching along base. Lovely Red Maltese Cross. Cat £975 | £150 |
| 25 | Plate 2 SG 5 BC. Attractive 4M, part of adjoining stamp above. Slightly smudged Black MX. Cat £975 | £150 |

**ALL STAMPS LISTED BELOW HAVE BEEN PHOTOGRAPHED
ALL STAMPS ARE WITHOUT DEFECT & FINE USED UNLESS OTHERWISE STATED**

1d RED IMPERFS & 2d BLUES SG NUMBERS

26	1d SG 7 Plate 9 lettered OB. 4 margin with "O" Flaw, Double Letter "B". Cat £130 Plate £180	£40
27	1d SG 8 Unplated Red Brown lettered NB. Good 4 margin, strong red element. Cat £35	£10
28	1d SG 8a Very Blued Paper ID. Very attractive 4M with excellent 831 numeral for Wakefield. Cat £35	£15
29	1d SG 9 Unplated Pale Red Brown (worn plate) lettered NH. 4M London Chief Office 58. Cat £45	£15
30	1d SG 10 Unplated Deep Red Brown lettered OA. Good 4 margin, London 11 in Diamond. Cat £50	£20
31	1d SG 12 Plate 44 Orange Brown lettered HJ. Attractive 4 margin, excellent Irish 186 Dublin. Cat £275	£50
32	2d SG 13 Plate 3 lettered AD-AE. Neat Pair with margins all round, close at left of NW square of AD. Cancelled by two very good 575's for Norwich numerals.	£50
33	2d SG 14 Plate 3 lettered BJ. 4 margin, Double letter "J" and Scottish 1 for Aberdeen .	£20
34	2d SG 14 Plate 3 LL. Good to very large 4 margin with parts of adjoining stamp below (large) and left.	£40
35	2d SG 15 lettered OD. 4 margin, very good Black Maltese Cross . Cat £275	£60

1841 2d BLUES SINGLES & MULTIPLES

36	Plate 3 lettered BJ-BL. Superb Strip of 3, margins all round, large at right, close but not touching NW square of BJ. Shows alignment drop Statham P 3649. Cat £270+	£110
37	Plate 3 lettered CK-CL. Superb Pair with margins all round with parts of adjoining stamps above and at side cancelled by two superb 62 numerals for Belfast . Cat £180+	£70
38	Plate 3 SG 14 LG. Excellent 4M, horizontal G/L through value (2), vertical G/L (1) in SE sq. Cat £90	£35
39	Plate 3 SG 14 lettered NK-NL. Lovely 4 margin Pair, parts of adjoining stamps above both. Superb Pair.	£80
40	Plate 3 SG 13 Pale Blue lettered PE-PF. Pair, margins all round, lovely Basal Shift on PE. Cat £220+	£80
41	Plate 4 Spec ES15b lettered CD-CE. Excellent Pair, margins all round and clearly showing the CE Re-entry in POSTAGE, TWO PENCE and margin below . Cat £325+	£140
42	Plate 4 SG 14 lettered DI. Superb good to large 4 margin. Cat £90	£35
43	Plate 4 Strip of 5 GA-GE. Variety on GD mark in white line above "N" of PENCE . Statham P 3653. GC-GE full margins all round , GA-GB just slightly cut into above. Would make excellent strip of 4.	£100
44	Plate 4 Deep Blue Vertical Strip of 3 KE-ME. Margins just touching in a couple of places. Appears to be cancelled by 765 for Reynoldstone , which is Very Rare . Horizontal filing crease through LE.	£70
45	Plate 4 lettered NB-NE. Brilliant Strip of 4 , margins all round, very large above, NE dot in top of "E" sq.	£140

1d & 2d STARS 1854-58 by SG NUMBERS

46	1d SG 17 Spec C1 CD. Well centred, upright London District 46 Roller . Plated as 173 but not checked.	£20
47	1d SG 18 Spec C1 Plate R6 lettered CE. Quite well centred unused . Cat £375	£50
48	1d SG 18 Yellow Brown Unplated lettered OI. Quite well centred, fine used. Cat £50	£15
49	2d SG 19 Deep Blue Plate 4 lettered GH. Well centred fine used, marks in "H" square, which appeared early in the 1b gauge period. Cat £100	£20
50	2d SG 20 Plate 4 GB. Well centred, cancel clear of Queen's profile, soil mark in top right. Cat £110	£20
51	2d SG 20a Spec F4 Plate 5 lettered ID. Well centred, good used. Quite difficult. Cat £350	£70
52	1d SG 21 Spec C4 CG. Well centred with part 466 Liverpool . Plated as 1 but not checked. Cat £65	£20
53	1d SG 22 Spec C2 Plate R6 JJ. Well centred good used, London District 5 in Diamond . Cat £100	£30
54	2d SG 23 Plate 4 lettered IE. Well centred fine used tied to piece by light London District 23 . Cat £225	£70
55	2d SG 23a Blue Spec F3 Plate 5 QB. Centred a little low, good used, slight ageing. Difficult. Cat £350	£40
56	1d SG 24 Red Brown Spec C3 Plate 12 lettered GH. Well centred fine used. Cat £70	£30
57	1d SG 26 Red Brown Spec C5 lettered AF. Well centred, good used. Cat £130	£35
58	2d SG 27 Spec F5 Plate 5 lettered QI. Well centred very fine used. Cat £450	£150
59	1d SG 29 Red Brown Spec C8 lettered GD. Fine used centred to right. Cat £22	£10
60	1d SG 30 Brick Red Spec C8 lettered KC. Quite well centred, Scottish 309 for Stonehaven . Cat £45	£15
61	1d SG 32 Brown Rose Spec C8 Plate 38 lettered SH. Well centred fine used, few short perfs. Cat £55	£10
62	2d SG 34 Spec F6 Plate 5 AF. Well centred, part sideways duplex 321 and Grantham CDS . Cat £70	£25
63	2d SG 35 Spec F7 Plate 6 lettered PH. Well centred fine, 818 for Tunbridge Difficult. Cat £70	£20
64	1d SG 36 Spec C11 lettered PI. Well centred good used. Plated as 36 but not checked. Cat £80	£30
65	2d SG 36a Spec F8 Plate 6 lettered EJ. Quite well centred fine used. Cat £325	£100
66	1d SG 38 Pale Red LJ. Good used, Scottish 174 numeral and Hawick part CDS. Difficult value. Cat £80	£25
67	1d SG 39 Pale Rose Spec C10 lettered AK. Well centred very fine used. Cat £35	£10
68	1d SG 40 Rose Red Spec C10 Unplated lettered FI. Cat £8	£5
69	1d SG 41 Deep Rose Red Spec C10 lettered FF. Well centred, good 706 Shipston on Stour . Cat £20	£10
70	1d SG 42 Rose Red Spec C12 Unplated lettered FI. Cat £40	£10

2d STARS 1854-58 (SPECIALS)

71	SG 19 Plate 4 lettered JL. Well centred, clearly showing "mark in white line below "O" of POSTAGE, perfs at bottom appear to show parted from others by scissors.	£30
72	SG 19 Plate 4 lettered LD. Lovely well centred, with mark in D (corrosion) Statham P 3673. Cat £100	£25
73	SG 20 Pale Blue Plate 4 OC-OE. Attractive strip of 3, quite well centred, 51 in oval for London Chief Office . Cat £380	£95

**ALL STAMPS LISTED BELOW HAVE BEEN PHOTOGRAPHED
ALL STAMPS ARE WITHOUT DEFECT & FINE USED UNLESS OTHERWISE STATED**

2d STARS 1854-58 (SPECIALS) - continued

74	SG 20a Plate 5 lettered MC. Centred a little left, neatly cancelled by London Double 47 in Diamond used on parcels etc. Difficult issue. Cat £350	£80
75	SG 23 Plate 4 lettered GG-GH. Quite well centred pair with Scottish 92 Cupar , marks in "G" and "H", appeared late in the perf period. Cat £450+	£150
76	SG 23 Spec F2 Plate 4 BJ. Excellent Scottish 13I for Edinburgh , "J" square shows marks that Statham says appeared in the Imperf period. Cat £225	£50
77	SG 23a Spec F3 Plate 5 lettered JA-JB. Quite well centred Pair with Greenock Experimental Cancel which includes GREENOCK NO 21 1856 CDS which is not common on this issue. Cat £700+	£150
78	SG 34 Spec F6(e) TK-TL . Good Pair, TL double letter , neat London 47 roller cancel . Cat £140+	£50

EMBOSSSED ISSUES

79	1/- SG 54 . Lovely, clear on all sides with neat 545 S/W Duplex Newcastle upon Tyne . Cat £1,000	£250
80	1/- SG 56 & 2d Blue SG 15 Plate 4 lettered CD. Good 1/- which has 3 clear to large margins and 336 for Harleston , scissor cut at lower left, with good 2d Imperf, margins all round, tied to piece by excellent 336 , with pen 1sh 2d below. Cat £1,110	£200
81	10d SG 57 Brown . Lovely, margins clear on 3 sides. Neat London 13 in Diamond . Nice example of a difficult stamp. Cat £1,500	£350
82	6d SG 58/9 . Margins clear on 3 sides. Neat London 16 in Diamond , slightly worn. Cat £1,000	£175

1d RED PLATES with CDS (see Irish, NPB, Railways, Squared Circles & Wales sections)

83	Plate 71 lettered TF. Good, very fine used, part CDS, difficult on early plates.	£40
84	Plate 74 lettered EI. Part J(?) A 22 68 CDS , difficult early plate with CDS.	£30
85	Plate 81 lettered PI. Brilliant light OC 27 1864 (full year) Code A CDS . Very unusual with full year date.	£50
86	Plate 87 lettered SA. JY 25 65 CDS .	£20
87	Plate 91 lettered JD. Large part DUBLIN JU 11 66 CDS	£25
88	Plate 93 lettered NE. Good WORTHING OC 3 65 Code C CDS	£35
89	Plate 102 lettered SC. Lovely ABBEY TOWN OC 24 67 Code C CDS	£40
90	Plate 111 lettered BI. Interesting copy, part LONDON MY 11 68 CDS said to be early date for this plate.	£20
91	Plate 112 lettered ML. LONDON AU 12 70 Code NF CDS	£20
92	Plate 118 lettered OI. Central CHARING CROSS JY 15 71 Code D CDS	£40
93	Plate 119 lettered DA. LONDON MR 2 - 70 Code IH CDS	£25
94	Plate 122 lettered BA. LONDON S.W. JU 25 74 Code X CDS , centred a little high to the left.	£30
95	Plate 124 lettered DI. Lovely copy with part CDS well clear of Queen's profile.	£40
96	Plate 130 lettered OK. BLACKBURN AU 20 70 CDS	£20
97	Plate 134 lettered LG. Lovely looking, small part numeral and large part --- FORD C JA 27 72 CDS	£10
98	Plate 140 lettered CB. Part - 9 70 CDS	£10
99	Plate 151 lettered CK. Attractive part - STON E - Y 19 73 CDS	£15
100	Plate 152 lettered KK. Lovely light possibly identifiable CDS	£20
101	Plate 156 lettered LE. Interesting large part --- ALADE O - U 20 74 CDS	£15
102	Plate 158 lettered OG. NEWCASTLE on TYNE MY 16 - Code K CDS	£40
103	Plate 167 lettered LA. Lovely BRIDLINGTON QUAY FE 28 77 Code B CDS . Centred a little high left.	£30
104	Plate 174 lettered LC. Attractive, possibly RHYL NO 1 77 Code E CDS	£35
105	Plate 177 lettered HG. Stunning copy with KIRKCUDBRIGHT FE 3 76 Code A CDS	£50
106	Plate 180 lettered ID. Excellent small part CDS	£20
107	Plate 184 lettered OH. Lovely light CDS	£25
108	Plate 187 lettered SH. JU 11 79 CDS	£30
109	Plate 200 lettered PG. Small part Navan CDS	£15
110	Plate 203 lettered LG. Tied to piece by SHAFTSBURY 16 FE 78 Code C with a similar CDS alongside.	£40
111	Plate 207 lettered OA. Lovely neat part - U 23 78 CDS	£25
112	Plate 207 & 200 FD, BB. Interesting duo, used and tied together by two TORQUAY T SP 15 78 CDS	£50
113	Plate 222 lettered FB. Very fine used copy, very lightly cancelled, a difficult plate. Cat £50	£20
114	Plate 216 lettered BE Inverted Watermark . Good example with part CDS - U 13 79 and part numeral.	£80

1d RED PLATES - MULTIPLES USED

115	Plate 93 Strip of 4 lettered FC-FF. Beautiful Very Fine Used with light Irish cancels.	£20
116	Plate 99 Block of 4 lettered NG-NH/OG-OH. Good used, cancelled by 3 good strikes of the Irish 206 numeral for Edgworthstown (Long.), slightly off centre. Difficult block and cancel.	£30
117	Plate 122 Vertical Block 6 PC-PD/QC-QD/RC-RD LIVERPOOL 19 OC 72 Code A EXCHANGE CDSs	£165
118	Plate 123 Block of 12 LI-LL/MI-ML/NI-NL. Excellent HULL AU 272 Code A CDS's Scarce multiple.	£300
119	Plate 148 lettered LH/MH. Brilliant vertical Pair with LEEDS 7 AU 73 Code A CDS's	£50
120	Plate 149 Block of 6 MJ-ML/NJ-NL. Lovely multiple, EDINBURGH JU 14 72 CDS's , centred little right.	£150
121	Plate 157 Vertical Block of 10 PF-PG, QF-QG, RF-RG, SF-SG, TF-TG. Brilliant, each stamp cancelled by light but readable FINTONA OC 23 72 CDS's	£300

ALL STAMPS LISTED BELOW HAVE BEEN PHOTOGRAPHED
ALL STAMPS ARE WITHOUT DEFECT & FINE USED UNLESS OTHERWISE STATED

1d RED PLATES – SINGLES MINT

122	1d Plate 73 CL. Lightly hinged marginal mint, very fresh, centred to right, small mark on left margin.	£40
123	1d Plate 74 lettered MI. Fresh mint, centred to bottom. Cat £60	£25
124	1d Plate 114 OE. Fresh mint, difficult plate, strange top left corner (NW) possibly pulled perf. Cat £325	£75
125	1d Plate 119 lettered TH. Fine mint. Cat £65	£30
126	1d Plate 127 lettered IB. Very fine mint. Cat £75	£30
127	1d Plate 130 ED. Well centred, very fresh, very lightly hinged, almost Unmounted Mint . Cat £75	£40
128	1d Plate 134 lettered NI. Well centred, fine mint. Cat £27	£15
129	1d Plate 140 lettered NL. Unused/mint, some gum, centred very slightly low to the right. Cat £32	£10
130	1d Plate 142 lettered RD. Fresh mint, quite good centring for this plate. Cat £95	£30
131	1d Plate 145 EK. Unmounted Mint , quite good centring slight toning spots on base perfs. Cat £48+	£20
132	1d Plate 172 lettered NJ. Unmounted Mint centred to the left. Cat £48+	£25
133	1d Plate 196 lettered AB. Good looking mint/unused copy. Cat £70	£10
134	1d Plate 212 lettered OK. Unmounted Mint , well centred. Cat £80+	£40
135	1d Plate 215 lettered TJ. Good, apparently Unmounted Mint with full inscription margin below, some slight gum creasing as usual and a few rust spots. Cat £90 without selvedge.	£70

1d RED PLATES – MULTIPLES MINT

136	Plate 109 RA-RB/SA-SB. Lovely fresh Mint Block of 4 with full deckle edge. 3 U/M quite well centred.	£350
137	Plate 115 FB-FC/GB-GC. Well centred Block of 4 , Very Scarce Mint , few slightly trimmed perfs.	£300
138	Plate 143 MB-MD/NB-ND/OB-OD. Well centred Block of 9 with 7 Unmounted Mint , a little gum cracking as usual.	£500
139	Plate 174 lettered QD-QE/SD-SE. Well centred vertical Block of 6 with 4 Unmounted Mint .	£250

UNUSUAL 1d RED PLATES

140	Plate 72 lettered SJ-SK. Attractive Pair with SK having an unprinted bit near Queen's chignon caused by a tiny piece of foreign matter on surface of paper which has fall off after printing.	£25
141	Plate 122 PA. JA 29 70 CDS with Blue Foreign cancel on top. Faint horizontal crease, very unusual.	£20
142	Plate 136 FA. Clear Bath 53 with full K P H DE 14 71 CDS alongside except all of A and T and bottom parts of B and H in BATH missing. Cat £20	£15
143	Plate 139 lettered GL. Interesting, with clear misplaced watermark to left with parts of marginal rules.	£20
144	Plate 197 OI. Good used, excellent G.22 Whitney Type "H". Difficult plate and unusual pmk for Eltham .	£10
145	Plate 206 lettered LI. Centred to right which might have been torn from the sheet before posting so large part missing, then tied to piece by part LONDON 9 NO 79 CDS . Difficult plate.	£25
146	Plate 211 JF. Excellent tied to piece with PRESTON 8 AU 78 CDS alongside. Difficult plate. Cat £25	£15
147	Plate 208 TJ. Fine used, Inverted Wmk and J T M Perfin. Unusual combination, centred a little to right.	£50

½d, 2d and 1½d PLATES MINT & USED

148	½d SG 48/49 Plate 4 lettered KK. Very fine used with light postmark clear of most of profile. Cat £50	£20
149	½d SG 48/49 Plate 5 lettered PO. Lovely small part CDS across SW corner. Cat £30 + 200%	£25
150	½d SG 48/49 Plate 11 lettered PN. Very fine used, part Scottish – 79 numeral. Cat £30	£10
151	½d SG 48/49 Plate 12 Pair lettered PA-PB. Well centred, full gum with creases owing to it being double gummed. Cat £240	£40
152	½d Plate 13 & 1d Plate 196. Good pair tied to piece by two 930 numerals for York .	£10
153	2d Plate 9 State 1 lettered DL. Very fine used, Large Crown Type 1	£10
154	2d Plate 9 State 2 lettered HK. Centred to the right, after 1866 repair by corrosion cleaning, thinning the check letters in the NE and SE squares. Cat £75	£35
155	2d Plate 9 State 2 lettered HL. Centred to right showing recutting of the left side line shows extensive retouch to right of network of HK. Cat £75	£40
156	2d Plate 9 State 2 lettered PK. Neatly used, after corrosion cleaning and 1866 repair by retouch to right network, centred low. Cat £75	£30
157	2d Plate 9 State 3 lettered FK. After 1868 repair by Re-entry. Difficult. Centred low to right showing the Re-entry. Trimmed perfs at left. Cat £250	£40
158	2d SG 45 Plate 12 TI. Interesting, heavy Burr Rub at left, centred a little high from the "T" Row. Cat £140	£30
159	1½d SG 51 Plate 1 lettered BB. Excellent Whitney Type "H" 629 for Fleetwood . Cat £110	£30
160	1½d SG 51/2 Plate 3 lettered PJ-PK. Attractive Pair with central Aberdeen 1 numeral . Cat £150+	£25

OVERPRINTS & UNDERPRINTS

161	J & C BOYD & CO 1d Spec Pp14 Plate 206 lettered KJ. Good used copy. Cat from £50	£20
162	J & C BOYD & CO 1d Spec Pp14 Plate 224 EB. Difficult plate, trimmed along base. Plate Cat £65	£20
163	COPESTAKE MOORE 1d Spec Pp35 Plate 114 HK. Fine used on a difficult plate. Cat from £30	£35
164	COPESTAKE MOORE 1d Spec Pp35 Plate 169 HL. F/U, couple of slight short perfs. Cat from £30	£25
165	COPESTAKE MOORE ½d Spec Pp39 Plate 8 DJ. Very fine used difficult plate with full underprint.	£100
166	COPESTAKE MOORE ½d Spec Pp39 Plate 13 RA. Fine used, difficult with full underprint. Cat from £75	£50
167	G.E.R. UNDERPRINT Spec Pp125 Plate 151 lettered EJ. Good used, trimmed. Cat from £150	£20

ALL STAMPS LISTED BELOW HAVE BEEN PHOTOGRAPHED
ALL STAMPS ARE WITHOUT DEFECT & FINE USED UNLESS OTHERWISE STATED

OVERPRINTS & UNDERPRINTS - continued

168	O.U.S. OVERPRINT upwards 1d Spec Pp223 Plate 76 lettered SK. Fine used, small tear. Cat £35	£10
169	O.U.S. OVERPRINT upwards 1d Spec Pp223 Plate 103 lettered KJ. Fine used. Cat from £35	£20
170	SAMUEL MONTAGUE & Co 2d Pp185 Plate 9 lettered BA. Originally thought to be Pp192, now not believed to exist. Cat £675	£400
171	W.H. SMITH 1d Spec Pp285 Plate 124 DB. Very fine used, full perfs and underprint. Cat from £90	£75
172	W.H. SMITH 1d Spec Pp285 Plate 131 HE. Very fine used, full perfs and underprint. Cat from £90	£75

SPECIMENS

173	1d Plate 198 Spec G1(v) Type 9 lettered MG. Well centred fine Mint, tiny surface rub. Cat £225	£130
174	2½d Plate 16 Rosy Mauve Inverted Watermark lettered EL. Unused original gum right hand marginal Overprinted Specimen Type 9. Unusual combination of Inverted Watermark and Specimen Overprint and Marginal. Unlisted by SG. Cat £1,500 for Inverted Watermark alone	£500
175	½d SG 197(s) Type 9. Good mint copy. Cat £35	£20
176	6d SG 208(s) Type 9. Attractive Mint but faint crease hardly noticeable from the front. Cat £65	£25
177	9d SG 209(s) Type 9. Mint with couple of age stains on reverse. Cat £70	£25

SURFACE PRINTED

178	1/- SG 71 Deep Green. Part MANCHESTER DE 9 61 CDS with part 498 numeral. Difficult shade, very slightly trimmed perfs towards NW. Cat £550	£100
179	9d SG 87 lettered KH. Good Mint copy of this difficult value. Re-perfed at right. Cat £4,000	£800
180	3d SG 103 Plate 8 Block of 4. Very attractive with 4 upright intersecting COVENT GARDEN MARKET OC 10 72 W.C. CDS's.	£150
181	9d SG 110 Plate 4 lettered KI. Good wing margin (perf) with 447 for Leeds. Cat £325	£30
182	9d SG 111 Plate 4 lettered FH. Light OC – 75 CDS on perf wing margin. Good example of the shade. Two missing perfs at right. Cat £300	£80
183	9d SG 110 Plate 4 lettered KI. Good perf wing margin copy with 447 for Leeds. Cat £325	£40
184	9d SG 111 Plate 4 lettered FH. Light OC – 75 CDS on perf wing margin. Good example of the shade. Two missing perfs at right. Cat £300	£60
185	2/- SG 120b Milky Blue lettered CI. Very good looking lightly used, cancelled by part LONDON LS OC 14 date stamp. Re-perfed at right side. Scarce stamp. Cat £2,000	£500
186	2/- SG 121 Brown lettered MC. Excellent looking with LOMBARD ST Late Fee Tombstone cancel for MY 22 80 very neat. Couple of small faults including slightly trimmed perfs towards SE corner at base. Early use for this. (Issued 27 February 1880) Cat £4,200	£700
187	6d SG 125 Plate 12 lettered LD. Very Fresh Mint, original gum, re-perfed at right. Cat £1,900	£295
188	5/- SG 127 Plate 2 lettered CF. Nice used part LONDON 8- in Diamond. Cat £1,500	£150
189	5/- SG 134 Plate 4 lettered BE. Registered cancel, one missing perf at left. Cat £3,800	£395
190	2½d SG 141 Plate 16 lettered PA. Fresh looking Mint/Unused, faint crease visible on back. Cat £525	£95
191	2½d SG 142 Plate 17 lettered HE. Mint full gum, a little heavily mounted. Cat £575	£120
192	3d SG 144 Plate 19 lettered CD. Superb wing margin with excellent full LONDON E.C. DE 4 79 Code B squared circle. Cat 80+100%	£75
193	4d SG 152 Plate 15 TF. Rare short stamp from "T" Row, very difficult, slightly double CDS. Cat £475	£300
194	4d SG 153 Plate 15 lettered PI. Fresh looking Mint copy, centred to right. Cat £1,600	£295
195	4d SG 154 Plate 17 QJ. Excellent, small part LONDON Squared Circle, very difficult value. Cat £500	£250
196	½d SG 165 Pale Green. Fresh Unmounted Mint.	£50
197	1d SG 166 lettered JC. Fresh Unmounted Mint. Cat £35+	£20
198	1½d SG 167. 9 AP 84 BEDFORD ROAD BIRKENHEAD Code A CDS. Cat £60	£20
199	1d SG 171(2) Spec K7(2) 14 Dots. Bluish-Lilac superb used DUBLIN DE 5 81 CDS tying to small piece. Good colour of this scarce shade. Hendon Certificate.	£150
200	2/6d SG 178 Lilac lettered HA. Lovely light Registered cancel AP 5 8-. Cat £160	£50
201	5/- SG 180 Rose DB. Lovely unusual LIVERPOOL OC 24 94 Code 28 Double Ring CDS. Cat £250	£80
202	10/- SG 183 Ultramarine lettered GF. Lovely colour, superb SP 7 90 REGISTERED cancel. Cat £525	£200
203	10/- SG 183a Pale Ultramarine AA-AB. Very interesting re-joined Pair, genuine usage, LOMBARD ST. JU 10 86 Late Fee. Very slight repair on AA. Multiples not common. Cat £1,100	£125
204	3d SG 191 lettered AF. Good example with good colour, Mint but a little heavily mounted. Cat £280	£50
205	2d SG 189 lettered FA. Good used & good colour, parts of Liverpool Squared Circle cancels. Cat £80	£20
206	6d SG 194 Rare Block of 4 KP-KQ/LP-LQ. Difficult issue and value, quite good cancel and reasonable colour. Cat £1,100 reflects scarcity.	£250
207	1½d SG 198. Very Fine Mint.	£10
208	1/- SG 214. Good Block of 4, difficult on this issue cancelled by just two GREAT RUSSELL ST W.C. AP 30 02 CDS. Cat £700	£225

FOR MORE QUEEN VICTORIA to KING GEORGE V
See our HIGH VALUES Parts One (List 83) and Two (List 86)

ALL STAMPS LISTED BELOW HAVE BEEN PHOTOGRAPHED
ALL STAMPS ARE WITHOUT DEFECT & FINE USED UNLESS OTHERWISE STATED

SURFACE PRINTED POSTMARKS

209	3d SG 92 Plate 4 lettered ED. Good perf wing margin, London 46 in Diamond roller cancel. Cat £250	£30
210	3d SG 103 Plate 8 lettered SJ. Excellent Whitney Type "H" 497 for Malvern. Cat £60	£20
211	1/- SG 150 Plate 12 MC. Interesting, excellent 657 for Rougham. Difficult. missing corner perf Cat £160	£15
212	½d SG 164 Deep Green. Excellent Whitney Type "B" 915 Wotton-Under-Edge cancel. Cat £22	£10
213	1½d SG 167. Good Foreign Branch cancel. Cat £60	£15
214	1d SG 170 14 Dots. Excellent 938 Croydon. Cat £45	£15
215	2½d SG 190 HB/IB. Lovely vertical Pair, TOWER ST. B.O. NO 11 89 Code B E.C. (London). Cat £40	£20
216	6d on 6d SG 162. Tied by 625 for PORTSMOUTH H.P.O. (Scarce) MR 22 84 Code 1 D. Cat £80	£50
217	QV Jubilee Exhibition 1d SG 166. Lovely, tied to piece by slightly weak First Day 2 JY 90 Crown	£50
218	QV Jubilee Exhibition 1½d SG 167. Superb, tied to piece by excellent First Day 2 JY 90 Crown	£60
219	QV Jubilee Exhibition 2d SG 168. Beautiful, tied to piece by slightly weak First Day 2 JY 90 Crown	£70
220	½d SG 197. Neat S.M.P. 5 12 – Code B CDS.	£10

FORGERY

221	1d Red Imperf Plate 143 MH. Forgery or Treasury Roulette, possibly neither, but roughly cut out with curving scissors? Not regular enough for a roulette cutter, right period of plates for a TR. Still 4M?	£50
222	1d Red Imperf Plate 58 lettered SC. Attractive 4 margin some with appearance of Private Roulette , scratch in left margin, light 110 Dumbarton cancel. Statham P 852.	£40
223	1d Red Archer Perf 14 Plate 104 FF. Interesting forgery, approx P14 , perfs could not have been done by official perforator. Stamp is slightly too wide. Submitted to RPS as Plate 98 but plated by Ken Statham as 104. Matched to an almost 4M Imperf. 226 Cranbrook cancel which is very difficult.	£125
224	1937 3d Dark Colours Propaganda Forgery. Good marginal used copy with indistinct Blue cancel and falskt in Blue on reverse.	£20

OFFICIALS

The following group Officials have been kindly checked for us by Peter Roberts of Wenvoe Ltd who is an acknowledged expert on these issues. As they are mainly low values, they do not warrant a certificate so we are very grateful for his help. Should you wish to contact him for any officials (or GV Seahorses another of his specialities), his web address is: wenvoexpertising.com

225	½d SG 02 Inland Revenue Pale Green. Fresh Unmounted Mint, faint vertical gum creases. Cat £90+	£50
226	1d SG 03 Inland Revenue. Fresh Unmounted Mint.	£6
227	6d SG 04 Inland Revenue. Lovely OLDHAM MR 28 98 Code 2. Cat £140	£70
228	½d SG 013 Inland Revenue. Lovely DE 30 99 CDS	£2
229	2½d SG 014 Inland Revenue. Very Fine Mint. Cat £175	£75
230	½d SG 017 Inland Revenue. Fresh Fine Mint. Cat £15	£10
231	6d SG 018 Inland Revenue. Lovey part small Registered 27 AU 01 tying to piece. Cat £150	£60
232	½d SG 031 Office of Works. Attractive Double Circle JY 22 02 CDS. Cat £150	£60
233	½d SG 041 Army Official. Fresh Unmounted Mint.	£4
234	½d SG 042 Army Official. Fine Mounted Mint.	£4
235	1d SG 043 Army Official. Attractive NO 17 97 CDS.	£3
236	1d SG 043a Army Official. Fresh very lightly hinged Mint showing the foot of "L" missing. Cat £240	£125
237	2½d SG 044 Army Official. Fine Registered SP 15 96 cancel.	£5
238	½d SG 020 Inland Revenue. Unmounted Mint.	£25
239	1d SG 021 Inland Revenue. Unmounted Mint.	£15
240	½d SG 048 Army Official. Fresh Mounted Mint.	£2
241	1d SG 049 Army Official. Lightly Mounted Mint.	£2
242	1d 074 Government Parcels. Very fresh Unmounted Mint.	£75
243	½d SG 0101 Admiralty. Fresh very lightly hinged Mint.	£20
244	1d SG 0102 Admiralty. Unmounted Mint	£15
245	½d SG 0107 Admiralty. Very lightly hinged Mint.	£20
246	1d SG 0108 Admiralty. Fresh lightly Mounted Mint	£20
247	½d SG 041 Variety Spec L36n Army Official. Very lightly hinged Mint with "short L". Cat £60	£50
End of the Wenvoe Section		
249	1d SG 037 Office of Works. Good used copy AP 2 03. Cat £180	£60
250	2½d SG 044 Army Official. Good Mint copy. Cat £50	£30
251	2d SG 070 Government Parcels. Very attractive Pair with DRIFFIELD DE 2 97 CDS's still on paper. One stamp has a possible small thin. Cat £100+	£30
252	1/- SG 072 Government Parcels. Good colour and fine used, difficult stamp. Cat £275	£95
253	1d SG 074 Government Parcels. Good used parcel type cancel. Cat £22	£10
254	2d 076 Government Parcels. Good example with parcel post cancel. Cat £60	£25
255	1d SG 084 Board of Education. Good copy with GRIMSBY JA 1 04 CDS. Cat £45	£25
256	1½d SG 0103 Admiralty Official. Good used, Double Ring CDS , difficult stamp. Cat £150	£70

**ALL STAMPS LISTED BELOW HAVE BEEN PHOTOGRAPHED
ALL STAMPS ARE WITHOUT DEFECT & FINE USED UNLESS OTHERWISE STATED**

FISCALS

257 1d F18 Inland Revenue. Fine Mint centred a little left. Cat £22 £10

TELEGRAPHS

258 1d SG T2 Plate 1. Mint, a few shortish perfs. Cat £30 £10

PERFINS

259 ½d SG 48/49 Plate 20 lettered HQ. Very interesting, with NPB cancel and C & Co Perfin, unusual on this issue and plate. Cat £85 £20

260 1d Plate 188 lettered EF. G.W.R. (Great Western Railway) Perfin with London W30 numeral £10

261 1d Plate 123 lettered DC. B B & Co Perfin. Defective copy. £5

262 1½d Plate 3 lettered SL. B/W & Co Perfin. Nice example, slight perf fault at bottom. Cat £75 £10

263 2d SG 47 Plate 13 lettered PD. Lovely CDS copy and very interesting I & R M Perfin. Cat £30 £10

264 2½d SG 139 Plate 1 White Paper MC.R/F & Co Perfin, heavy London 98 in Diamond. Cat £120 £10

265 1/- SG 163 Plate 13 lettered AI. Good H & L Perfin with LONDON FE 11 82 CDS. Cat £170 £20

266 1d SG 172. B D & R Perfin, Double Ring FE 401 CDS £5

267 10/- SG 183 Ultramarine AG. Lovely, H & B Perfin, with slightly smudged Late Fee cancel. Cat £525 £65

268 1½d SG 420 Block Watermark. Good used with perfect Stationery Office Official Perfin. £10

269 Edward VII ½d SG 215/6. Good GNR (Great Northern Railway) Perfin £15

270 1d SG 172/3. GWR with part LONDON W Code 100 in the Squared Circle JY 12 99 £15

POSTMARKS - GENERAL - ENGLISH

271 1d Red Imperf Plate 164 HL. Superb 4 margin, lovely 35 for Axminster, not often seen on Imperfs. £30

272 1d Red Imperf Unplated lettered QK. Lovely 4 margin copy with 92 for Bolton. £20

273 1d Red Imperf Unplated RD. Brilliant good to huge 4M, part of adj stamp, superb 104 for Brackley. £30

274 1d Red Imperf Plate 168 LH. Lovely looking good to large 4M with 107 for Bradford (Yorks). Cat £55 £25

275 1d Red Imperf Plate 48 lettered TD. Lovely 4 margin, with good 152 for Burton-on-Trent. £15

276 1d Red Imperf Plate 136 LH. 4 margin, part of adjoining stamp below, 250 for Devonport. Cat £50 £20

277 1d Red Imperf lettered SJ. 4 margin with good 279 for Epping. £25

278 1d Red Imperf Plate 102 lettered OB. 4 margin with 290 for Falmouth. £15

279 1d Red Imperf Unplated DF. Lovely 4M, superb Whitney Type "A" 397 for Buckden, extremely scarce. £90

280 1d Red Perf Spec C1 Plate 190 HD. 511 for Market Harborough, centred a little low to left. Cat £40 £15

281 1d Red Imperf Plate 119 MK. Lovely 4 margin, excellent 516 for Marleborough (Wilts) Plate Cat £38 £25

282 1d Red Imperf Plate 145 lettered RI. 4 margin still on piece, mark to left of "I", slightly smudged 559 for Lydney, which is very difficult. Statham P 1880 £50

283 1d Plate 202 lettered HK. Nice tied to piece by reasonable 591 with OLDHAM O DE 15 77 CDS £10

284 1d Red Imperf Plate 108 lettered BF. Lovely 4 margin with 620 for Plymouth (Devon). Cat £45 £20

285 1d Red Imperf Plate 160 SF. Good to very large 4M, part of adj stamp to right. Neat 646 for Rippon. £25

286 1d Red Imperf Plate 63 lettered BB. Attractive 4 margin with both B's blind, left B possibly double with marks below, burr rub NW square with goodish 656 for Wath which is very difficult. Statham P 933 £50

287 1d Red Imperf Unplated RD. Lovely 4 margin tied to piece, excellent 814 for Truro (Cornwall) £15

288 2d Blue Imperf Plate 4 QA-QC. Stamps QB and QC lovely pair, parts of adjoining stamps below, some slight creasing, QA reduced, upside 930 for York & Clitheroe DE 3 1853 receiving. Pair Cat £220 £50

289 1d Red Imperf Unplated LG. Good looking 3M with excellent scarce 932 Escrik, very tiny thin at top. £25

290 1d Red Imperf Unplated LA. Lovely, just 4 margin, tied to piece by two slightly indistinct 945 for Runcorn, with Oldham DE 11 1848 receipt cancel. The 945 is a very scarce on Imperfs. £50

291 1d Red Plate 188 EE. Good example of D92 for Clare, including letters not common on line engraved. £10

292 1d Red Plates 118 EG MIDDLESBOROUGH MY 24 73?CDS and Plate 168 EH MIDDLESBOROUGH MR 13 75 CDS. Unusual neighbouring letterings with similar Circular Date Stamps different dates. £80

293 1d SG 219/220. Tied by superb LISCARD, BIRKENHEAD 3, 8.30 PM JU 14 09 Double Ring CDS £10

LETTER PREFIXES

294 1d Plate 107 lettered DF. Whitney Type "A" B26 for Blagdon (scarce). Excellent cancel. £30

295 1d Perf Unplated lettered BE. Good Whitney Type "A" B66 for Briton Ferry. £30

296 1d SG 172. Excellent Whitney Type "B" D94 for Woodford Bridge. £50

297 1d SG 172. Superb Whitney Type "B" D96 for West Dreyton. £25

298 1d SG 172 16 Dots. Good Whitney Type "B" F24 for Whitland. £40

299 2½d SG 23. Lovely Whitney Type "H" J24 for Greenstreet Kent. £25

300 1d SG 172. Excellent Whitney Type "H"? K26 for Bexhill. £30

POSTMARKS - GUERNSEY, JERSEY, ISLE OF MAN & ISLE of WIGHT

301 1d Red Imperf lettered KI. With margins on 3 sides and excellent 324 for Guernsey £15

302 1d Red Perf Plate 177 lettered RB. 324 for Guernsey, top serif of "B" extends left. Statham P 2045 £90

303 4d SG 94wi Plate 9 Pair RG-RH. Attractive wing margin pair with Inverted Watermarks (difficult on this plate) and lovely 324 Guernsey cancels, one stamp has a perf missing. £120

YOU CAN VIEW THIS LIST ON OUR WEBSITE

www.ericpaul.co.uk

ALL STAMPS LISTED BELOW HAVE BEEN PHOTOGRAPHED
ALL STAMPS ARE WITHOUT DEFECT & FINE USED UNLESS OTHERWISE STATED

POSTMARKS – GUERNSEY, JERSEY, ISLE OF MAN & ISLE OF WIGHT - continued

304	1d Imperf Plate 75 lettered LE. Lovely 4 margin, excellent	409 for Jersey	3/2/3/2	£30
305	1d Imperf Plate 106 Pair lettered SI-SJ. Lovely 4 margin, part of adjoining stamp at right, both cancelled by slightly over-inked	409 for Jersey.	Pinkus. 3/2/4/2	£70
306	1d Red Imperf Plate 118 lettered GK. 4 margin with quite good	407 Isle of Man.	Pinkus 3/2/3/2	£35
307	1d Red Imperf Plate 122 SD. 4M slight lavender tint, excellent	407 Isle of Man.	Thin/repair in NW sq	£20
308	1d Red Perf Spec C10 Plate 59 lettered RE. Well centred with neat	407 Isle of Man	cancel.	£20
309	1d Red Plate 146 lettered TD. -0 19 71 Code D with small part 4 (407) numeral alongside.			£30
310	1d Red Plate 177 lettered GI. Excellent	407 for Isle of Man	cancel.	£15
311	1d SG 172. Excellent	Whitney Type "B" 081 for Castletown Isle of Man.		£30
312	1d Perf Plate 56 FF. Superb	666 Ryde	resembles 999 Paulton. Whitney Type A not listed at Paulton.	£15
313	1d Plate 119 FG. Upright	RYDE FE 4 74 Code E.	Early plates difficult with CDS, colour has run slightly	£25
314	1d Plate 180 lettered HL. Central upright	RYDE MY 1 76 Code E CDS.		£30
315	3d on 3d SG 159 Plate 21 lettered KC. Lovely, with	RYDE 2 JU – Code A Squared Circle.	Cat £160+	£50
316	1d SG 219/220. Tied to piece by	SHANKLIN S? 0 AU 21 10 8PM Isle of Wight	Double Ring CDS.	£5
317	Parcel Post Label. NITON 1 MR 28 ISLE OF WIGHT. Scarce cancel.			£45
318	Parcel Post Label 3d Jubilee on	RYDE, ISLE OF WIGHT (RD) tied by RYDE H P SP 4 96 CDS		£50
319	Parcel Post Label 9d Jubilee on	Bembridge (BEZ) (Under Ryde, Isle of Wight) tied by RYDE Double Ring with BEMBRIDGE JY 12 01 Code B CDS alongside		£60
320	Parcel Post Label 4d, Pair of 2d Edward VII tied by	Ventnor indistinct Double Ring and Madeira Rd NO 12 03 Code A CDS		£50

We have a good stock of Parcel Post labels for the Isle of Wight. We are happy to receive enquiries, send scans or photocopies

POSTMARKS – IRISH including several 1d Red Plates with CDS postmarks

321	2d Imperf Spec ES11ue SG 14 Plate 3 BH.Excellent 4M with very good	Dublin MX.	Difficult. Cat £500	£200
322	1d Imperf Spec B1tf. Good looking 3½ margin with an excellent example of the	Dublin Maltese Cross	with the break in the outer frame, some thinning. Not common. Cat £150+	£30
323	1d Plate 203 lettered TI. BALLINA (probably)	OC 8 79 Code D CDS		£40
324	1d Red Perf Spec C1 Plate 174 PB. Lovely well centred with superb	32 for Ballinasloe.		£35
325	1d Plate 158 lettered CI. BALLYMENA AP 14 74 Code C CDS			£40
326	1d Imperf Spec BS91e Plate 123 lettered CE. Good example of	Lavender Tinted Paper.	Attractive 4 margin, excellent	65 for Belturbet. Cat £275
327	1d Plate 169 SC. BLACKROCK JY 24 76 Code B DUBLIN upright	CDS, few slightly trimmed perfs.		£20
328	1d Plate 204 lettered QA. BOYLE SE 30 78 Code C CDS, centred to left.			£15
329	3d SG 144 Plate 17 Pale Rose lettered EC. Excellent	90 for Cahir.	Cat £80	£30
330	1d Imperf Plate 59 lettered DE. 4 margin with superb	126 for Cavan.	Cat £45	£20
331	1d Imperf Unplated lettered LA. 3 margin with very good	142 for Clonmel.		£10
332	½d SG 48/9 Plate 11 lettered QR. Very good	156 for Cork.	Cat £30	£10
333	3d SG 102 Plate 5 lettered SI. Perf wing margin with	157 for Queenstown, few short perfs.	Cat £70	£20
334	1d Plate 213 lettered LE. Upright	DOWN NO 21 79 Code F CDS, slight creasing on reverse and pinhole caused through the 1, probably a faulty canceller.		£15
335	1d Plate 80 CE. Upright	DROGHEADA JA 15 65 Code C CDS, 3 or 4 slightly trimmed perfs SW sq.		£15
336	1d Imperf lettered SL. Some margins, good	181 for Dromore (Down)/ Dromod.		£15
337	1d Red Plate 125 lettered SJ. DUNFANAGHY OC 9 72 CDS, centred a little right.			£30
338	1d Perf Unplated lettered SK. Well centred, cancelled by reasonable large	200 for Dunmanway.		£15
339	1d Plate 184 QI. ENNIS MY 31 79 Code D CDS. Centred to right, slightly rounded top corners.			£15
340	1d Plate 198 lettered HG. Well centred and lovely	KILKENNY OC 15 73 Code D CDS		£35
341	1d Perf Spec C10 lettered HK. Well centred, good	299 for Larne.		£15
342	1d Plate 206 lettered FJ. Well centred with good	LURGAN JU 7 78 Code E CDS		£35
343	½d SG 187. Cancelled by excellent large	325 for Maynooth/Maghera.		£20
344	1d Imperf Plate 125 lettered SD. Lovely 4 margin, excellent	334 for Monaghan, slight Lavender Tint.		£40
345	1d Imperf Plate 70 lettered OE. 4 margin with	Blue 338 and Blue straight line Late Mail possibly indicating use on Railway. Mountmellick is known to have used Blue ink. Rare Combination.		£150
346	4d SG 66/66a. Quite good	388 for Rathdrum.	Cat £150	£30
347	9d SG 110 Plate 4 lettered JH. Attractive looking, good	410 for Sligo, Imperf margin at right.	Cat £325	£40
348	1/- SG 72. Light small	412 for Strabane, small grease spot.	Cat £350	£30
349	1d Perf Spec C10 lettered HC. Well centred, reasonable	428 for Thomastown.		£25
350	3d SG 143 Plate 12 lettered EI. Attractive perf wing margin with large	429 for Thurles.	Cat £80	£30
351	3d SG 103 Plates 4 to 10. Good set including very difficult	Plate 4 (Cat £300), mostly 62 for Belfast, one with 272 Kilarney, 2 or 3 might need upgrading, but plates 4, 6, 9 and 10 all good. Total Cat £790		£200
352	2/6d SG 179 Deep Lilac HC. Superb	KILMALLOCK (Limerick) NO 7 90 CDS (unusual).	Cat £225+	£80
353	½d SG 213. Excellent	DUBLIN JU 30 00 Code N2 CDS		£5

**ALL STAMPS LISTED BELOW HAVE BEEN PHOTOGRAPHED
ALL STAMPS ARE WITHOUT DEFECT & FINE USED UNLESS OTHERWISE STATED**

POSTMARKS – LONDON

354	1d Red Imperf Plate 159 GC. 4 margin close below "G" square, excellent	25 in Diamond, small thin.	£15
355	1d Red Imperf lettered FA. Lovely 4 margin, cancelled by typical	London District 41 in Diamond.	£30
356	1d Red Perf Spec C8 Plate 8 lettered EH. Beautiful well centred with superb	41 in Diamond.	£20
357	1d Red Imperf SF. Almost 4M, close to touching near "F" sq, typical	44 in Diamond scarce on Imperf.	£20
358	1d Red Perf Spec C1 Plate 172 lettered PH. Well centred with difficult upright	44 in Diamond.	£25
359	1d Red Imperf Plate 107 lettered NB. 3 margin with	London District 46 in Roller cancel.	
	Very scarce postmark on Imperf (which we have not seen before) on a particularly difficult plate.		£100
360	1d Red Perf Plate 194 Spec C1 Deep Orange Brown lettered NH. Beautiful well centred with lovely	49 London District Roller.	£50
361	1d Red Imperf KC. 4M with superb	51 in Diamond, very minor corner crease not visible from front.	£80
362	1d Red Imperf Plate 151 lettered NA. Beautiful good to huge 4 margin, part of adjoining stamp at right and bit of inscription	£1-0-0 per visible, good 72 and AP 1 53 CDS	£60
363	1d Red Imperf Plate 157 RI. Attractive 4M tied to piece	73 in circle with 8M JY 21 53 CDS alongside.	£30
364	1d Red Imperf Plate 164 BC. Brilliant 4M tied to piece by	74 in circle with 8NT AU 53 CDS alongside	£50
365	1d Red Perf Plate 55 Pair ED-EE. Charles Rideout 1 with	HS LONDON FE 13 58 Early use?	£25
366	1½d SG 52 Plate 1 lettered BJ. Excellent	Dubus Type 26 Parmenter Rarity G/F unusual on this value, slight fault at base.	£25
367	5/- SG 181 GL. Superb, with excellent	LONDON SP 5 90 Code E Double Ring experimental cancel.	£150

POSTMARKS – LONDON -SUBURBAN and CHIEF OFFICE

368	1d Plate 122 ED. Well centred, stunning almost upright	Black 6 for Edgeware, quite scarce on 1d Plates	£150
369	1d Perf Spec C10 Plate 48 lettered AF. Well centred, superb	Blue/Black 8 for Tottenham. Black cancel rated "H", Blue is Unlisted.	£125
370	1d Perf Spec C8 Plate 28? JI. Well centred, slightly indistinct but	Rare Blue 13 Type A for Stratford. Rated "H" perf not known on cover, few missing perfs at top.	£100
371	1d Perf Spec C1 Plate 202 lettered KE. Beautiful well centred with superb	Blue 20 for Greenwich.	£60
372	1d Perf Unplated BG. Well centred, cancelled by	Black 21 for Woolwich (quite good strike).	£100
373	1d Imperf Plate 113 IC. Quite good	Blue 27 Type A Clapham. Rated "H". Slight thin spots in places	£100
374	1d Imperf Unplated lettered PI. Good 4 margin with	Blue 28 Type A for Tooting, slight defects.	£80
375	1d Perf Spec C1 SG 17 GD. Good	39 Type B Hammersmith. Rated "H" Rarity, horiztl filing crease.	£75
376	1d Imperf Unplated lettered KD. 4 margin with	superb upright Black 41 for Brentford.	£80
377	1d Plate 85 SD. Excellent almost upright	Black 41 for Brentford. Plates often scarcer than Imperfs.	£80
378	1d Perf Blued Paper RG. Well centred, cancelled by slightly over inked	54 for Norwood. Rated "H"	£150
379	1d Plate 91 lettered SD. Lovely upright	56 for Isleworth. Rated "G". Stamp centred a little low.	£75
380	1d Plate 90 KE. Excellent	62 for Harrow. Rated "H" in Black Type D2. Very difficult. Stamp centred low	£125
381	1d Imperf Plate 102 lettered JF. Neat 4 margin with upright	London Chief Office 55 Type A cancel.	£35
382	3d SG 92 Plate 4 lettered GF. Unusual surface printed with good upright	70 Type 2 East Central District. Stamp somewhat aged but scarce with this cancel.	£125
383	2d SG 19 Plate 4 lettered KD. Excellent	London Chief Office 73 Type 4B cancel.	£75
384	1d Perf Unplated IL. Cancelled by superb	95 Type 2 East Central District, centred a little low to right.	£100
385	1d Perf Unplated FF. Well centred,	97 Type 2 East Central District cancel, few missing perfs at left.	£100
386	1d Plate LE. Cancelled by slightly indistinct	Type A 42B Stanmore which is difficult, centred high right	£50

POSTMARKS – MANUSCRIPTS CANCELS, IMPERF, PERF & PLATES

387	1d Red Perf Spec C10 Plate 34 JD. Manuscript cancel. Variety "J" defective but with long upper serif.	£20
388	1d Plate 99 lettered AA. Well centred, lightly cancelled numeral with strange ink cross manuscript.	£20
389	1d Plate 101 lettered JK. Manuscript black pen cancelling Queen's profile as numeral cancel too weak.	£15
390	1d Plate 138 lettered RH. Lovely well centred copy with superb X.	£25
391	1d Plate DC. Well centred, apparently with 5 or 6 inked manuscripts, somewhat aged, some defects.	£10

POSTMARKS – TOO LATE, LATE FEES, MORE TO PAY and UDC

392	6d on 6d SG 162 Plate 18 lettered FG. CL/L Perfin and Lombard St Late Fee. Cat £150	£25	
393	1d Plate 72 FF. Tied to piece 78 Duplex and good	TOO LATE CB JA 15 67 LONDON CDS alongside.	£20
394	½d GV on piece addressed to Gen.G.L.Marshall with	1d Postage Due overlapping cancel 8 FE 26, with lovely ABOVE 2oz 1d MORE TO PAY P with handwritten initials alongside. Attractive piece.	£25
395	1d Plate 147 lettered KH-KI. Good pair with almost complete	DUBLIN JA 15 72 LATE FEE CDS.	£50
396	1d Plate 195 lettered HK. LI LONDON 16 MY 77 Tombstone	Late Fee cancel.	£30
397	1d Plate 197 lettered KB. LI LONDON JY 28 77 Tombstone	Late Fee cancel.	£35
398	1d Plate 199 lettered OB. LI LONDON 1 JU 77 Tombstone	Late Fee cancel.	£40
399	1d Imperf Plate 16 SG. 4 margin tied to piece by good	Maltese Cross with PAULTON UDC alongside.	£50

DISCOUNTS (on all items except high values and specials)

Purchase over £100	Deduct 10%
Purchase over £150	Deduct 15%
Purchase over £250	Deduct 20%

Discounts are cumulative over the life of the list which will be not less than 12 months

ALL STAMPS LISTED BELOW HAVE BEEN PHOTOGRAPHED
ALL STAMPS ARE WITHOUT DEFECT & FINE USED UNLESS OTHERWISE STATED

NEWSPAPER BRANCH

400	1d Plate 145 lettered AJ and BJ. A separated pair both cancelled with H LONDON 7 OC 73 CDS's	£50
401	1d Plate 146 lettered OB. Slightly indistinct large – 5 – S.W. CDS	£20
402	1d Plate 146 lettered II. Parts of two light N.W. 29 12 77 CDS's	£20
403	1d Plate 171 lettered SH. Part CX (Charing Cross) 26 – CDS	£20
404	1d Plate 184 lettered RJ. F.A. – 1 – 77 CDS	£20
405	1d Plate 186 lettered DA. Neat EDIN NPB CDS	£20
406	1d Plate 191 lettered IK. Part EDINBURGH NPB AP 3 77	£30
407	1d Plate 199 lettered NA/OA. Neat vertical Pair each with EDIN JA 4 78 Code K CDS's	£80
408	1d Plate 204 lettered PG. Quite good GLASGOW NPB AP 4 79	£20

PARCEL POST LABELS (see also Isle of Wight section)

409	QV Jubilee 1½d, 3d and 6d being 10½d for 10d EPINGHAM DE 22 94 Code C (under Norwich) stamps cancelled by Norwich Double Ring.	£75
410	1902-10 De La Rue 4d SG 236. Tied by HAVANT MR 5 07 Code O M.O. & S.B, label a little creased.	£40
411	1911 Edward VII 4d SG 278 or 286. Tied by Havant rubber with DENVILLE NO 28 12 HAVANT CDS.	£50
412	1911 4d SG 286 Spec M27(1) Perf 15 x 14. Tied to label by CWMAVON DE 11 12 CDS (under Port Talbot). Difficult, stamp straight at edge left.	£50
413	GV Cypher 3d, 4d & 1/-. Nicely tied but not easy to identify 20 NO 16.	£30
414	GV Cypher 3d, 4d & 1/-. Tied to label by four good ARMY POST OFFICE 10 JU 15 + R.A. 1 (Royal Artillery?). Label a little creased but interesting.	£50
415	GV Cypher 1/- & 4d. Tied to label by 3 good ARMY POST OFFICE 28 AP 15 Code R4. Very nice.	£60
416	GV Cypher 4d & 1/-. Tied by ARMY POST OFFICE 17 AP 18 Code S.48 During First World War.	£50
417	GV Cypher 1/-. Tied to label by two quite good FIELD POST OFFICE 30 JY 16 Code + TA3	£50

POSTMARKS – PAQUEBOTS

418	1d SG 172 16 Dots. Lovely, with good PORT SAID X1 OCT Double Ring CDS	£10
419	½d GV Mackennal. Attractive, Double Ring ESTACA----19 ABR 1-S----CDS. Portuguese or Brazilian?	£15
420	½d GV Mackennal. Attractive, with rectangular cancel ADESC- possibly Portuguese or Brazilian?	£15
421	½d & 1d GV. Excellent piece with PAQUEBOT FE 27 2-3PM PORT SAID CDS	£10
422	2d GV. Lovely piece with PAQUEBOT 17 MR 21 3-PM PORT SAID CDS	£15
423	1½d GV PUC. Tied to piece by quite good PAQUEBOT 1938? Code 9 PORT SAID	£15
424	1d GV. Good copy tied to piece by N A P O L I 14.5.14 Code 10 PORTO CDS	£20
425	2d GV. Interesting -HEPCT – 14 31 PORT SAID	£15
426	1d GV Mackennal. Interesting copy which appears to have a largish red printing smudge underneath the cancel "Posted at Sea Received -0 NO 11 Liverpool". Unusual.	£20
427	1d GV Mackennal. Neat example tied to piece by N A P O L I PORTO 23.3.12	£15
428	1d GV Mackennal. Good copy tied to piece by oblong PAQUEBOT with PORT-TAUFIQ 29.X.11. 8AM	£25
429	½d GV Mackennal. Attractive Vertical Pair both with GREENOCK ARDRISHAIG COLUMBA (PACKET) AU 5 12 Double Ring CDS's.	£40
430	½d GV Mackennal. Prepaid postcard with additional ½d both tied by PAQUEBOT TOULON SUR MER VAR MA13 Code 3 Hooded Circles.	£50
431	½d GV Mackennal. Neat Pair upside down tied to piece by two PAQUEBOT SOUTHMAPTON POSTED AT SEA RECEIVED 29 SP 13	£20
432	1d GV Mackennal. Good copy tied to large piece by RIO DE JANERIO PAQUEBOT 3A SECCAO with Blue POSTED ON THE HIGH SEAS 22 JUN 1913 alongside.	£40
433	1d GV Mackennal. Good copy tied to piece by large numeral with BOSTON AUG 6 1 PM MASS with 1912 separate stamp between CDS and stamp.	£25
434	1½d GV Photogravure. Tied to piece by quite good PAQUEBOT 7AM JY 1 35 MALTA	£25
435	1½d GV Photogravure. Interesting copy tied to piece with PLYMOUTH 26 AUG 1936 11PM DEVON over Blue POSTED ON THE HIGH SEAS T.S.S. ALMEDA STAR 26 AUG 1936	£25

PENNY POST

436	1d Red Imperf Plate 23 IB. Attractive 4M, multiple break in NE square, vague marks in SW and SE square, neat Maltese Cross and Blue/Black BRIGHOUSE PENNY POST. If date HALIFAX AU 17 1841 is correct, this stamp does not belong, as Plate 23 was not put to press until 20 January 1842.	£30
437	1d Imperf Plate 41 SB. Neat 4 margin, worn plate, clear 628 for Preston and PENNY POST in Black.	£40

POSTMARKS – RAILWAY (see also Perfins)

438	1d Plate 92 lettered RC. Well centred and lightly cancelled by the Railway Sorting Carriage Star.	£25
439	1d Plate 150 lettered RA. Beautiful HIGHLAND NIGHT MAIL SORTING CARRIAGE for MY 10 74 CDS, very unusual. Few short perfs at top.	£20
440	1d Plate 172 lettered NH. Well centred with excellent 023 for Farnboro' Station.	£10
441	1d Plate 206 TK. Excellent large part E94, part GLOUCESTER STATION CDS, slight trimmed perfs.	£15
442	3d SG 143 Plate 17 JA. Tied by excellent 312 with GLOUCESTER STATION AU 75 18 75 CDS	£45

ALL STAMPS LISTED BELOW HAVE BEEN PHOTOGRAPHED
ALL STAMPS ARE WITHOUT DEFECT & FINE USED UNLESS OTHERWISE STATED

POSTMARKS – RAILWAY (see also Perfins) - continued

443	2/6d SG 178 lettered BC. CONTINENTAL NIGHT MAIL C.S.(CANNON STREET) AU 18 99 Double Ring CDS. Nice looking despite faint crease which is difficult to see. Stamp cat £160	£35
444	£1 SG 212 Green RD. Attractive looking, possible boxed Railway "C G P overstruck by BLACKHEATH VILLAGE 16 SP 98? CDS . Pale area to right where crayon mark removal has taken place. Cat £800	£195
445	1d Plate 150 lettered FA. GALWAY AU 1 74 Code B SORTING TENDER , slightly indistinct.	£30
446	1d Plate 174 lettered AE. Possible CARLISLE? MA 20 79 SORTING TENDER	£30
447	1d Plate 190 OD. WALES SORTING TENDER AU 30 79 Code B , centred to right still on paper.	£30
448	1d Red Plate 205 lettered QB. Superb HIGHLAND SORTING CARRIAGE NIGHT MAIL AP 26 79 Code D . Very slightly trimmed perfs at right towards NE square.	£40
449	1d Plate 191 lettered PC. BANGOR and CREWE T.P.O. from East or West OC 3 1879 usually accompanied by down or up but does not seem to have this or space for it.	£20
450	1d Plate 207 lettered IL. FARNBOROUGH STATION JY 29 79 Code B	£45
451	1d SG 172/3. CARSTAIRS (?) JUNCTION DE 28 96(?) Code A Double Ring CDS, just a little aged.	£15
452	½d SG 197 Jubilee LEWES STATION OFFICE AP 7 94 CDS and part Squared Circle? or numeral?	£15
453	1d Lilac SG 172/3. LINCOLN DE 17 00 8.15 PM S.T. Squared Circle still on paper.	£15
454	½d SG 197 Jubilee. Virtually complete ST LEONARDS ON SEA STATION OFFICE FE 17 00 1.45 PM CDS still on piece. Some trimmed perfs.	£10
455	½d SG 197 Jubilee. Neat part RUGBY STATION DE 11 -- Code L CDS	£10
456	½d SG 197 Jubilee. Quite good SWANLEY JUNCTION NO 22 99 8.5 PM Squared Circle. Still on piece, unfortunately trimmed perfs.	£15
457	½d SG 197 Jubilee. RED HILL STA OFF OC 22 88 Code C CDS . Partly on paper, faint horiz crease.	£10
458	1d Lilac SG 172/3. Good LEWES STATION OFFICE NO 27 89 Code N squared circle, partly on paper.	£15
459	Edward VII 1d SG 219/220. Tied to piece, full MIDDLETON JUNCTION NO 4 05 4 PM CDS . Unusual	£25
460	1d Lilac SG 172. Tied to piece by CHESTER STATION OFFICE FE 13 97 Code N Squared Circle.	£15
461	1d Plate 172 HJ. HIGHd SORTING CARRIAGE NIGHT MAIL JA 24 77 U . Few slightly trimmed perfs.	£25
462	2½d SG 201 Jubilee. Large part CONTINENTAL NIGHT MAIL OC 9 00 CDS	£10
463	1d Lilac SG 172/3. Neat central CONTINENTAL NIGHTMAIL OC 20 89 CDS	£15
464	1d Lilac. NORTH of SCOTLAND SORTING CARRIAGE OC 21 95 Code B CDS , blunt corner perf	£15
465	1d Lilac SG 172. Neat SOUTH WALES ST NIGHT UP SP 13 95 CDS , surface is a little rubbed.	£15
466	1d Lilac. Interesting Perfin, seems to be G S W R with part of oval CDS " OWN NIGHT " MR 23 97	£15
467	1d Lilac SG 172. LISMORE R.S.O. T.P.O.(?) 4.30 P.M. JA 30 CDS	£15
468	GVI 2d Dark Colours . Tied to piece by excellent UP SPECIAL G T.P.O. 31 JA 38	£15
469	GV 1d . Tied to piece by excellent SOUTH WALES T.P.O. NIGHT MAIL EAST 3 AU 25 CDS	£20
470	1d SG 419 . Tied to piece by superb LONDON HOLYHEAD T.P.O. DAY UP 31 MR 33 CDS	£20
471	GV ½d SG 418 . Tied by good HIGHLAND T.P.O. UP SOUTHERN SECTION 15 MR 33 Double Ring	£25
472	GV 1d Cypher . Tied to piece by excellent EXETER & TORRINGTON S.C. UP 13 AU 16 CDS	£15
473	GV ½d SG 418 . Lovely piece with stamp tied by ABERYSTWYTH – SHREWSBURY S.C. 18 MR 33 with another alongside.	£25
474	½d SG 213 Jubilee. Tied to piece by excellent IPSWICH SORTING TENDER FE 15 02 Code A	£20
475	1d Plate 137 lettered RG. Superb SHREWSBURY & TAMWORTH T.P.O. NO 3 75 Code A CDS	£50

REGISTERED CANCELS

476	1½d SG 51/2 Plate 3 lettered OH. Interesting postmark which is R (registered) 4 . Cat £75	£25
477	1d SG 40 & 6d SG 70. Attractive piece, each stamp tied by 498 numeral with superb Red MANCHESTER REGISTERED OC 18 58 Code K CDS . Cat £132	£30
478	2½d SG 141 Plate 15 NJ/NI. Good Pair with two excellent London R9 Registered cancels. Cat £160	£30
479	3d on 3d SG 159 Plate 21 lettered FK. Lovely, tied to piece by superb REGISTERED 10 NO 83 EXCHANGE LIVERPOOL . Cat £160	£60
480	3d on 3d SG 159 Plate 21 BF. Good REGISTERED 11 DE 9- Code R BRAFORD YORKS . Cat £160	£40
481	6d on 6d SG 162 Plate 18 lettered KE. Fine used with clear part Red REGISTERED cancel. Cat £150	£30
482	2d SG 168a. Superb Blue REGISTERED 6 SP 20 83 GLASGOW Double Ring CDS. Cat £120+	£50
483	5/- SG 130 Plate 4 CG. Good example of this difficult value with R8 Registered cancel. Cat £4,000	£575

SINGLE CANCELS – AGAINST REGULATIONS

484	1d Red Imperf HG-HH. Pair, margins all round, single MX, quite scarce, faint horizontal filing crease.	£60
485	1d Red Imperf FA-FB. Lovely 4M pair both with "E" Flaw, single indistinct but readable 69 for Bicester .	£75
486	1d Red Imperf Plate 106 Strip of 6 FE-FJ. Good strip, FE, FF, FH and FJ show lowest portion of left side line recut, margins nearly all round. Four (should be six) 545 Newcastle Upon Tyne .	£130
487	2d Blue Imperf Plate 3 Pair NG-NH. With horiz G/L thro value & SE sq (NH), vertical G/L (2) in NE & SE sq's (NG), mark to left of base of NW sq, single 569 North Allerton . Margins just touched at base.	£50
488	2d Perf SG 35 Spec F7 Plate 6 BK-BL. Good Pair in Deep Blue shade , single 434 for Lampeter (Card. Wales) against regulations. BK lower right serif of "K" extends right, one pulled perf. Cat £140+	£100

This section continues overleaf

ALL STAMPS LISTED BELOW HAVE BEEN PHOTOGRAPHED
ALL STAMPS ARE WITHOUT DEFECT & FINE USED UNLESS OTHERWISE STATED

SINGLE CANCELS – AGAINST REGULATIONS - continued

489	1d Red Imperf Plate 88 strip of 4 FI-FL. Margins all round, Two Scottish 15 for Ardrossan , vertical crease through FK, scarce multiple on this plate, would make a good pair & single.	£70
490	1d Red Imperf Plate 43 strip of 7 lettered FA-FG. Excellent strip with margins all round except just touched above FD, cancelled by parts of Five Scottish 113 for Dunfermline .	£130
491	1d Red Imperf Plate 88 Block of 4 lettered BK-BL/CK-CL. Attractive with good to large margins all round. BL – Re-entry with marks in lower margin and in upper squares and inscriptions, cancelled by Two single Edinburgh 131 numerals . Faint diagonal crease across BK/BL just visible. Cat £320	£140
492	1d Red Imperf Plate 81 Strip of 4 CA-CD. Attractive, margins all round with Three 173's for Hamilton	£60
493	1d Red Imperf Plate 170 strip of 4 lettered GB-GE. Attractive, margins all round, cancelled by Two quite good 339 Scottish numerals for Wick . Difficult plate especially in multiples.	£150
494	1d Red Imperf Plate 157 lettered DI-DJ. Very attractive Pair with good to large margins, with single indistinct Irish cancel. Faintest of small creases near NE of DJ.	£60
495	2d SG 23 Plate 4 lettered EE-EF. Interesting Pair with single strike of the Scottish 11 for Annan , centred slightly low and EE has a vertical crease. Cat £450	£100

POSTMARKS - SCOTTISH

496	1d Red Imperf Plate 49 Deep Red Brown LF. Attractive 4 margin, difficult plate, lovely 2 for Aberfeldy .	£30
497	1d Red Imperf Plate 82 lettered DH. 4 margin with excellent 4 for Aboyne .	£20
498	1d Red Imperf Plate 150 lettered ID. Attractive 4 margin with excellent 7 for Alloa .	£20
499	1d Red Imperf Plate 96 lettered BB. Very nice 4 margin with superb 11 for Annan .	£20
500	2d Perf SG 19 Plate 4 lettered DB. Lovely well centred, superb 11 for Annan . Cat £100	£30
501	1d Red Imperf Plate 99 lettered GH. Superb good to very large 4 margin, excellent 13 for Arbroath .	£30
502	1d Red Imperf Plate 70 Strip of 4 HH-HK. Attractive Four 40's for Beith , margins nearly all round	£60
503	1d Perf Spec C1 Plate 183 lettered CB. Well centred, superb 79 for Comrie (Perthshire) .	£30
504	1d Red Imperf Plate 61 lettered DF. Attractive 4 margin with 125 for Dunnett .	£20
505	1d Red Imperf lettered NF. Excellent 4 margin with superb 139 for Falkirk .	£15
506	1d Red Imperf Plate 122 KK. 4 margin, close in places, goodish 146 for Fortrose . Missing Imprimatur	£20
507	1d Red Perf SG 18 Spec C1 PI 184 RL. Well centred, slightly indistinct 166 Grantown , one short perf.	£25
508	1d Red Imperf Plate 88 SC. Neat 4 margin, superb upright Blue 185 Invergordon . Difficult combination	£60
509	1d Red Imperf lettered JB. 4 margin with excellent upright 217 for Largs , not common on Imperfs.	£20
510	1d Red Imperf Plate 63 MB-MC. Fascinating strip of 3, margins all round, just touching below MD. Two 232's for Lochgilphead one of which is upside down. Very unusual.	£50
511	1d Red Imperf Plate 105 FH. Attractive 4 margin, excellent 258 for Morvern (I have not seen before)	£80
512	1d Red Imperf Plate 78 RA-RB. Good pair, worn plate, margins all round, 325 Tobermory (Isle of Mull)	£50
513	1d Red Perf Spec C1 Plate 196 lettered PE. Excellent 335 for Watten, a small village in Caithness variety "P" blind with mark to right (slightly double?), centred a little high but not a common cancel.	£40
514	1d Red Imperf Plate 55 lettered QG. Superb 4 margin with excellent 344 for Lasswade .	£25
515	1d Red Plate 130 lettered TF. Superb 359 for Drem . Unusual cancel. One short perf at top.	£10
516	1d Red Perf Spec C1 Plate 171 State 1 lettered RB. Well centred, excellent 363 for Liberton (Midl) .	£30
517	1d Red Perf Spec C8 Plate 32 GF. Attractive part Madeleine Smith 159 GLASGOW –U 1856 A	£15
518	1d Red Perf SG 33 Orange Brown Spec C8 Plate 35 CL. Well centred, superb Leith 221 in Black	£40
519	1d Red Perf Spec C8 Plate 40 HF. Superb well centred, brilliant Leith 221 Experimental in Black .	£25
520	1d Red Plate 136 lettered HK. Difficult plate tied to piece by 298 for Rothsay .	£10
521	1d Red Perf Spec C10 Plate 66 MA. Excellent LINLITHGOW AU 9 1861(?) CDS , centred little to left.	£15
522	2d Blue Perf SG 35 Plate 6 SI. Tied to piece by Dundee Experimental Duplex with MR 6 1858 D CDS	£35
523	1d Red Perf Spec C10 Plate 52 LK. Marks round "L" in SW sq, tied to piece by Edinburgh 131 Roller	£15
524	2d Blue Perf SG 35 Plate 6 EI. Lovely, tied to piece by excellent Edinburgh 131 Roller . Cat £70	£35
525	1d Red Plate 190 lettered AI. Lovely tied to piece by difficult Dundee Dotted Circle and 114 numeral .	£15
526	1d Red Plate 166 LC. Dotted Circle 12 0 EDINBURGH MY 9 73 described on reverse as A II Type .	£15
527	1d Red Plate 174 lettered KE. Attractive EDINBURGH JA – 77 Dotted Circle .	£10
528	1d Red Plate 191 BJ. Excellent, tied to piece by at least Two EDINBURGH OC 1 77 Dotted Circles .	£20
529	1d Red Plate 206 KD. Lovely, tied to piece by excellent EDINBURGH JA 30 78 Dotted Circle .	£20
530	1d Red Plate 78 lettered AL. Tied to piece by brilliant PEEBLES X OC 26 1864 CDS , with similar cancel on flap, stamp has a faint horizontal filing crease as usual with this cancel.	£20
531	1 Red Plate 101 LJ/KJ. Pair as singles, tied by slightly indistinct PORTOBELLO MR 29 1859 CDS's	£30
532	3d SG 103 Plate 6 LH wing margin, small GLASGOW ROYAL EXCHANGE AU 5 71 CDS . Cat £70+	£30
533	2/6d SG 178 lettered MA. Excellent GLASGOW 3 E SP 25 90 NPB Double Ring CDS , some creasing not unusual on Newspapers but is an unusual value with this cancel. Cat £160	£30
534	½d SG 217/218. Tied to piece by superb SOUTH EASTERN D.O. GLASGOW 8pm DE 6 10 CDS	£10

**PLEASE REMEMBER THAT FOR MULTIPLE PURCHASES
WE GIVE A DISCOUNT**

ALL STAMPS LISTED BELOW HAVE BEEN PHOTOGRAPHED
ALL STAMPS ARE WITHOUT DEFECT & FINE USED UNLESS OTHERWISE STATED

SCOTS LOCAL CANCELLATIONS

535	1d Perf Spec C 4 Plate 4 lettered NJ. Well centred with single Type 1 COWCAD (Dens)(Lanark) tied to piece. Difficult. Scarcity Code "F"	£70
536	1d Perf Spec C8 letteredTA. Well centred, single Type III STRATHBLANE tied to piece. Scarcity "E"	£80
537	1d Perf lettered AJ. Small part Type III ROSNEATH , trimmed perfs. Scarcity Code "E"	£20
538	1d Perf Spec C10 Plate 46 lettered CJ-CK. Well centred Pair, quite good Type IV ONICH OINC(H) Inverness in Black which is very difficult almost complete. Scarcity Code "F"	£70
539	1d Perf Spec C10 Plate 45 QI.Full Type V St ROLLOX (Glasgow) Rare Plate centred high.Scarcity "B"	£80
540	1d Perf Spec C10 lettered OD. Attractive, tied to piece by large part Type VII DUKE ST LEITH .	£15
541	1d Perf Spec C1 Plate 202 CC. Well centred, tied by Type VII DUKE STREET . Scarcity "A"	£25
542	1d Perf Spec C8 Plate 36 lettered FF. Well centred with excellent Type VIII RUE END STREET (Greenock) in Black, full cancel tied to piece. Scarcity Code "D". <i>Not seen by us before</i>	£70
543	1d Perf Spec C8 Plate 43 lettered QH. Quite well centred and cancelled by large part Type VIII (GLE) NBARR (Argyll), slight cut of 2 perfs at NE. Scarcity Code "G"	£80
544	1d Perf lettered JG. Well centred with quite good Type VIII BLACKHALL STREET (Greenock) in Black. Scarcity Code "G"	£80
545	1d Perf Spec C10 Plate 47 HB. Well centred, Type IX (LHAN) BRYDE , pinhole. Scarcity Code "E"	£45
546	2d SG 35 Plate 6 lettered LC, LD LE...A trio of used singles together with several good Type X PITT STREET (Edinburgh) cancels, stamps centred to left but cancel not common on this value.	£80
547	1d Perf Spec C1 Plate 194 lettered PD. Well centred with two Type XVI GALLOWGATE W.O. cancels in Black making the whole name. Scarcity Code "D", Burr rub over "GE" of POSTAGE.	£60
548	1d Perf Spec C1 Plate R1 lettered AL. Tied to piece by excellent Type XVIII CASTLE STREET , well centred Missing Imprimatur. Scarcity Code "A"	£30
549	1d Perf Spec C1. Nice, centred low to right, tied to piece by excellent Type XVIII QUEEN STREET	£10
550	1d Perf 14 Spec C8 Plate 28 lettered OK. Well centred, tied to piece by quite good Type XVIII NICHOLSON STREET . Scarcity Code "A", missing corner perf.	£15

SHIPS/MARITIME (see also Paquebots)

551	6d SG 147 Plate 16 lettered MK. Central CAPE PACKET JU 6 1878 PLYMOUTH CDS . Scarce unusual cancel. Slightly trimmed perfs on two sides.	£85
-----	---	-----

SIDEWAYS DUPLEX CANCELLATIONS

552	1d Perf Unplated M-. Type VIII ABINGDON NO 7 60 Code C , centred low to right. Scarcity Code "B".	£15
553	1d Perf Unplated CI. Well centred tied by Type III BRADFORD AU 27 1857 Code I ,Scarcity Code "D".	£10
554	1d Perf Unplated JE. Type Vb BRISTOL SP 10 1859 Code F , 1st Recut (per Barton)? Code "D"	£10
555	1d Perf Unplated NI. Original Type Vb CHESTER MAY 4 58 Code N? Scarcity Code "D"	£10
556	1d Perf Unplated RC. Original Type II GATESHEAD AU 2 185- Code C . Scarcity Code "C"	£10
557	1d Perf MH. Type II "B" Recut HUDDERSFIELD AP 18 1859 Code J . Scarcity Code "C"	£15
558	1d Perf Spec C10 Plate 42 Strip of 3 HC-HE. Attractive, several HULL AU 21 1858 , some faults.	£10
559	1d Perf Spec C8 PI 44 KG. Superb Type II 498 MANCHESTER FE 9 1857 S . Scarcity Code "D".	£15
560	1d Perf SG18 C1 PI 178 Yellow Brown T.J.Part MANCHESTER S/W , centred low to right.Cat £50	£20
561	1d Imperf Unplated lettered TH. 3 margin with good strike of Type II 620 PLYMOUTH (Devon) used between 22.1.55/1.2.58, not often seen and late use of Alpha I	£20
562	1d Perf SG 21 Spec C4 Plate 4 lettered KI. Attractive, well centred, 918 for Worcester . Cat £65	£25
563	1d Perf Spec C8 Plate 34 lettered KD. Lovely, well centred, tied to piece by excellent Type II 177 CHELTENHAM SP 15 1856 & --DINGTON Undated Circle on reverse. Scarcity Code "D"	£25

SPOON CANCELLATIONS

564	1d Imperf Plate 165 DA. Almost 4M close to touching NE sq.Superb Type A HULL Code B 4 FE 1854	£125
565	1d SG 17 Spec C1 Plate 162 QG-QH/RG-RH. Superb Block of 4, RG in State 2 (strong right sideline with TRL right margin).Cancelled by 2 Type "A" HULL Spoon JY 5 1854 Time Code "E" . Cat £500+	£400
566	1d Perf Spec C9 Plate 47 lettered PH. Tied to piece by lovely LEAMINGTON AP 14 1857 Code E	£60
567	1d Imperf Plate 167 lettered EA. 3 margin tied to piece by Type A 15 LIVERPOOL Spoon for 1854 .	£80
568	1d Perf Plate 33 Spec C8 QK. Very fine used, cancelled by the difficult Liverpool Spoon JU 1856	£50
569	1d Embossed. Type C Recut MANCHESTER (Date not readable) Code Y	£20
570	1d Perf lettered KA. Tied to piece by Type D4a MANCHESTER 5 OCT 1857 Code 4S	£15
571	1d Perf lettered TI. Tied to piece by Type D5a MANCHESTER 6 JY 1858 Code W	£15
572	1d Perf lettered -B. Tied to piece by Type D5b MANCHESTER 17 NO 1857 Code 5T	£20
573	1d Perf lettered DC. Tied to piece by Type D5b MANCHESTER 10 SP 1857 Code 5O	£20
574	1d Perf lettered FI. Tied to piece by 1st Recut NORTHAMPTON MY 14 1862 Code H	£40
575	1d Perf Spec C10 lettered AJ. Tied to piece by lovely OSWESTRY AP 14 1860 Code B	£50
576	1d Perf lettered KD. Tied to piece by 2nd Period PLYMOUTH DE 8 1856 Code B	£20
577	1d Embossed. Type C2 SHREWSBURY 17 MY 1858 Code D	£15
578	1d Perf Spec C10 RF. Tied by two excellent strikes of the WORCESTER Original JA 31 58 Code C	£20

Spoon cancellations continued overleaf

ALL STAMPS LISTED BELOW HAVE BEEN PHOTOGRAPHED
ALL STAMPS ARE WITHOUT DEFECT & FINE USED UNLESS OTHERWISE STATED

SPOON CANCELLATIONS - continued

579	1d Perf lettered NJ. Tied to piece by 1st Recut WORCESTER AU 13 60 Code K	£20
580	1d Perf lettered KG. Tied to piece by 2nd Recut WORCESTER JA 10 63 Code L	£15
581	1d Perf lettered JK. Tied to piece by 3rd Recut WORCESTER AP 7 64 Code K	£15
582	1d Plate 109 lettered ND. Tied to piece by 7th Recut WORCESTER MR 8 69 Code K. Quite Scarce.	£40
583	1d Perf lettered ND. Tied to piece by Irish Type KINGSTOWN AP 12 1856 Code A	£15
584	1d Perf lettered SD. Tied to piece by part Irish Type TULLAMORE SE 3 1859 Code B	£15
585	1d Perf lettered IA. Tied to piece by English Type CORK NO 28 1856 Code E	£15
586	1d Perf lettered QJ-QK. Pair tied to piece by English Type DERRY AP 14 1856 Code A	£20
587	1d Perf lettered CA. Tied to piece by Irish Type DROGHEDA JY 28 1860 Code B	£20
588	1d Perf lettered IC. Tied to piece by English Type GALWAY AU 8 1856 Code B	£15
589	1d Perf lettered FK. Tied to piece by Irish Type KILKENNY JY 6 1857 Code E. Quite Scarce	£30
590	1d Perf lettered -A. Tied to piece by English Type LIMERICK SE 24 1856 Code E	£15
591	1d Perf lettered -B. Tied to piece by Irish Type LIMERICK 3 FE 24 1858 Code E	£15
592	1d Perf lettered -D. Tied to piece by Irish Type MULLINGAR AU 16 1861 Code B	£15
593	1d Perf lettered HI-HJ. Pair tied to piece by English Type NEWRY JU 24 1855 Code C	£30
594	1d Perf lettered LF. Tied to piece by Type A1 Dublin Diamond OC 18 1856 Code 1	£25
595	1d Perf lettered LK. Tied to piece by Type A3 Dublin Diamond MR 6 1856 Code 3	£15
596	1d Perf lettered QJ-QL. Strip of 3 tied to piece by Type A7 Dublin Diamond AU 13 1857 Code 7	£50
597	1d Perf lettered HE. Tied to piece by English Type BELFAST JY 3 1856 No Code	£20
598	1d Perf lettered MB. Tied to piece by Irish Type BELFAST SE 2 1857 No Code	£20
599	1d Perf lettered OC. Tied to piece by Irish Type BELFAST JA 16 1858 No Code	£15
600	1d Perf lettered MH. Tied to piece by Irish Type CLONMEL JA 24 1859 Code B stamp has a defect	£10

SQUARED CIRCLES

601	1d Plate 105 lettered BE. SHREWSBURY DE 9 81 Code 2h. Late use for this more difficult plate	£40
602	1d Plate 121 lettered JK. BIRMINGHAM MR 24 83 Code J 19 upright cancel. Late use for this plate.	£50
603	1d Plate 157 lettered QL. -TER -A 2 81 Code I neatly struck.	£30
604	1d Plate 157 lettered SD. BIRMINGHAM AP 12 81 Code G 54	£45
605	1d Plate 182 lettered OD. LONDON E.C. MY 29 82 Code G	£40
606	1d Plate 190 lettered TA. LIVERPOOL FE 4 81 Code YX 5 (upside down), one short perf.	£25
607	1d Plate 204 lettered QE. BIRMINGHAM JY 5 81 Code I 54	£35
608	1d Plate 206 lettered KD. -RT - 3 80 neatly cancelled	£30
609	½d SG 197/e Lovely LONDON E.C. MY 30 94 Code A1 special squared circle.	£10

TELEGRAPH RAILWAY

610	1/- SG 117 Plate 5 LK. Quite good 511 in small circle. Exeter Central London and Southwest Railway	£45
611	5/- SG 180 Rose lettered ED. Superb BERWICK STATION L.B. & S.C.Ry. Stamp Cat £250+	£175
612	5/- SG 181 Crimson lettered ED. Good example with DEFFORD STATION MID Ry. Stamp Cat £250+	£225
613	10/- SG 183 Ultramarine IB. BERWICK STATION L.B. & S.C.Ry, one missing perf on base. Cat £525	£275

WELSH POSTMARKS

614	1d Imperf Spec BS29(xb) Plate 79 BD. 4M, superb Blue 108 Carnarvon. Danzig & Goldsmith "C".	£80
615	1d Imperf Plate 92 Block of 6 EA-EC/FA-FC. Some good margins, neat 181 for Abergele. Cat £325	£85
616	1d Imperf Plate 83 RF. Good 4 margin with 763 for Swansea. Hand cut Tail to "R". Cat £80	£35
617	1d Perf Spec C3 Plate 2 lettered CA. Superb well centred with 763 for Swansea. Cat £65	£30
618	1d Plate 113 lettered RJ. Almost upright CARDIFF AP 24 - Code K, early plates with CDS very difficult	£35
619	1d Plate 130 lettered AL. Almost upright CARDIFF JA 6 70 Code K	£20
620	1d Plate 138 lettered OK. NEWTOWN(?) MON MY 1 74 Code G	£40
621	1d Plate 140 lettered HH. Upright LLANELLY SP 5 - Code C	£40
622	1d Plate 122 lettered EC. Attractive upright CARDIFF DOCKS SP 20 72 (no code)	£45
623	1d Plate 168 lettered OJ. NEWPORT MON JA 26 - Code H	£30
624	1d Plate 169 lettered JE. LLANWRST FE 19 - Code C, few slightly trimmed perfs at the left.	£20
625	1d Plate 171 lettered NJ. NEWPORT MON MY 27 76 Code G (has MON immediately after Newport)	£25
626	1d Plate 192 lettered LH. MY 5 77 CARDIFF with the word CARDIFF in the bottom of CDS.	£40
627	1d Plate 203 lettered GA. LLANELLY JY 27 78 Code D	£50
628	1d Plate 208 lettered PC. WREXHAM AU 19 79 Code D CDS, centred a little to left.	£25
629	1d Plate 210 NJ. NEWPORT MR 5 78 Code H with MON at base of cancel. More Difficult Plate CDS	£50
630	1d SG 172 16 Dots. Whitney Type H A94 PENARTH cancel.	£5
631	1d SG 166 OL. Quite good Whitney Type B E15 for PENYCWM, has appearance of a "cloth" cancel	£30
632	1d SG 172/3. Quite good 096 for COLWYN BAY	£15
633	6d SG 194 HH. Superb colour, lovely BWLCH-Y-CIBAU AP 15 85 Code A CDS. was and is a small village known in English as "pass of the husks" between Llanfyllin & Welshpool. Cat £240+ 100% Rare	£200
634	2/6d SG 178 FC. Lovely, with CARDIFF DOCKS JY 28 92 Code P Thimble type cancel. Cat £160+	£85
635	1d SG 219/20. TRAWSFYNYDD MERIONETHSHIRE RSO JU 18 07 9.45 am, still on paper.	£20

ALL STAMPS LISTED BELOW HAVE BEEN PHOTOGRAPHED
ALL STAMPS ARE WITHOUT DEFECT & FINE USED UNLESS OTHERWISE STATED

EDWARD VII VERY FINE USED –1902-10 DE LA RUE

- 636 ½d Spec M1(3) Deep Blue Green. Lovely very fine used with squared circle. £3
637 ½d SG 218a Yellow Green. Superb example, **St Andrews Cross attached**, Blairgowrie CDS. Cat £200+ £175

The following 6 Edward VII items came as a small lot with “**OVAL CANCELLED**” postmarks 1906/7 approx

We have added them to our list as a possible novelty page or unusual cancel for your collection.

- 638 1d SG 219 Block of 15. Unusual **CANCELLED 8 JUL 1906** in four Ovals. £15
639 1d SG 220 Block of 10. Unusual **CANCELLED 8 JAN 1907** in 5 Ovals and 4 “**PA**” Circular Perfins. £25
640 1/- SG 257. Excellent with **CANCELLED OCT Oval**, centre faded. £10
641 2/6d SG 262 Chalky Paper. Nice colour, unusual **CANCELLED 5 FEB 190-(6/7)** in Oval. Cat £180 £35
642 5/- SG 263. Appears to be cancelled in **Blue** possibly **Parcel Post**. Few faults. Cat £250 £15
643 5/- SG 263 Pair. **CANCELLED 22 MAR 1906** in Oval, minor creasing on one stamp at back. Cat £440 £50

End of the CANCELLED section

- 644 1½d SG 222 Spec M8(2) Slate Purple & Green. **NO 25 Double Ring CDS**. Cat £24 £4
645 1½d SG 224 Spec M9(2) Chalky Slate Purple & Bluish Green. Cat £22 £4
646 3d SG 232a Spec M20(2) Chalky Dull Purple on Orange Yellow. Still possibly on piece. Cat £100 £35
647 3d SG 233 Spec M20(3) Chalky Dull Reddish Purple on Yellow Lemon Back. Very difficult. Cat £85 £20
648 4d SG 236 Spec M23(3) Green & Chocolate Brown. **AP 29 03 CDS**. Cat £35 £7
649 4d SG 238 Spec M24(2) Chalky Deep Green & Chocolate Brown. Cat £20 £7
650 6d SG 245 Spec M31(1) Pale Dull Purple. Light **Registered** cancel. Cat £22 £4
651 9d SG 250 Spec M39(1) Dull Purple & Ultramarine. Lovely **11 -- 04 CDS**, one pulled perf. Cat £75 £15
652 9d SG 251a Spec M40(3) Chalky Slate Purple & Ultramarine. **NO 30 10 CDS**. Cat £75 £30
653 10d SG 254 Spec M42(1) Dull Purple & Carmine. **CDS**. Cat £75 £20
654 10d SG 255 Spec M43(2) Chalky Slate Purple & Carmine. **15 JY – CDS**. Weak Cross. Cat £75 £20
655 1/- SG 257 Spec M45(1) Dull Green & Carmine. **Registered CDS**. Cat £40 £7
656 2/6d SG 262 Spec M49(2) Chalky Dull Purple. **DE 3 06 Double Ring CDS**. Cat £180 £50
657 1d Scarlet (Provisional Government used in England) with ½d **GV** and 6d **SH Glazed Edward VII**.
This piece is an example of a Scarce Usage in which a Dolland Printing Provisional Overprint was accepted for use in GB. It is known that for a short time stamps with overprints were accepted by the British Post Office for use alongside normal British stamps. Since a 6d Edward VII has also been used, this would suggest a philatelist was probably responsible. 3 **GIPSY HILL 13 MR 22 CDS**'s £90

EDWARD VII VERY FINE USED –1911 Perf 14 HARRISON

- 658 ½d Spec M3(-) Deep but not blotchy. **NO 17 11 CDS**. Unusual unlisted shade. £25
659 ½d Spec M3(6) Bright Green. Fine impression. Fine used, light bar cancel. Cat £170 £60
660 1d Spec M6(6) Deep Rose Carmine. Good used very scarce shade. Cat £275 £100
661 2½d SG 276 Spec M17(2) Bright Blue. Good used. Cat £38 £7
662 4d SG 278 Spec M26(1) Bright Orange. **NO 18 11 CDS**. Cat £55 £25
663 4d Spec M26(2) Deep Bright Orange. **WESTCLIFFE 10.30 AM OC CDS**. Scarce. Cat £55 £25

EDWARD VII VERY FINE USED –1911 Perf 15x14 HARRISON

- 664 ½d SG 279 Spec M4(1) Dull Green. **SP 28 12 Double Ring CDS**. Cat £45 £15
665 1d SG 280 Rose Red. **NO 5 11 Double Ring CDS** Cat £25 £10
666 1d SG 281 Rose Carmine. Fine Used, cancel away from King's profile. Cat £15 £5
667 2½d SG 284 Spec M18(3) Dull Blue. Very Fine Used. Cat £15 £5
668 3d SG 285 Spec M22(1) Purple on Lemon. **23 AP CDS**. Cat £15 £5
669 4d SG 286 Bright Orange. Very Fine Used with CDS. Cat £15 £5

EDWARD VII VERY FINE USED –1911-13 SOMERSET HOUSE

- 670 1½d SG 289 Slate Purple & Green Fluorescent. Tied by **OXFORD JU 6 12 Code 3 CDS**. Cat £30 £8
671 2d SG 290 Deep Dull Green and Purple. Sheffield CDS. £5
672 2d SG 292 Spec M13(4) Grey Green & Bright Carmine. Part CDS. Cat £28 £6
673 5d SG 293 Dull Reddish and Bright Blue. Light Fine Used. Cat £22 £5
674 6d SG 297 Dull Purple Fluorescent. **DE 13 12 CDS**. Cat £22 £10
675 6d SG 299 Spec M33(3) Very Deep Reddish Purple. **Liverpool JAN 12 CDS**. Cat £45 £15
676 6d SG 301 Spec M34(1) Dull Purple. Crisp **WROUGHTON CDS for MY 8 1913**. Wonderful example of Dull Purple Dickinson Coated Paper. 1988 BPA Certificate. **Previously sold by SG at £250** £200
677 7d SG 305 Slate Grey. CDS. Cat £22 £8
678 9d SG 307 Spec M41(3) Dull Reddish Purple & Blue. **JA 17 13 CDS**. Cat £60 £20
679 9d SG 307a Deep Plum & Blue. **NO 15 13 CDS**. Cat £60 £30
680 10d SG 309 Spec M44(2) Dull Purple & Scarlet. Light CDS. Cat £75 £30
681 10d SG 311 Dull Reddish Purple & Carmine. **EAST 8PM OC CDS**. Cat £60 £20
682 1/- Spec M47(4) Green & Scarlet. CDS. Cat £40 £20
683 1/- SG 314 Spec M47(5) Green & Carmine. **1 AU 12 CDS**. Cat £35 £6
684 2/6d SG 317 Spec M50(4) Pale Dull Reddish Purple. Superb **SIDCUP JY 21 16 Small CDS** Cat £190 £95

For more Edward VII High Values see our Lists 83 and 86

ALL STAMPS LISTED BELOW HAVE BEEN PHOTOGRAPHED
ALL STAMPS ARE WITHOUT DEFECT & FINE USED UNLESS OTHERWISE STATED

EDWARD VII MINT – 1902-10 DE LA RUE

685	1½d SG 222 Spec M8(2) Slate Purple & Green. Mint. Cat £50	£12
686	2d SG 227 Spec M12(1) Chalky Paper Grey Green & Carmine Red. Very Fine Mint. Cat £45	£15
687	1½d SG 224 Spec M9(2) Chalky Paper Slate Purple & Bluish Green. Fine Mint. Cat £45	£10
688	2½d SG 230 Spec M16(2) Ultramarine. Mounted Mint.	£3
689	3d SG 232 Spec M19(1) Dull Purple/Orange Yellow. Very Fine fresh Mint. Cat £50	£13
690	3d SG 233 Spec M20(3) Chalky Paper Dull Reddish Purple on Yellow Lemon Back. Mint. Cat £225	£70
691	3d SG 234 Spec M20(5) Chalky Paper Purple/Lemon Back. Fine Mint. Cat £45	£13
692	4d SG 236a Spec M24(1) Chalky Green & Chocolate Brown. Fine Mint, a little off centre. Cat £40	£10
693	4d SG 236a Spec M24(1) Chalky Paper Green & Chocolate Brown. Unmounted Mint. Cat £75	£35
694	4d SG 241 Spec M25(3) Orange Red. Very Fine Mint. Cat £25	£7
695	5d SG 244 Spec M29(2) Chalky Paper Slate Purple & Ultramarine. Fine Mint. Cat £55	£15
696	7d SG 249 Spec M37(1) Grey Black. Unmounted Mint. Cat £24	£5
697	9d SG 251a Spec M40(2) Chalky Slate Purple & Pale Ultramarine. Very fresh lightly M/M. Cat £120	£30
698	1/- SG 257 Spec M45(1) Dull Green & Carmine. Mint. Cat £100	£30

EDWARD VII MINT –1911 Perf 14 HARRISON

699	½d SG 269 Spec M3(3) Deep Dull Green. Unmounted Mint. Cat £17	£10
700	½d SG 270 Spec M3(5) Pale Bluish Green. Mint. Cat £40	£25
701	1d Spec M6(4) Pale Rose Carmine. Unmounted marginal Mint. Cat £55	£40

EDWARD VII MINT –1911 Perf 15 x 14 HARRISON

702	1d SG 280 Spec M7(1) Rose Red. Unmounted Mint. Cat £80	£30
703	1d Spec M7(5) Rose Carmine Perf 15x14. Mounted Mint. Cat £15	£8
704	2½d SG 284 Spec M18(3) Dull Blue. Unmounted Mint, Shiny Double Gum (Scarce)	£160
705	2½d SG 284 Spec M18(3) Dull Blue. Mint. Cat £22	£12
706	3d Spec M22(4) Dull Red Purple. Unmounted Mint. Cat £85	£40
707	4d SG 286 Spec M27(1) Bright Orange. Very Fine Mint. Cat £30	£13
708	4d SG 286 Spec M27(1) Bright Orange. Unmounted Mint. Cat £60	£27

EDWARD VII MINT –1911-13 SOMERSET HOUSE

709	1½d SG 288 Spec M10(5) Dull Purple & Green. Unmounted Mint, few short perfs on base. Cat £60	£25
710	1½d SG 289 Spec M10(7) Slate Purple & Green Fluorescence. Unmounted Mint. Cat £65	£35
711	2d SG 290 Spec M13(1) Deep Dull Green & Red. Unmounted Mint. Cat £60	£30
712	2d SG 292 Spec M13(4) Grey Green & Bright Carmine. Unmounted Mint. Cat £55	£30
713	5d SG M30(4) Deep Plum & Cobalt Blue. Unmounted Mint. Cat £60	£30
714	5d SG M30(5) Pale Plum & Cobalt Blue Fluorescence. Unmounted Mint. Cat £90	£85
715	6d SG 295 Spec M33(1) Royal Purple. Very Fine lightly Mounted Mint. Cat £50	£40
716	6d SG 298 Spec M33a(3) Reddish Purple. Unmounted Mint. Cat £60	£42
717	7d Spec M38(1) Deep Slate Grey. Unmounted Mint (Scarce). Cat £200	£130
718	9d SG 306 Spec M41(1) Red Purple & Light Blue. Unmounted Mint. Cat £200	£110
719	10d SG 311 Spec M44(6) Dull Red Purple & Carmine. Unmounted Mint. Cat £150	£85
720	1/- SG 312 Spec M47(1) Dark Green & Scarlet. Unmounted Mint (Scarce). Cat £240	£120
721	1/- SG 314 Spec M47(5) Green & Carmine. Unmounted Mint. Cat £140	£75

GEORGE V 1911-1912 MACKENALS – VERY FINE USED & CIRCULAR DATE STAMP

722	½d SG 334 Pale Green. CDS. Perfs slightly trimmed at right as stamp comes from a booklet. Cat £40	£10
723	½d SG 335 Green from a booklet. NELSON (Lancs) 27 FE 13 Double Ring CDS. Cat £40	£15
724	1d SG 336 Scarlet. Good used with FE 28 13 part Double Ring CDS, comes from a booklet. Cat £30	£7
725	1d SG 337 Bright Scarlet. Good used, AP 27 13 Double Ring CDS, comes from a booklet. Cat £30	£8
726	1d SG 349 Spec N13(2) Bright Scarlet. DE 21 12 CDS. Cat £10	£4
727	1d SG 350wi. Block of 4, excellent perfs (unusual for this), neat JU 14 13 CDS, faint crease on one.	£80

GEORGE V 1912-22 CYPHER - VERY FINE USED AND CIRCULAR DATE STAMP

728	½d Spec N14(9) Dull Yellow Apple Green. Very Fine Used. Cat £12	£5
729	½d Spec N14(12) Olive Green. Dated Fine Used copy still on paper. 15 JU 16. Cat £35	£15
730	1d SG 361 Spec N16(14) Scarlet Vermilion. AUG 22 --. Cat £50	£15
731	1d Spec N16(16) Deep Orange Vermilion. Good used, very difficult. Cat £100	£25
732	1d. Beautiful copy tied to piece by excellent TOCKWITH 30 JY 14 Code A CDS	£7
733	1d. Attractive copy tied to piece with STRETFORD MANCHESTER 27 MY 15 Double Ring CDS	£10
734	1d. Lovely copy tied to piece by ELWORTH 7 MY 15 CDS	£6
735	1d. Excellent copy tied to piece by lovely BROMPTON NORTH ALLERTON NO 8 13 Code B CDS	£5
736	1d. Attractive copy tied to piece by GREETLAND 4 MR 14 HALIFAX CDS	£6
737	1d. Lovely copy tied to piece by LITTLEBOROUGH JA 15 15	£5
738	1d. Good copy tied to piece by quite good IRISH BANTEEER 27 JA 1– CORK CDS	£8
739	1d. Excellent copy tied to piece by very good IRISH TRALEE 16 NO 14 CDS	£6

GV Cypher continued overleaf

ALL STAMPS LISTED BELOW HAVE BEEN PHOTOGRAPHED
ALL STAMPS ARE WITHOUT DEFECT & FINE USED UNLESS OTHERWISE STATED

GEORGE V 1912-22 CYPHER - VERY FINE USED AND CIRCULAR DATE STAMP - continued

740	1½d Spec N18(12) Bright Yellow Brown. Good used 2 SP 19. Cat £8	£4
741	8d SG 390 Spec N28(1) Black on Yellow Paper. Very fine used, small part CDS. Cat £11	£8
742	9d SG 392 Spec N29(1) Agate. CDS.	£3
743	9d Spec N29(2) Pale Agate. Light CDS.	£3
744	9d SG 393 Spec N29(3) Deep Agate. CDS.	£3
745	9d SG 393a Spec N30(1) Olive Green. Small part CDS. Cat £30	£15
746	10d SG Spec N31(5) Pale Greenish Blue. Light CDS, couple of shortish perfs. Cat £20	£5

GEORGE V 1924-26 BLOCK- VERY FINE USED AND CIRCULAR DATE STAMP

747	10d SG 428 Spec N44(1) Turquoise Blue. CDS. Cat £40	£10
748	10d Spec N44(2) Deep Greenish Blue. CDS. Cat £40	£20
749	10d Spec N44(3) Dull Greenish Blue. Superb 9 AP 36 CDS. Cat £40	£20
750	10d Spec N44(4) Deep Dull Greenish Blue. CDS. Cat £40	£20

GEORGE V 1934-36 PHOTOGRAVURE - USED

751	½d SG 439a Sideways Watermark. Very fine used. Cat £5	£3
752	1d SG 440c Sideways Watermark. Fine used, good perfs. Cat £12	£7
753	1½d SG 441d Sideways Watermark. Good perfs, CDS. Cat £5	£3
754	2d SG 442b Sideways Watermark. Very fine used, slightly trimmed perfs at top. Cat £90	£15
755	½d, 1d, 1½d SG 439, 440 and 441wi Small Format Inverted Watermark. Fine to very fine used.	£4

GEORGE V 1913 WATERLOW SEAHORSES

756	2/6d SG 399 Spec N63(2) Deep Sepia Brown. Very fine used, well centred example cancelled by a lightly struck CDS. Previously offered by SG at £180	£160
-----	--	------

GEORGE V 1915 DE LA RUE SEAHORSES

757	2/6d SG408 Spec N64(13) Sepia (Seal Brown). Registered 28? Jan 19 kiss print in value tablet (not a Re-entry). Corner perf fault. Wenvoe certificate for shade. Cat £250	£60
758	5/- Spec N67(2) Carmine Quite good, well centred, London 4 Nov 18 CDS Wenvoe cert. Cat £475	£125
759	10/- Spec N70(2) Deep Blue (worn plate) Excellent copy with slightly smudged Nov ? 18 CDS, difficult shade. Wenvoe certificate for shade. Cat £1,000.	£150

GEORGE V 1918-1919 BRADBURY SEAHORSES

760	2/6d SG 413a Spec N65(1) Olive Brown. Well centred with Thimble CDS. Cat £100	£50
761	2/6d SG 415 Spec N65(4) Reddish Brown. Well centred, Very Fine CDS. Cat £75	£35
762	5/- SG 416 Spec N68(3) Rose Red. Good perfs, CDS centred a little to left. Cat £135	£50
763	5/- SG 416 Rose Red. 30 NOV 20 CDS. Cat £135	£40
764	10/- SG 417 Dull Grey Blue. Good used. Cat £175	£60
765	10/- Spec N71(3) Blackish Blue (lighter) Steel Blue Attractive, well centred with two London double ring CDS's. Unfortunate crease and stain on reverse. Cat £400	£95

GEORGE V 1934 RE-ENGRAVED SEAHORSES

766	2/6d SG 450. Well centred, 30 NO 36 CDS. Cat £40	£15
767	5/- SG 451. Good used, 15 NO 35 BERWICK on TWEED CDS. Cat £85	£25
768	10/- SG 452. Very fine used. Cat £80	£35

For further George V Seahorses Used see our High Value Lists 83 and 86

GEORGE V MINT – 1911-1912 MACKENNALS

769	1d Die 1a Plate 13b. Control A11(w) perf Type 1a. Attractive vertical corner Block of 10 showing the plate markings "small nick (outer) 20th right side, dot 18th right side". 8 Unmounted, top two mounted.	£55
770	½d SG 324 Spec N2(3) Yellow Green. Fine Mint. Cat £12	£5
771	½d SG 325 Bright Green. Mint. Cat £8	£3
772	½d Spec N2(5) Green. Unmounted Mint. Cat £13	£8
773	1d Spec N7(3) Deep Carmine Red. Fine Mint. Cat £40	£13
774	1d SG 330 Spec N8(2) Pale Carmine. Mint. Cat £10	£3
775	1d SG 332 Spec N9(1) Scarlet. Fine Mint. Cat £45	£17
776	½d SG 334 Spec N3(2) Pale Green. Unmounted Mint, good perfs for this. Cat £90	£55
777	½d Spec N5(2) Pale Green. Unmounted Marginal Mint. Cat £15	£5
778	1d SG 345 Spec N12(1) Scarlet. Unmounted Mint. Cat £15	£3
779	½d SG 347 Spec N6(4) Yellow Green. Unmounted Marginal Mint. Cat £20	£12
780	1d SG 349 Spec N13(2) Bright Scarlet. Unmounted Mint. Cat £25	£16
781	1d. Unmounted Mint Misperf probably from a paper fold, faint gum crease on reverse.	£190

GEORGE V MINT – 1912-22 CYPHER

782	½d SG 356 Spec N14(14) Blue Green. Unmounted Mint. Cat £60	£20
783	1d SG Spec N16(8) Pale Red. Fine Mint. Cat £15	£6
784	1½d SG 365 Spec N18(10) Yellow Brown. Unmounted Mint. Cat £30	£10
785	2d SG 366 Spec N19(1) Die 1 Orange Yellow. Unmounted Mint. Cat £14	£6

Mint George V Cypher shades continued on next page

ALL STAMPS LISTED BELOW HAVE BEEN PHOTOGRAPHED
ALL STAMPS ARE WITHOUT DEFECT & FINE USED UNLESS OTHERWISE STATED

GEORGE V MINT – 1912-22 CYPHER - continued

786	3d SG 376 Spec N22(7) Bluish Violet. Unmounted Mint. Cat £20	£8
787	4d SG 378 Spec N23(3) Deep Grey Green. Fine Mint. Cat £45	£10
788	4d SG 379 Spec N23(1) Grey Green. Unmounted Mint. Cat £25	£8
789	5d Spec N25(2) Reddish Brown. Very Fine Mint. Cat £60	£10
790	7d SG 387 Spec N27(1) Olive. Unmounted Mint. Cat £35	£17
791	8d SG 390 Spec N28(1) Black Yellow. Mint. Cat £32	£10
792	9d Spec N29(2) Pale Agate. Very Fine Mint. Cat £25	£10
793	10d Spec N31(5) Pale Greenish Blue. Fine Mint. Cat £25	£13
794	1/- Spec N32(7) Bistre Brown. Fine Mint. Cat £35	£8

GEORGE V 1913 MULTIPLE CYPHER - MINT

795	½d N15e and 1d N17e Unmounted Mint Coil Join Pairs. Good perfs, Very Scarce. Cat £950 as Mounted Mint.	£900
-----	--	------

GEORGE V 1915 DE LA RUE SEAHORSES – MINT

796	2/6d Spec N64(7) Pale Yellow Brown. Lightly M/M, nice, centred to right, several perf faults. Cat £375 <i>For further George V Seahorses Mint see our High Value Lists 83 and 86</i>	£60
-----	---	-----

GEORGE V 1924-26 BLOCK - MINT

797	½d SG 418 Spec N33(1) Green. Unmounted Mint.	£2
798	½d Spec N33(5) Deep Bright Green. Unmounted Mint. Cat £10	£4
799	1d SG 419 Spec N34(1) Scarlet. Unmounted Mint.	£1
800	1d Spec N34(4) Deep Scarlet Vermilion. Unmounted Mint. Very Difficult. Cat £80	£30
801	1½d SG 420 Spec N35(1) Red Brown. Unmounted Mint.	£1
802	1½d Spec N35(7) Chocolate Brown. Unmounted Mint. Cat £15	£8
803	4d Spec N39(1) Deep Grey Green. Mint. Cat £20	£10
804	6d Spec N41(1) Plum. Chalky. Somerset House. Mint. Cat £35	£13
805	6d Spec N42(6) Deep Purple. Harrison Printing. Very Fine Mint. Cat £20	£5
806	1/- Spec N45(4) Fawn Brown. Fine Mint. Cat £42	£23
807	6d A37 Control Block of 6 Stamps Unmounted Mint. Harrison printing. U/M control blocks now difficult.	£125

GEORGE V 1934 -36 PHOTOGRAVURE MINT

808	½d SG 439A Sideways Watermark. Fine Mint, good perfs. Cat £10	£3
809	1½d SG 441d Sideways Watermark. Unmounted Mint, good perfs. Cat £15	£9
810	2d SG 442b Sideways Watermark. Very Fine Mint, good perfs. Cat £125	£45
811	1d Spec N49a Intermediate Inverted Watermark. Mint, good perfs. Cat £25	£13
812	½d Spec N52a Intermediate Inverted Watermark. Mint. Cat £12	£5
813	½d Spec N46 Intermediate Format. V34 3 No Dot Block of 4 (2 U/M) Perf Type 2. Cat £75	£45
814	1½d Spec N51 Large Format. V34 68R Pair U/M Perf Type 2A. Cat £80 as a block of 4	£30
815	1½d Spec N51 Large Format. V34 100 Dot Pair (1 U/M) Perf Type 2A.	£15
816	1/- SG 449. Z36 in block no top line 5 Dot Control, lightly Mounted Mint, partially erased 1 in control.	£20

GEORGE V COMMEMORATIVES MINT & USED

817	1929 PUC 2½d Spec N Com 8 Shade 1 Blue Shade 2 Pale Blue. Both Unmounted Mint. Cat £88	£40
818	1929 PUC Unmounted Mint Set of 4, upright watermark	£15
819	1929 PUC Unmounted Mint Set of 3, ½d, 1d, 1½d Inverted Watermark, excellent perfs	£40
820	1929 PUC ½d Plate 4 Inverted Watermark. Rare lower left corner horizontal control K29 strip of 3. Fine Mint (control and corner copy U/M). The first control strip with Inverted Wmk we have seen.	£250
821	1935 Silver Jubilee ½d, 1d, 1½d, 2½d SG 453 to 456. Set of 4. Fine used/CDS	£4
822	1935 Silver Jubilee ½d, 1d, 1½d, 2½d SG 453 to 455 Inverted Watermark. Set of 3. CDS's	£6

GEORGE V INVERTED WMKS, MINT, VERY FINE USED & VARIETIES

823	1d SG 336 (wi) Spec N10B(2) Pale Scarlet. Inverted Watermark. AP 23 13 CDS. Cat £30	£15
824	1d SG 345a Spec N12(e). No Cross on Crown. Good used. Cat £50	£15
825	1d SG 350a Spec N13(f). No Cross on Crown. JA 23 13 CDS. Cat £60	£30
826	1d SG 332 (wi) Spec N9(A) Inverted Watermark. Fine Mint. Cat £45	£17
827	1d SG 336 (wi) Spec N10(1) Inverted Watermark. Unmounted Mint, good perfs. Cat £40	£17
828	2d SG 370 (wi) Spec N20b Inverted Watermark. Mint. Cat £40	£20
829	1912-22 1d Cypher – 5 good to fine used copies all showing part of word POSTAGE and watermark.	£10
830	1912-22 1d Spec N16(u). Attractive Mounted Mint copy of SPECIMEN Type 26 Imperf. Cat £90	£45
831	1912-24 4d SG 379. Fine used copy with interesting split watermark at left and right.	£5
832	2½d SG 372(wj) Spec N21(c). Reversed Watermark. Mint. Cat £65	£45
833	½d SG 418a Sideways Watermark. Unmounted Mint, good perfs for this. Cat £18	£10
834	1d SG 419a Sideways Watermark. Unmounted Mint, good perfs for this. Cat £40	£22
835	1929 PUC ½d SG 434(wi) Spec NCom5(a) Inverted Watermark. Mint, good perfs for this. Cat £15	£7
836	1929 PUC 1½d SG 436(wi) Spec N Com7(a) Inverted Watermark. Mint, good perfs. Cat £5	£3
837	1929 PUC ½d SG 434a Sideways Watermark. Mint. Good perfs for this. Cat £55	£20

ALL STAMPS LISTED BELOW HAVE BEEN PHOTOGRAPHED
ALL STAMPS ARE WITHOUT DEFECT & FINE USED UNLESS OTHERWISE STATED

EDWARD VIII

838	½d, 1d, 1½d SG 457, 8, 9wi Inverted Watermark. Fine used set. Cat £11	£4
839	½d SG 457 A36 12 Dot Perf Type 5 Pearl Flaw (mid state) Control Block of 6, 4 U/M. Cat £35	£25
840	½d SG 457 A36 16 Dot Perf Type 5 Control Block of 8 Unmounted Mint	£10
841	1d SG 458 A36 3 No Dot Perf Type 5 Control Block of 8 bottom 6 Unmounted Mint. Cat £15+	£12
842	1d SG 458 A36 6 Dot Perf Type 5 Control Block of 8 U/Mint, one stamp with corner perf missing.	£7
843	1½d SG 459 A36 2 No Dot Perf Type 5 Hair Flaw Re-touched Control Bk of 8 btm 6 U/M. Cat £80	£40
844	1½d SG 459 A36 4 Dot Perf Type 5 Control Block of 6, 5 Unmounted /Mint. Cat £10	£7
845	1½d SG 459 A37 13 No Dot Perf Type 5 Control Block of 6, 4 Unmounted Mint. Cat £10	£7
846	1½d SG 459 A37 13 Dot Perf Type 5 Control Block of 6, 4 Unmounted Mint. Cat £10	£7
847	2½d SG 460 A36 2 No Dot Perf Type 5 Control Block of 6 Unmounted Mint. Cat £20	£18
848	2½d SG 460 A36 2 Dot Perf Type 5 Control Block of 6, 4 Unmounted Mint. Cat £20	£14
849	1936 1½d Booklet Pane SG PB3(E) Upright Wmk (Type 2). G5 no dot U/M, good perfs.	£30
850	1936 1½d Booklet Pane SG PB3A(I) Inverted Wmk. Unmounted Mint pane with good perfs. Cat £20	£15
851	1d SG 458 First Day 14 SP 1936. Interesting postcard addressed to Lucknow India with handwritten note on reverse asking the recipient to keep the card for his collection and signed "Uncle". Stamp tied by very good CHANDLERS FORD EASTLEIGH HANTS 10.30 a.m. 14 SP 36	£25

GEORGE VI CONTROLS BLOCKS and STRIPS UNMOUNTED MINT (unless otherwise stated)

852	1937 1½d Coronation Corner Block of 6. 37 No "A" 3 No Dot, 5 Unmounted Mint.	£25
853	1937 1½d Coronation Corner Block of 6. A37 3 Dot, 5 Unmounted Mint. Cat £10	£7
854	1937 1½d Coronation Corner Block of 6. A37 6 No Dot, 5 U/M. Ray Flaw. Cat £10	£7
855	1937 1½d Coronation Strip of 3. A37 20 Dot. R18/1 has variety pearl in orb . Cat £60 as bk 6	£15
856	1937 ½d SG 462 Dark Colours Control Block of 6. C38 40No Dot. Unmounted Mint Cat £7	£5
857	1937 1d SG 463 Dark Colours Control Block of 6. B37 11Dot. Unmounted mint. Cat £7	£6
858	1937 1½d SG 464 Dark Colours Control Block of 6. B37 55Dot. U/M Some slight staining. Cat £8	£5
859	1937 2d SG 465 Dark Colours Control Block of 6. D38 7Dot (4 Unmounted Mint). Cat £20	£14
860	1937 2½d SG 466 Dark Colours Control Block of 6. H40 22No Dot. Unmounted Mint. Cat £10	£8
861	1937 3d SG 467 Dark Colours Control Block of 6. C38 3No Dot. U/M, a little toned. Cat £60	£45
862	1937 4d SG 468 Dark Colours Control Block of 6. D38 1No Dot Perf Type 6B. (4 U/M). Cat £11	£7
863	1937 5d SG 469 Dark Colours Control Block of 6. G40 1No Dot. Unmounted Mint Cat £25	£22
864	1937 6d SG 470 Dark Colours Ctl Blk of 6. D38 1No Dot Perf Type 2.U/M Some split perfs. Cat £30	£20
865	1937 7d SG 471 Dark Colours Control Block of 6. E39 2No Dot. (4 Unmounted Mint). Cat £65	£50
866	1937 8d SG 472 Dark Colours Control Blk of 6. E39 1No Dot. Unmounted Mint, little aged. Cat £70	£50
867	1937 9d SG 473 Dark Colours Control Block of 6. P44 2No Dot. (5 Unmounted Mint). Cat £85	£73
868	1937 10d SG 474 Dark Colours Control Block of 6. H40 1No Dot. Unmounted Mint. Cat £70	£62
869	1937 11d SG 474a Dark Colours Control Block of 6. 1 Dot Perf Type 5. (5 Unmounted Mint).	£38
870	1937 1/- SG 475 Dark Colours Control Block of 6. K42 6No Dot Perf Type 6B. (2 U/M) Cat £80	£50
871	1941 ½d SG 485 Light Colours Control Block of 6. K42 125Dot. Unmounted Mint Cat £15	£12
872	1941 1d SG 486 Light Colours Control Block of 6. K42 76Dot. Unmounted Mint. Cat £15	£12
873	1941 1½d SG 487 Light Colours Control Block of 6. L42 176 No Dot. Unmounted Mint Cat £15	£13
874	1941 2d SG 488 Light Colours Control Block of 6. J41 24Dot. Unmounted Mint, Cat £12	£10
875	1941 2½d SG 489 Light Colours Control Block of 6. T46 205Dot. Unmounted Mint. Cat £7	£6
876	1941 3d SG 490 Light Colours Control Block of 6. O44 25No Dot. U/Mint Top 2 toned. Cat £25	£18
877	1950 ½d SG 503 Change Colours Cylinder Block of 6. 151 No Dot (4 Unmounted Mint).	£15
878	1950 1d SG 504 Change Colours Cylinder Block of 6. 191 No Dot. U/M, crease in margin. Cat £15	£9
879	1950 1½d SG 505 Change Colours Cylinder Block of 6. 196 Dot. Unmounted Mint, Cat £15	£13
880	1950 2d SG 506 Change Colours Cylinder Block of 6. 68 No Dot. Unmounted Mint Cat £25	£22
881	1950 2½d SG 507 Change Colours Cylinder Block of 6. 277 No Dot. Unmounted Mint.	£20
882	1950 4d SG 508 Change Colours Cylinder Block of 6. 13 Type 5 (E/I) Dot. (5 U/Mint). Cat £35	£30
<i>The following George VI Control Blocks are Rarer and More Difficult to find</i>		
883	1937 2d SG 465 Dark Colours Control Block of 6. H40 14Dot. Unmounted Mint. Cat £100	£85
884	1937 3d SG 467 Dark Colours Control Block of 6. E39 11No Dot. Unmounted Mint, Cat £110	£95
885	1937 6d SG 470 Dark Colours Control Block of 6. D38 1No Dot Perf Type 6. U/Mint Cat £125	£110
886	1937 7d SG 471 Dark Colours Control Block of 6. 10 No Dot Perf Type 6. Unmounted Mint, Cat £150	£130
887	1937 10d SG 474 Dark Colours Cylinder Blk of 6. 7 No Dot Perf Type 6. Unmounted Mint Cat £200	£180
888	1941 ½d SG 485 Light Colours Control Block of 6. P44 129 Dot. Unmounted Mint Cat £85	£75
889	1941 1d SG 486 Light Colours Control Block of 6. K42 74Dot. Unmounted Mint. Cat £95	£80
890	1941 2d SG 488 Light Colours Control Block of 6. P44 39No Dot. Unmounted Mint. Cat £80	£67
891	1941 2½d SG 489 Light Colours Control Block of 6. L42 111No Dot Perf Type 6. 5 U/M. Cat £120	£100
892	1941 3d SG 490 Light Colours Control Blk of 6. L42 22Dot Perf Type 6B. Unmounted Mint Cat £150	£130
893	1950 2½d SG 507 Change Colours Cylinder Block of 6. 279 No Dot. Unmounted Mint. Cat £50	£43

We have a very good stock of George VI control & cylinder blocks of definitives and commemoratives

ALL STAMPS LISTED BELOW HAVE BEEN PHOTOGRAPHED
ALL STAMPS ARE WITHOUT DEFECT & FINE USED UNLESS OTHERWISE STATED

GEORGE VI HIGH VALUES

894	1939 10/- Spec Q32(d). with dot on scroll variety clear, light AP 40 part registered cancel. Cat £75	£35
895	10/- SG 478 – Scarce block of 6, light CDS's with the variety Spec Q32(h), dark line across bottom right stem R1/4. Cat £75 Some creasing on reverse of variety. Would make a superb block of 4.	£100
896	10/- SG 478b – Brilliant block of 8, with 1 FE 43 CDS's, Rare in multiples despite modest catalogue.	£90
897	£1 SG 478c – Lovely block of 4 with CDS's. Cat £104+	£50

GEORGE VI

898	1937 Dark Colours Sideways Wmk SG 462a-SG466a Set of 5. Good perfs, L/M mint. Cat £172	£50
899	1941 Light Colours Sideways Wmk SG 486a-SG489a Set of 3. Excellent perfs, L/M mint. Cat £48	£20
900	1950 1d SG 504d Spec QB18 Booklet Pane Advertising. Upright wmk, some trimmed perfs.	£10
901	1951 1d SG 504. Unmounted Mint vertical Pair, top stamp with Imperf margin above. Unusual.	£150
902	1951 2d SG 506a Spec Q12(f). Unmounted Strip of 3 with Sideways Wmk and Swan Head to the 2 of 2d retouched on centre stamp.	£15

GEORGE VI USED

903	1937 Dark Colours Set of 15 SG 462 to 475. CDS. Cat £10	£5
904	1937 Dark Colours Sideways Wmk Set of 5 ½d to 2½d SG 462a to 466a. F/U to CDS. Good perfs.	£40
905	1937 Dark Colours Inv Wmk Set of 5 ½d to 2½d SG 462 to 466wi. CDS. Good perfs. Cat £48.85	£8
906	1939-48 High Values Set of 6 SG 476 to 478c. Very Fine Used with CDS. Cat £60	£30
907	1941-2 Light Colours Sideways Wmk Set of 3 1d SG 486a, 2d SG 488a, 2½ SG 489a. CDS. Cat £36	£15
908	1941-2 Light Colours Inverted Wmk Set of 3 ½d SG 485, 2d SG 488, 2½ SG 489wi. CDS. Good perfs	£2
909	1948 Silver Wedding Set SG 493/4. CDS, £1 lovely left corner copy.	£20
910	1950 Change Colours Sideways Wmk Set 1d SG 504a, 1½d SG 505a, 2d SG 506, 2½ SG 507a. CDS	£4
911	1950 Change Colours Inverted Wmk Set of 5 ½d SG 503a to 2½ SG 507wi. CDS. Cat £12.25	£7

QEII

912	1955 Waterlow 2/6d SG536 & 5/- SG 537. Both well centred, perfect perfs, very fine L/M mint. Cat £55	£20
913	1958 De La Rue 5/- SG 537A. Quite well centred, good perfs, very lightly mounted mint. Cat £65	£25
914	1958 De La Rue 10/- SG 538A. Lovely well centred, perfect perfs, very lightly M/M. Cat £225	£80
915	1958 Da La Rue Castles 2/6d to £1 SG 536a to 539a Unmounted Mint. Lovely well centred copies with perfect perfs, the 2/6d, 5/- and 10/- being left marginal clearly showing the Wmk. £1 has slight marks in/on gum on reverse but all visually attractive. Cat £600. Normal Price £435. This set just	£275
916	1958 4d Crowns Pale Ultramarine. U/M strip of 4, large coil leader, trimmed perfs at base as usual.	£10
917	1958-61 Graphite 1½d SG 589wi. Very Fine Used copy of this difficult value, excellent perfs. Cat £60	£25
918	1958-61 Graphite 3d SG 592a. An Unmounted Mint copy of this very difficult variety. Cat £550	£425
919	1959 2nd De La Rue 5/- SG 596. Very fresh Unmounted Mint top corner copy. Cat £45	£25
920	1958-65 Multiple Crowns. Sideways Set of 8 good to fine used, good perfs and several CDS.	£10
921	1960-67 Phosphor 2½d SG 614a Inverted Watermark. Lovely copy of this difficult stamp with WARWICK and LEAMINGTON SPA 9 MCH 1965 CDS. Type II one band left.	£50
922	1960-67 Phosphor 8d SG 617b. Unmounted Mint Cylinder Block 4 Dot.	£5
923	2005 – 50th Anniversary of First Castle Def MS2530. Miniature sheet in V/F/CDS used condition.	£5
924	SG 2296 E. Good Block of 4 with centrally struck single CDS still on paper.	£10

QEII VARIETIES

925	1958 to 1965 3d Multiple Crown Plain & Phosphor SG 575 and SG 615. These 5 items have been collected to display the variety Phantom "R" and its Retouches. The collector felt there are 4 "States" on the Plain SG 575. The SG catalogue lists the Phantom "R" and First and Second Retouch on SG 575 and just the Phantom "R" on the Phosphor SG 615. So, we have 4 Unmounted Mint corner Blocks of 4 of SG 575 MC watermark Plain, and a lovely Block of 6 of the Phosphor SG 615, which is perforated through the bottom margin. I have decided to offer them as a whole.	£125
926	1960 Europa 6d SG 621. Lovely block of 4 with single central LONDON E.C. 19 SP 60 First Day CDS	£10
927	1966 Technology 1/6d SG 704 Plain. Unmounted Mint, downward shift design into lower margin.	£5
928	1966 Battle of Hastings 6d SG 711 Plain. Mounted Mint, good colour shift to the right & upwards.	£5
929	1966 Xmas 3d SG 713c Plain. Fine Used example with Missing "T" variety	£10
930	1966 Xmas 3d SG 713pc Phos. Missing "T". Positional block of 4 mounted in margin only. Cat £45	£30
931	1967 EFTA 9d SG 715d Plain. Unmounted Mint with Brown (rail trucks and cargo) omitted	£80
932	1967 EFTA 9d SG 715pd Phosphor. Marginal U/M, Brown (rail trucks and cargo) omitted. Cat £80	£60
933	1967 EFTA 1/6d SG 715 Plain. Good Unmounted Mint with significant downward and sideways shift of the New Blue. Very visible in the flags especially 1st and 2nd 5th and 7th. Unusual.	£35
934	1967 EFTA 1/6d SG 716pf Phosphor. U/M with New Blue omitted 2nd and 7th flags. Cat £125	£115
935	1974 4½d Christmas SG 967. Unmounted Mint, Translucent with normal for comparison. Unusual	£20
936	1977 13p SG 1037 Silver Jubilee Dry Print. UM – Queen's face exceptionally clear, with normal	£20
937	1980 Charlotte Bronte 12p SG 1125pEa Missing "P" in value. U/M, with normal to compare. Cat £25	£20
938	1967 EFTA 9d SG 715wi Plain Inverted Watermark. Unmounted Marginal Mint. Cat £140	£110
939	1967 EFTA 1/6d SG 716wi Phosphor. Inverted Watermark Unmounted Marginal Mint.	£70

**ALL STAMPS LISTED BELOW HAVE BEEN PHOTOGRAPHED
ALL STAMPS ARE WITHOUT DEFECT & FINE USED UNLESS OTHERWISE STATED**

GREAT BRITAIN USED ABROAD

ALEXANDRIA

940	1d Z4 Plate 86 lettered SF. Lightish small type B01 cancel .	£20
941	1d Z4 Plate 96 lettered KB. Excellent small type B01 cancel .	£30
942	2½d Z7 Plate 1 lettered OG. Lightish large type B01 cancel tied to piece. (Cat £120 in GB)	£20
943	3d Z10 HD. Excellent small type B01 , stamp has trimmed perfs at right, small thin. (Cat £350 in GB)	£30
944	3d Z11 Plate 4 Wmk Emblems lettered AA. Good 3 HOS B01 cancel difficult plate. (Cat £250 in GB)	£95
945	3d Z12 Plate 6 DG. Excellent large type B01 cancel , not an easy plate in Alexandria. (Cat £70 in GB)	£35
946	4d Z17 Plate 11 Dull Vermilion lettered FB. Excellent small type B01 cancel . (Cat £90 in GB)	£20
947	4d Z17 Plate 12 lettered JI. Excellent large type B01 cancel . (Cat £75 in GB)	£20
948	6d Z24 Plate 8 Violet lettered EL. Lovely 5 VOD B01 cancel which is not that common.	£60
949	6d Z25 Plate 12 QI. Good B01 , difficult plate, straight edge left and trimmed perfs top.(Cat £350 in GB)	£35
950	6d Z27 Plate 12 lettered OK. Good upright large type B01 cancel . (Cat £300 in GB)	£60
951	1/- Z38 Plate 7 AB.Good large type B01 , short "A" Row.Difficult plate, one perf missing.(Cat £90 in GB)	£25
952	1/- Z39 Plate 8 NI. Good large type B01 . Difficult plate, straight edge at left. (Cat £175 in GB)	£25
953	2/- Z40 Plate 1 NK. Good large type B01 , difficult value, some fading at right. (Cat £225 in GB)	£40
954	5/- Z41 Plate 1 lettered FC. Good example with superb large type B01 cancel . (Cat £675 in GB)	£150
955	1d Venetian Red lettered NA. Quite good large type B01 cancel , on value, not listed by Gibbons.	£30

ASCENSION

956	6d Z16 Pair Small Type Z2 MY ? 88 (no date figures), BPA Cert (right stamp does not have diagonal creases mentioned on the cert). Cat £800	£475
957	1/- Z18 Excellent AU 10 00 Code A CDS, some loss of colour but very rare. Cancel Type Z3 Cat £1300	£400
958	KEVII 6d Dull Purple & KGV 1d Mackennal Scarlet. Lovely pair tied to piece by 21mm 22 MY 12 CDS. Ex Seymour & Pearmund. SG Z30 & Z38b . Cat £495	£350

BEYROUT

959	1d Z2 Plate 140 lettered LF. Excellent well centred upright G06 cancel .	£35
960	2d Z4 Plate 14 lettered GI. Superb G06 cancel tying to piece.	£35
961	2½d Z5 Plate 1 Blued Paper lettered IE-IF. Pair with single G06 , right hand stamp has surface fault.	£60
962	2½d Z6 Plate 2 White Paper lettered HF. Good G06 tying to dated piece with BRITISH POST OFFICE MY 11 76 Code A BEYROUT CDS alongside	£40
963	2½d Z7 Plate 4 White Paper lettered NG-NH. Pair with single G06 cancel . Difficult Plate.	£50
964	2½d Z8 Plate 20 lettered PI. Interesting sideways copy tied by upside down G06 with superb BRITISH POST OFFICE NO 16 80 Code A BEYROUT CDS upright alongside.	£40
965	2½d Z9 Plate 22 NJ/OJ Pair. Tied to piece by BEYROUT BRITISH P. O. MY 29 84 Hooded Circle .	£40
966	4d Z15 Plate 15 lettered LA. Good upright G06 on the more difficult plate 15. (Cat £325 in GB)	£110
967	10d Z24 Plate 1 JB. Good looking, superb G06 which hides small perf fault at base. (Cat £400 in GB)	£50
968	1/- Z28 Plate 14 lettered AL. Quote good G06 on later value, tiny thin on perf. (Cat £170 in GB)	£50
969	2/- Z29. Cancelled low but is G06 . (Cat £240 in GB)	£50
970	½d Z31 Deep Green 2d Z35 Pale Rose tied to piece by single GO6 with BRITISH POST OFFICE OC 1 83 Code A CDS . 2d slight fault.	£50
971	1d Venetian Red Excellent part BRITISH POST OFFICE BEYROUT CDS No Central date . Unusual	£35
972	5d Z37 Excellent G06 . Cat £150	£95
973	1d Z38 14 Dots. Good Pair with single GO6 . Listed by SG but unpriced.	£150
974	½d Z40 Very Good slate blue colour with small part Beyrout Hooded Circle	£25
975	2d Z42 lettered ED. Lovely colour and part Beyrout Hooded Circle . Cat £110	£80
976	2½d Z43 Excellent colour,tied to piece by complete Beyrout BPO DE 17 84 Hooded Circle (no code) .	£25
977	4d Z44 lettered RD Quite good colour & excellent part BEYROUT HOODED CIRCLE . Cat £300	£250

BRITISH ARMY CAMPS

978	GV 1d Mackennal tied to piece by Lovely DEEPCUT CAMP 7.15 PM 9 JY 13 FARNBOROUGH	£20
979	½d GV, ½d PUC & ½d PHOTOGRAVURE tied to Registered piece by 2 Rare BLUE HAMPTON COURT CAMP 20 MY 37 KINGSTON UPON THAMES SY	£65
980	GV 1d Mackennal tied to piece by HORNCLIFFE CAMP 9.15 PM MY 12 13 FOLK-	£20
981	GV 1d Mackennal tied to piece by LARK HILL CAMP MY 25 17 CDS SALISBURY	£20
982	GV 1d Mackennal tied to piece by LONGMOOR CAMP NO 21 12 EAST LISS S.O. HANTS	£25
983	GV 1d Mackennal tied to piece by Full WHITTINGTON BARRACKS 7.15 PM FE 27 13 LICHFIELD	£25
984	1d SG 172. Tied to piece by excellent F46 with SHORNCLIFFE CAMP D1 xp MY 2 01 CDS . Difficult.	£20

BRITISH ARMY FIELD POST OFFICE PARCEL POST LABELS & ARMY POST OFFICE

985	GV 4d Cypher tied to part Parcel Post label by ARMY POST OFFICE X 9 JU 17 2	£25
986	GV 4d Cypher Pair tied to Parcel Post label by FIELD POST OFFICE B 3 DE 15 43	£40
987	GV 4d Cypher tied to Parcel Post label by FIELD POST OFFICE B 22 FE 16 7	£30

For further Army Post Office and Field Post Office see also items 414 to 417

ALL STAMPS LISTED BELOW HAVE BEEN PHOTOGRAPHED
ALL STAMPS ARE WITHOUT DEFECT & FINE USED UNLESS OTHERWISE STATED

CONSTANTINOPLE

988	1d Z72 Plate 60 lettered FB. Very good copy, clearly showing Re-entry, pulled perf at NE corner.	£25
989	1d Z74 Plate 90 lettered AA. Good "C" cancel.	£30
990	1d Z74 Plate 95 lettered PI. Superb "C" cancel.	£25
991	1d Z74 Plate 212 lettered TD. Goodish "C" cancel.	£25
992	2½d Z79 Plate 3 HB wmk anchor upright "C", some perfs a little toned. (GB Cat £175)	£40
993	2½d Z81 Plate 8 lettered PG. Good "C" cancel. (Cat £80 in GB)	£20
994	2½d Z81 Plate 11 lettered JF. Good "C" cancel, but a couple of missing perfs. (Cat £80 in GB)	£10
995	2½d Z81 Plate 15 lettered FH. Lovely copy with "C" cancel. (Cat £80 in GB)	£20
996	2½d Z83 Plate 22 lettered LL. Good "C" cancel. (Cat £45 in GB)	£10
997	3d Z86 Plate 6 PH. Very good wing margin, excellent "C" cancel, difficult this issue (Cat £70 GB)	£40
998	6d Z99 Plate 5 lettered BK. Fine used copy with "C" cancel. (Cat £140 in GB)	£20
999	6d Z100 Plate 6 Deep Lilac lettered LK. Good "C" cancel. (Cat £185 in GB) couple perfs short	£30
1000	6d Z101 Plate 6 lettered MF. "C" cancel. (Cat £175 in GB)	£25
1001	6d Z103 PI 11 Deep Chestnut IE. Wing margin Good "C", couple slight perf faults (GB Cat £125)	£20
1002	1/- Z115 Plate 4 TB. Good "C", some trimmed perfs, difficult Emblems wmk. (Cat £275 GB)	£25
1003	5/- Z121 Plate 1 Rose lettered BJ. Excellent "C" cancel. Some short perfs at top (GB Cat £675).	£150
1004	5/- Z121 Plate 2 HI. Good example of small "C" not often seen on this value. (Cat £1500 in GB).	£250

CRIMEA

1005	6d Z22 Embossed. Superb star between cyphers (OXO) cancel on this Rare used abroad stamp. A little cut to shape. RPS Cert(1989) says extensively thinned but seldom seen. Cat £2,250	£350
1006	1d Z2 Spec C1 Plate 197 lettered KB. Cancelled by superb crown between stars, centred a little left, listed but uncatalogued by Gibbons	£200
1007	1d Z11 Plate 175 SK. Brilliant star between cyphers (OXO), centred a little high. RPS Cert (1989).	£150
1008	1d Z13 SG 24 Spec C3 Plate 11 LL. Good star between cyphers (OXO), centred a little low. Cat £110	£60
1009	1d Z13 SG 24 Spec C3 Plate 9 FH. Superb star between cyphers (OXO). Slightly trimmed perfs.	£100
1010	1d Perf Spec C5 Large Crown P.16 Blue Paper, Plate 12 Missing Imprimatur lettered JJ-JL. Good centring, IJ dot near NW corner of "J" square (Statham P 2278), several OXO's. Difficult Plate	£500

CYPRUS

1011	½d Z14 Plate 15 lettered RX. Superb, centred a little left, excellent 942 for Larnaca.	£200
1012	1d Z15 Plate 171 lettered SI. Superb 942 for Larnaca.	£175
1013	1d Z15 Plate 191 RA/SA. Very unusual vertical pair still on some paper, superb 3 VOS 942 Larnaca, centred a little left. Multiples especially vertical are not common. Cat from £360	£325
1014	1d Z15 Plate 205 GD. Difficult plate with faintish upright 942 for Larnaca, very faint corner crease	£130
1015	2½d Z18 Plate 10 lettered EG. Excellent 942 for Larnaca, small repair and couple of short perfs above at NW square. Cat from £75	£40
1016	2½d Z18 Plate 11 lettered CC. Excellent 942 for Larnaca. Cat from £75	£50
1017	2½d Z18 Plate 12 lettered AH. Excellent 942 for Larnaca. Cat from £75	£50
1018	2½d Z18 Plate 15 lettered IB. Good 942 for Larnaca tied to small piece. Cat from £75	£50
1019	4d Z21 Plate 16 lettered FI. Superb 942 for Larnaca still on paper, just a few pulled perfs at SW corner do not detract from very difficult value. Cat £550	£275
1020	2½d Z32 Plate 13 FC. Good copy, 975 for Limassol slightly indistinct but readable. Cat from £250	£190
1021	2½d Z32 Plate 14 lettered ME. Lovely copy, superb 975 for Limassol which is very scarce.	£250
1022	1d SG2 Plate 218 lettered CH. Cyprus Overprint. Quite good 969 for Nicosia. Cat £70	£60

EGYPT

1023	2½d ZA5 Plate 23 lettered CF. BRITISH ARMY POST OFFICE OC 2 82 EGYPT CDS Scarce <i>GORDON RELIEF SOUAKIN -see Rare & Unusual section</i>	£90
------	---	-----

FRANCE

1024	4d SG 62. Lovely copy of this unusual Used Abroad stamp with part France arrival CDS which looks like one of the scarcer cancels. Cat £450+125%	£200
------	---	------

GIBRALTAR

1025	½d Z15 Plate 11 KV and 1d Z19 Plate 212 Pair QH-QL. Interesting piece, one very good ½d and 1d tied with A26 cancels, both quite difficult. The other stamp is discounted from valuation.	£80
1026	1d Z19 Plate 140 lettered MH. Good A26 cancel. Scarcity Code "A".	£20
1027	1d Z19 Plate 152 HL. Goodish A26 cancel, centred left and NW corner perf missing. Scarcity Code "B".	£10
1028	1d Z19 Plate 165 lettered OC. Good small type A26 cancel. Scarcity Code "B".	£30
1029	1d Z19 Plate 186 lettered AI. Excellent small type A26 cancel. Scarcity Code "A".	£20
1030	1d Z19 Plate 194 lettered LC. Good large type A26 cancel. Scarcity Code "A".	£20
1031	1d Z19 Plate 203 lettered EH. Quite good large type A26 cancel. Scarcity Code "A".	£20
1032	1d Z19 Plate 214 lettered AD. Good large type A.26 cancel. Scarcity Code "B".	£35
1033	2½d Z26 Plate 3 AG. Excellent upright A26 on the difficult Orb wmk, 2 short perfs. (Cat £150 GB)	£50

Gibraltar continued on the next page

**ALL STAMPS LISTED BELOW HAVE BEEN PHOTOGRAPHED
ALL STAMPS ARE WITHOUT DEFECT & FINE USED UNLESS OTHERWISE STATED**

GIBRALTAR - continued

1034	2½d Z26 Plate 7 lettered MB. Good small type A26 cancel . Some slight toning. (Cat £85 in GB)	£15
1035	6d Z42. Good wing margin copy, excellent small type A26 cancel . (Cat £120 in GB)	£25
1036	6d Z44 Plate 5 lettered PG-PH. Small type A26 cancels . (Cat £280 in GB)	£40
1037	6d Z46 Plate 9 lettered NB. Small type A26 cancel . (Cat £90 in GB)	£15
1038	6d Z49 Plate 12 lettered LI. Superb wing margin with lovely small type A26 cancel . (Cat £300 in GB)	£50
1039	1d Z71 lettered SB. Good large type A26 cancel . (Cat £15 in GB)	£10

MALTA

1040	1/- Z22 Smudged " M " cancel tying to piece. (Cat £350 in GB). Quite difficult	£50
1041	1d Z30 Plate 85 lettered JL. Good example of this difficult plate with good small type A25 cancel , slightly trimmed perfs towards SW corner. Scarcity code "C"	£30
1042	1d Z30 PI 99 FA. Good A25 on difficult plate , rated "D" scarcity, some trimmed perfs at top of NE sq	£20
1043	1d Z30 Plate 115 PD. Good copy of this difficult plate, centred a little to left showing clear Plate number & good small type A25 cancel , small mark above Queen's head due to wmk. Scarcity code "C".	£40
1044	1d Z30 Plate 140 lettered KG. Very attractive Malta CDS , slightly trimmed perfs towards NE corner and one missing perf near SW corner. Scarcity Code "A".	£20
1045	1d Z30 Plate 154 lettered FA. Excellent copy from this difficult plate. Scarcity code "D".	£50
1046	1d Z30 Plate 164 lettered OI. Goodish small type A25 cancel . Scarcity code "B".	£30
1047	1d Z30 Plate 190 lettered OJ. Neat copy, slightly indistinct small type A25 . Scarcity code "B".	£30
1048	1d Z30 Plate 204 lettered BI. Goodish small type A25 cancel . Scarcity code "C".	£40
1049	2d Z34 Plate 13 lettered LK. Good small type A25 cancel upside down.	£20
1050	2d Z34 Plate 13 lettered LK & 3d Z43 Plate 6 lettered OA-OB. Interesting piece with good 2d value and reasonable 3d Pair (one defective) tied by small type A25's and JU 9 71 CDS . (Cat £170 in GB).	£45
1051	2½d Z36 Plate 2 lettered IL wmk anchor. Excellent with small type A25 cancel . (Cat £120 in GB)	£25
1052	2½d Z38 Plate 4 lettered PA. Good used, small type A25 very slightly light. (Cat £85 in GB)	£20
1053	3d Z41 EG. Very attractive, MALTA DE 6 64(?) CDS , some small faults. Difficult. (Cat £350 in GB)	£40
1054	3d Z42 Plate 4 AK Difficult Emblems wmk , small part B MALTA CDS . Just a little worn. (GB Cat £250)	£40
1055	3d Z43 Plate 5 SA. Good, excellent small type A25 cancel . Couple of short perfs. (Cat £70 in GB)	£30
1056	3d Z43 Plate 6 lettered BJ. Part A25 and part Malta CDS . (Cat £70 in GB)	£25
1057	3d Z43 Plate 7 lettered AG. Good A25 cancel . (Cat £70 in GB)	£35
1058	4d Z47 SG66. Excellent A MALTA FE 2 62 CDS , scarce on this issue in GB. (Cat £150+ 125% in GB)	£90
1059	4d Z48 SG82 Plate 4 Pale Red with Hairlines lettered CB. Lovely B MALTA AP 21 65 CDS , scarce on this issue in GB. Just a hint of a few short perfs at base. (Cat £150+ in GB)	£80
1060	4d Z49 Plate 13 lettered IC. A good C MALTA AU 4 74 CDS . (Cat £75+ 100% in GB)	£35
1061	6d Z57 Plate 6 Emblems Wmk lettered TI. Interesting copy with A25 cancel and has the appearance of a partial Imperf but TI has a wing margin at left. Still unusual and difficult plate. (Cat £250 in GB).	£50
1062	6d Z63 Plate 12 lettered RJ. Good small type A25 cancel . (Cat £300 in GB).	£50
1063	6d Z64 Plate 13 lettered HF. Small type A25 cancel . (Cat £90 in GB)	£25
1064	5/- Z87 Plate 4 lettered CE. Wmk anchor, white paper SG 134. Difficult plate and value, slightly indistinct large type A25 cancel , a few perf faults. Very Scarce. (Cat £3,800 in GB)	£400

SALONICA

1065	½d Z209 Edward VII pair tied to piece by single BPO MR 19 09 Salonica double ring CDS	£80
------	--	-----

SMYRNA

1066	1d Z211 Plate 138 lettered OC. Good F87 cancel .	£40
1067	1d Z211 Plate 160 lettered QD. Good F87 cancel .	£40
1068	2½d Z216 Plate 1 lettered CF. Lovely F87 cancel . (Cat £120 in GB)	£25
1069	2½d Z218 Plate 4 lettered HA. Excellent F87 cancel . (Cat £85 in GB)	£25
1070	2½d Z218 Plate 10 lettered IK. Excellent F87 cancel . Difficult plate. (Cat £85 in GB)	£25
1071	2½d Z219 Plate 18 lettered EL. Excellent F87 cancel . Difficult plate. (Cat £55 in GB)	£20
1072	3d Z221 Plate 9 lettered PA. Good F87 cancel on difficult value and plate. (Cat £70 in GB)	£50
1073	4d Z225 Plate 16 lettered AH. Good upright F87 cancel . (Cat £300 in GB)	£75
1074	4d Z227 Plate 18 Crown Wmk lettered BD. Quite good F87 cancel . (Cat £75 in GB)	£40
1075	6d Z231 Plate 13 lettered ND. Nice copy in deep shade with quite good F87 cancel . (Cat £90 in GB)	£30
1076	6d Z231 Plate 14 lettered MB. Strange piece, stamp is a good colour tied by sideways F87 with sideways the other way SMYRNA JY 2 75 Code A alongside.	£70
1077	8d Z234 SI. Lovely example, brilliant F87 cancel . Listed by Gibbons but uncatalogued. Seldom offered.	£600
1078	9d Z235 IJ. Lovely, superb upright F87 . Very difficult value with this cancel. Ex Firebrace. Cat £450	£400
1079	10d Z236 MJ. Deep Red Brown shade, superb F87 cancel . Ex One missing perf at top. Cat £600	£300
1080	1/- Z237 Plate 7 EI. Excellent wing margin with superb F87 . Listed by Gibbons but uncatalogued.	£100
1081	1d Z249. Very neatly tied to piece by superb BRITISH POST OFFICE SMYRNA AP 4 01 Code A CDS	£20
1082	1d Z249x2 & 40 PARAS on 2½d. Lovely combination REGISTERED SMYRNA 17 AU 00 Code A	£30
1083	½d Z188 & 2d Z191. Tied by a single ring BPO 31 MY 19 Code A CDS with ½d value upside down.	£25

ALL STAMPS LISTED BELOW HAVE BEEN PHOTOGRAPHED
ALL STAMPS ARE WITHOUT DEFECT & FINE USED UNLESS OTHERWISE STATED

STAMBOUL

1084	½d Z296 tied to piece by British Post Office Constantinople S. (scarce) MY 8 86 Code C.	£60
1085	1d Z297 16 Dots. Good STAMBOUL – 4 95 CDS	£20
1086	1d Z297 16 Dots. Difficult small CONSTANTINOPLE S (scarce) MY 6 91 CDS for Stamboul	£40
1087	2½d Z299 lettered KD Excellent difficult S. cancel Stamp a little aged.	£50
1088	½d Z306 Lovely pair with two British Post Office NO 17 94 Code C CDS's	£20
1089	½d Z306 Pair tied to piece,two British Post Office JY 7 91 Code C Constantinople S (scarce) CDS's	£40

SOUTH AFRICA – BOER WAR

1090	1d Z1 tied to piece by ARMY POST OFFICE VR NATAL FIELD FORCE MY 23 1901	£10
1091	1d Z1 x3 tied to piece by ARMY POST OFFICE 43 S.AFRICA NO 24 00 CDS'S	£20
1092	½d Z3 Excellent ZEERUST 7 AUG 00 upright cancel	£25
1093	2d Z5. Good BPO SOUTH AFRICA double ring cancel. Cat £20	£10
1094	Parcel Post Label somewhat stained and aged but Rare usage of 9d Jubilee with Cork cancel with ARMY POST OFFICE FE 14 02 code B JOHANNESBURG. Unusual piece.	£125
1095	1/- Z17 Type Z1 BRITISH ARMY S.AFRICA NO – 00 , some loss of colour. Cat £225	£50
1096	1/- Z17 SG 214 Green & Carmine. Superb colour, SOUTH AFRICA P.O. 50 MR 21 01 CDS. Cat £225	£85
1097	QV 6d x 3 on Rare Parcel Post label. Fascinating and clearly date stamped ARMY POST OFFICE MR 07 02 Code A BLOEMFONTEIN	£95

SUEZ

1098	2½d Z47 Plate 1 lettered BF. Good copy which has large part B02 cancel. (Cat £120 in GB)	£20
1099	2½d Z49 Plate 8 lettered IL. Lovely copy with superb B02 cancel. (Cat £85 in GB)	£20
1100	4d Z56 Plate 12 lettered EJ. Excellent B02 cancel. (Cat £75 in GB)	£20
1101	4d Z56 Plate 13 lettered PJ. Good copy with reasonable B02 cancel. (Cat £75 in GB)	£20
1102	9d Z71 PE Bistre.Excellent B02 cancel , tiny repair. Listed but uncatalogued by SG. (Cat £575 in GB)	£140
1103	1/- Z75 Plate 1 (Actual Plate 2) lettered GG. Lovely copy with excellent B02 cancel. (Cat £300 in GB)	£50

TRISTAN DA CUNHA

1104	½d Edward VII PREPAID cut out square & tied to piece by Small TRISTAN DA CUNHA Circular cancel	£25
1105	½d GV Lovely square full cut PREPAID tied to piece by Blue TRISTAN DA CUNHA	£25
1106	1½d x2 PREPAID Fascinating pair cut out and both cancelled by Black TRISTAN DA CUNHA	£35

ARGENTINE – B32 BUENOS AYRES

1107	1d Z2 Plate 92 lettered CC Excellent Small type B32 , one missing perf	£70
1108	1d Z2 Plate 119 Lovely example with Difficult Large type Blue B32.	£150
1109	2d Z3 Plate 9 Pair lettered RC-RD both well centred with Small type B32 numerals. Superb	£120
1110	3d Z5 PI 4 Emblems wmk. Scarce stamp, Good Upright Small B32. Expertly re-perfed.GB Cat £250	£150
1111	3d Z6 Plate 6 Good wing margin copy lettered EH. Large type 4 VOS B32	£60
1112	4d Z8 Plate 3 lettered LL. No hair lines.Excellent pale red and 3 HOS Small type B32 GB Cat £140	£95
1113	4d Z9 Plate 12 JD. Lovely, in the deep vermilion, superb 4 VOS large B32 cancel. (Cat £75 in GB)	£40
1114	6d Z15 Plate 11 AA. Very good example & colour(pale buff) Large type 4 VOS B32. (GB Cat £140)	£90
1115	9d Z19 Plate 4 TF.Beautiful example & cancel, emblems wmk ,very difficult. B32 3 HOS (GB Cat 600)	£500
1116	1/- Z23 Plate 1 (2) lettered CB. Lovely small type B32 cancel. (Cat £300 in GB)	£80
1117	1/- Z25 Plate 4 lettered PK. Good small type B32 cancel. (Cat from £45, £65 in GB)	£30
1118	1/- Z25 Plate 5 lettered BJ. Good large type B32 cancel. Cat from £45	£30
1119	5/- Z28 Plate 1 BC. Excellent small type B32 , aged and fault above NW corner. (Cat £475, £675 in GB)	£100

BRAZIL – C81 BAHIA, C82 PERMANBUCO & C83 RIO DE JANEIRO

1120	4d Z7 Plate 13 lettered LD. C81 for Bahia very slightly indistinct. (Cat from £50, £75 in GB)	£35
1121	1/- Z18 Plate 5 lettered JH. Beautiful wing copy, with superb C81 for Bahia.	£40
1122	1/- Z18 Plate 7 lettered CJ. Excellent copy of the more Difficult plate on this issue with good C81.	£95
1123	1d Z22 Plate 108 pair GA-GB Excellent C82 for Permanbuco , few perf faults but 1d Plates difficult	£150
1124	4d Z26 Plate 12 lettered HL Superb C82 for Permanbuco but stamps has a defect	£30
1125	6d Z29 Plate 9 Good C82 for Permanbuco but stamp has been reperfed	£40
1126	1/- Z37 Plate 4 lettered LH wing margin. Quite Good C82 for Permanbuco.	£60
1127	4d Z45 Plate 10 lettered HK. Reasonable C83 for Rio de Janeiro. Cat £150 in GB	£50
1128	6d Z48 Plate 8 SE-SF Good pair (right wing margin). C83 for Rio de Janeiro (GB Cat £140)	£90
1129	9d Z52 Plate 4 lettered TI. Very good looking copy, with the very difficult Emblems Watermark , excellent C83 for Rio De Janeiro , trimmed perfs on both sides. (Cat £400, £600 in GB)	£200
1130	1/- Z55 Plate 4 MH Wmk emblems. Cut down wing margin,listed by SG, not Cat. C83 Rio de Janeiro.	£70
1131	2/- Z58 Plate 1 GF. Good colour, C83 for Rio De Janeiro , corner perf missing. (Cat £240 in GB)	£50
1132	5/- Z59 Plate 1 DJ. Two good C83's for Rio De Janeiro , slight perf fault. (Cat from £450, £675 in GB)	£150

**PLEASE REMEMBER THAT FOR MULTIPLE PURCHASES
WE GIVE A DISCOUNT**

ALL STAMPS LISTED BELOW HAVE BEEN PHOTOGRAPHED
ALL STAMPS ARE WITHOUT DEFECT & FINE USED UNLESS OTHERWISE STATED

BRITISH GUIANA

1133 6d Z3. Good example with neat **A03 for Georgetown**. Cat £120 £85

CHILE – C30 VALPARAISO, C37 CALDERA, C40 COQUIMBO

1134 1d Z55 Plate 184 lettered LI. Excellent **C30 for Valparaiso**. This plate not listed by SG £100
 1135 3d Z62 Plate 8 EG & 1/- Z83 Plate 6 DF tied by Excellent **C30 with Valparaiso MR 1 73 Code A PAID** £95
 1136 3d Z62 Plate 10 QL Good part **Valparaiso CDS & C30**, slightly trimmed perfs at right. Difficult plate £100
 1137 6d Z71 Plate 8 lettered DF. Excellent **Valparaiso CDS**, date indistinct & a few nibbled perfs at top. £100
 1138 6d Z74 Plate 12 HC-HD. Superb wing margin pair **CDS and C30 Valparaiso**. Difficult. (Cat £600 in GB) £200
 1139 9d Z80 Plate 4 lettered JL. Lovely pale straw shade. Neatish **C30 for Valparaiso**. (Cat £200, £300 GB) £125
 1140 10d Z81 Plate 1 HF. Lovely copy, with part numeral and part **Valparaiso CDS**. (Cat £275, £400 in GB) £160
 1141 6d Z71 Plate 9 OF & 1/- Z83 Plate 4 SF. Tied to piece, by excellent **C30 and CDS for Valparaiso** £80
 1142 1/- Z83 Plate 5 lettered DJ. Excellent **Valparaiso JY 3 72 code A CDS**, few very slightly trimmed perfs £55
 1143 1/- Z84 Plate 10 HF. Excellent, difficult plate tied to piece by **two C30 numerals**. (Cat £200 GB) £60
 1144 2/- Z86 Plate 1 lettered IF. Goodish **C30 for Valparaiso**. (Cat £240 in GB) £90
 1145 5/- Z88 Plate 1 lettered HD. Superb **C30 for Valparaiso**. Difficult value. Cat from £400 (£675 in GB) £275
 1146 5/- Z88 Plate 2 GJ. Centred a little low to the right, excellent **C30 for Valparaiso**. (Cat £1,500 in GB) £295
 1147 6d Z12 Plate 6 lettered KC. Quite good **3 HOS Blue C37 for Caldera**, perf faults but difficult cancel £50
 1148 9d Z18 Plate 4 Pair SC-SD on piece with single Superb **Blue C37 for Caldera**. Cat £600 (£650 GB) £550
 1149 5/- Z53 Plate 1 lettered DG. Quite good almost horizontal **C40 for Coquimbo**. Scarce £650
 1150 5/- Z53 Plate 2 lettered CJ. Superb **C40 for Coquimbo**. Scarce plate £975

COLOMBIA – C56 CATHAGENA, E88 COLON, F69 SAVANILLA

1151 8d Z14 lettered IK. Superb, Rare stamp used in South America with Excellent **C56 for Cathagena** £350
 1152 4d Z8 Plate 15 PG. Excellent **C56 for Carthagena**, difficult value, straight edge left. Cat £300, GB£475. £195
 1153 1d Z23 Plate 100 lettered KL. Excellent **C65 Carthagena Error**. Difficult on L/E. Centred to right. £125
 1154 4d Z30 Plate 15 LK vermillion. Excellent **C65 Carthagena Error**, very difficult value. Cat £300 (GB £475) £250
 1155 5/- Z44 Plate 2 **C65 Carthagena Error**. Excellent example. Rare. Cat £750 (£1,500 in GB) RPS cert £675
 1156 4d Z54 Plate 15 lettered MH. Superb **E88 for Colon**. Cat from £200 (Cat £325 in GB) £130
 1157 6d Z61 Plate 17 BA. **E88 for Colon**, bottom stroke of E a little weak. Difficult plate. (Cat £180 in GB) £80
 1158 4d Z116 Plate 11 lettered BH. Good example of this difficult **C62 Santa Martha** cancel. Unfortunately has some defects, one is visible from the front. £60
 1159 4d Z137 Plate 16 lettered JE. Very neatly cancelled **F69 for Savanilla**. (Cat from £225, £300 in GB) £150

ECUADOR – C41 GUAYAQUIL

1160 6d Z21 Plate 15 IF. Excellent **C41 for Guayaquil**. (Cat £90 in GB) £70
 1161 8d Z22 Plate 1 CL. **C41 for Guayaquil**. Good example of this difficult value used abroad. Cat £350 £225

MEXICO – C63 TAMPICO

1162 1d Z1 Plate 89 Pair AE-AF with one full & one part **C63 for Tampica**, first we have seen, from top row £400
 1163 4d Z3 Plate 7 lettered QJ Excellent **C63 for Tampica**. Difficult Plate £200

NEW ZEALAND

1164 2/6d SG 178 lettered BE. Very unusual clearly cancelled by **NZ Dunedin 16 AU 95 Squared Circle**. Somewhat aged, but a highly unusual usage. £195

NICARAGUA – C57 GREYTOWN

1165 ½d Z1 Plate 5 lettered PI. Quite good **C57** on this very difficult value used in South America. Cat £90 £70
 1166 1½d Z3 Plate 3 lettered KI. Small part of the small **Greytown NO – 79 code L CDS**. £75
 1167 4d Z9 Plate 16 lettered DB. Lovely **GREYTOWN AP 15 80 CDS** but several faults. (Cat £300 in GB) £40
 1168 4d Z10 Plate 17 TI. Garter wmk **GREYTOWN B DE 15 80 CDS**, cut into at right, **Rare**. (Cat £500 GB) £150
 1169 1/- Z17 Plate 13 lettered KJ. Superb looking copy of this very difficult value, superb **GREYTOWN NO 30 80 CDS**, two perf faults hidden at left where CDS finishes. (Cat £375, £550 in GB) £180
 1170 1/- Z18 Plate 13 TH. **GREYTOWN B 15 JY 81 CDS**, small repair near G of POSTAGE. (Cat £170 GB) £40

PANAMA

1171 3d Z82 Plate 18 lettered FB. Good **C35 for Panama**, difficult value, small fault at SW sq. (Cat £80 GB) £40
 1172 4d Z87 Plate 15 lettered GF. Good wing margin and **C35 for Panama**. (Cat from £200, £325 in GB) £100
 1173 4d Z87 Plate 16 lettered OD. Large part **CDS for Panama**. Good colour. (Cat from £200, £300 in GB) £100
 1174 6d Z92 Plate 9 FI. Attractive wing margin, reasonable **C35 for Panama**, few short perfs. (Cat £90 GB) £35
 1175 6d Z93 Plate 12 NF. Superb **C35 Panama**, difficult plate, few minor perfs faults. (Cat £210 £350 in GB) £130
 1176 6d Z95 Plate 12 SL. Very good used, very difficult value, **C35 for Panama** (Cat £210, £300 in GB) £150
 1177 1/- Z104 Plate 13 lettered OA. Excellent **C35 for Panama**. (Cat from £60, £160 in GB) £40
 1178 5/- Z109 Plate 2 GB. Excellent **C35 for Panama**, difficult plate, centred a little low to left. (Cat £1,500 GB) £475

PERU - C36 ARICA, C38 CALLAO, D87 IQUIQUE, C42 ISLAY, C43 PAITA

1179 9d Z20 Plate 4 GE. Goodish perf wing margin, slightly indistinct but readable **C36 Arica**, difficult £200
 1180 1/- Z24 Plate 4 lettered CJ. Excellent **C36 for Arica**, few perf faults. £95
 1181 1/- Z25 Plate 11 lettered FK. Quite Good **Blue C36 for Arica**. Scarce. £160

PERU - C36 ARICA, C38 CALLAO, D87 IQUIQUE, C42 ISLAY, C43 PAITA continued next page

**ALL STAMPS LISTED BELOW HAVE BEEN PHOTOGRAPHED
ALL STAMPS ARE WITHOUT DEFECT & FINE USED UNLESS OTHERWISE STATED**

PERU - C36 ARICA, C38 CALLAO, D87 IQUIQUE, C42 ISLAY, C43 PAITA - continued

1182	2d Z31 Plate 14 lettered QL. Excellent C38 for Callao . Line Engraved, Difficult value	£80
1183	3d Z35 Plate 19 NC. Superb C38 Callao , difficult, few short perfs at top hidden by pmk. (Cat £80 in GB)	£40
1184	6d Z46 Plate 15 lettered HL. Good C38 for Callao , some faults. (Cat £90 in GB)	£20
1185	8d Z47 lettered BL. Slightly heavy C38 for Callao , difficult value Used Abroad, still on paper. Cat £275	£125
1186	10d Z51 Plate 1 lettered TL. Quite good 4 VOS C38 Callao . (Cat £400 in GB)	£225
1187	1/- Z54 Plate 13 lettered JA. Goodish C38 for Callao , some faults. (Cat £160 in GB)	£40
1188	2/- Z55 Plate 1 PJ. Almost complete NO 8 – Callao Code A CDS . Centred little high. GB Cat £225+	£175
1189	5/- Z56 Plate 1 BH. Superb C38 for Callao , difficult value, some faults. (Cat from £450, £675 in GB)	£140
1190	6d Z46 Plate 14 lettered CC-CD and Peru 20c. Fascinating combination piece with pair of 6d values tied by C38 numeral for Callao the 20c with Peru cancel addressed to New York and with A PANAMA NO 3 75 and NEW YORK 10 CTS NOV 25 Postage Due . Interesting route and combination.	£175
1191	9d Z50 Plate 4 DJ. Excellent, highly unusual with Double ring LIMA LOCAL . Cat £200(GB £300)	£200
1192	Peruvian Local with 1/- Z73 Plate 6 lettered DG, 6d Z67 Plate 11 lettered MC. Rare piece, slightly indistinct but identifiable D87 for Iquique .	£250
1193	1/- Z74 Plate 13 lettered HD. Superb Difficult D87 for Iquique . Defect at right	£95
1194	4d Z85 Plate 15 lettered RG. Superb C42 for Islay . Reduced wing margin copy.	£125
1195	6d Z91 Plate 14 lettered DK. Parts of two C42 for Islay cancels making a complete C42	£95
1196	4d Z104a Vermillion lettered AB. Rare copy, Excellent Blue C43 for Paita , BPA cert, few slight faults.	£500
<u>URUGUAY – C28 MONTEVIDEO</u>		
1197	4d Z8 Plate 12 FD-FE. Excellent pair, single central C28 Montevideo , some slightly short perfs, difficult.	£125
1198	1/- Z21 Plate 4 RI. Wmk Emblems Scarce. C28 Montevideo , trimmed perfs & fault at NE. GB Cat £275	£70
1199	2/- Z23 Plate 1 lettered CJ, 5/- Z24 Plate 1 lettered CA. Superb pair which has been removed from its envelope and put together on piece with lovely C28 for Montevideo . Very Rare Piece . Cat £975	£750
<u>VENEZUELA – C60 LA GUAYRA</u>		
1200	4d Z19 Plate 13 lettered TF. Excellent with superb C60 , quite difficult.	£75

WEST INDIES

ANTIGUA – A02 ST JOHNS

1201	6d Z5. Attractive wing margin, superb A02 St Johns , couple of slight faults hardly detract. Cat £180	£150
------	--	------

CUBA – C58 HAVANA, C88 ST JAGO de CUBA

1202	1d Z2 Plate 86 lettered MD. Good example, Rare L/E plate C58 for Havana previous owner paid £337 Lot 123 ex Michael Goodman.	£275
1203	10d Z12 Plate 1 lettered SK. Good example of this scarce value and 4VOD C58 for Havana , centred to left and a few nibbled perfs on base but a stamp we have not had before. Cat £325	£275
1204	5/- Z17 Plate 1 CA Lovely HAVANA DE 7 70 Code A CDS Trimmed perfs, Very Rare. Cat from £650	£250

DOMINICAN REPUBLIC – C87 ST.DOMINGO, C86 PORTO PLATA, 247 FERNANDO PO

1205	6d Z11 Plate 15 lettered GL. Good looking, C.86 (dot) for Porto Plato , blue registered crayon mark	£225
1206	1/- Z14 Plate 13 lettered NJ. Good C86 (no dot) for Porto Plata .	£190
1207	1/- Z27 Plate 13 lettered OJ. Lovely C87 for St Domingo .	£195

FERNANDO PO - 247

1208	6d Z3 Plate 15 lettered EF. Reasonable example of the Rare 247. for Fernando PO , confirmed by the dot after 47. Cat from £2,000. Ex Michael Goodman.	£450
------	--	------

HAITI – C59 JACMEL, E53 PORT AU PRINCE

1209	1d Z2 Plate 166 lettered QE Good C59 for Jacmel cancel on an unlisted plate in SG.	£100
1210	2d Z4 Plate 9 pair lettered TG-TH Attractive with good single C59 for Jacmel .	£125
1211	1d Z2 Plate 150 II, 3d Z7 Plate 19 SL tied together by single C59 for Jacmel , still on paper	£130
1212	4d Z9 Plate 9 lettered KI. Goodish upright C59 for Jacmel . (Cat £90 in GB)	£30
1213	4d Z9 Plate 13 lettered II. Good upright C59 for Jacmel . (Cat £75 in GB)	£30
1214	4d Z10 Plate 15 NG. Good C59 for Jacmel , straight edge at left, very difficult stamp. (Cat £475 in GB)	£200
1215	4d Z11 Plate 16 lettered RD. Very good used copy with excellent C59 for Jacmel . (Cat £300 in GB)	£120
1216	2d Z34 Excellent upright C59 for Jacmel on this rare value	£150
1217	5/- Z30 Plate 1 lettered GA. Excellent almost upright C59 for Jackmel , one short perf. Cat from £500	£400
1218	1d Z36 Plate 193 Vertical Pair NJ/OJ, 1/- Z51 Plate 13 HL. Very useful registered piece Good E53 for Port-au-Prince , difficult 1d values, 1/- faint cancel but tied all tied to piece. Total Cat £180	£140
1219	1d Z36 Plate 217 PB. Quite good E.53 for Port-au-Prince , this plate not listed in SG	£150
1220	3d Z42 Plate 17 QL. Quite good E53 for Port-au-Prince on this very difficult value.	£100
1221	4d Z43 Plate 14 OG Upright E.53 for Port-au-Prince . Wing margin, 3 slight trimmed perfs above NE sq.	£65
1222	4d Z47 Plate 17 lettered FH. Superb E.53 for Port-au-Prince	£80
1223	8d Z49 Plate 1 DF. Excellent E.53 for Port-au-Prince , Rare value. Few minor perf faults. Cat £350	£250
1224	1/- Z51 Plate 13 lettered FJ. Good E53 for Port Au Prince . (Cat £160 in GB)	£40
1225	5/- Z56 Plate 2 DF Scarce value, neat E53 for Port-au-Prince , quite difficult. Cat £550 (GB £1,500)	£500

ALL STAMPS LISTED BELOW HAVE BEEN PHOTOGRAPHED
ALL STAMPS ARE WITHOUT DEFECT & FINE USED UNLESS OTHERWISE STATED

JAMAICA- A01 KINGSTON, A46 GREEN ISLAND, A47 HIGHGATE, A51 Lu

1226	4d Z4 Good A01 for Kingston but stamp trimmed along base. Catalogued	£80	£30
1227	4d Z79 Quite good example with difficult A46 for Green Island. RPS certificate		£350
1228	6d Z84 Good A47 for Highgate. RPS certificate which says has been enhanced but is genuine		£475
1229	6d Z93 Excellent A51 for Lucea. Difficult numeral with RPS certificate.		£375

PORTO RICO – F84 AGUADILLO, F83 ARROYO, F85 MAYAGUEZ, F88 PONCE, C61 SAN JUAN, 582 NAGUABO

1230	1/- Z12 Plate 10 lettered NE Excellent F84 for Aguadillo. Good wing margin copy.		£100
1231	2/- Z13 Plate 1 lettered JA. Good colour, quite good F84 for Aguadilla, some faults most noticeable at SW corner but still a very difficult stamp. Cat £375		£130
1232	1½d Z34 Plate 3 CA. Very difficult value Used in South America. Identifiable F85 for Mayaguez		£75
1233	6d Z42 Plate 11 lettered SD Good Blue F85 for Mayaguez, trimmed perfs at right. Cat £125 in GB		£60
1234	5/- Z52 Plate 2 lettered GB. Difficult value with Very Good F85 for Mayaguez. Cat £600, (GB £1,500)		£450
1235	3d Z67 Plate 9 lettered FK Difficult value, Very Good F88 for Ponce, a little aged. Cat £75		£50
1236	4d Z70 Plate 15 lettered QH. Lovely colour and superb F88 for Ponce. (Cat £475 in GB)		£225
1237	9d Z76 Plate 4 lettered LC. Quite good F88 for Ponce. Difficult value. Blunt corner perf. Cat £325		£140
1238	10d Z77 Plate 1 lettered IA Lovely copy with Excellent F88 for Ponce. Cat £325		£195
1239	½d Z82 Plate 5 LQ Excellent C61 for San Juan, very difficult value used S.America. One missing perf.		£90
1240	6d Z97 Plate 12 GK Quite Good C61 San Juan. Listed but uncatalogued, some fading.GB Cat £300		£125
1241	9d Z101 Plate 4 OD. C61 for San Juan,wing margin,lovely colour,few short perfs.Cat £200, GB £300		£100
1242	10d Z102 Plate 1 TC Deep Red Brown. Good C61 San Juan, re-perfed along base. (Cat £600 in GB)		£120
1243	2/- Z106 Plate 1 JL Good copy,dull blue, almost horizontal C61 for San Juan. Cat £140 (GB £225)		£100
1244	1/- Z61 Plate 12 lettered JI Excellent Rare 582 Naguabo, ex Michael Goodman . Cat £1,100.		£380

ST THOMAS

1245	3d Z7 Plate 9 SK. Lovely excellent ST THOMAS A FE 14 73 CDS, slightly trimmed perf near SE sq.		£40
1246	4d Z10 Plate 14 lettered LD. Good CDS for ST THOMAS A MY 17 76 PAID. (Cat £110+ 100% GB)		£50
1247	4d Z12 Plate 15 lettered ID. Excellent C51 for St Thomas, few slight perf faults. (Cat £325 in GB)		£35
1248	6d Z17 Plate 6 EL. Very good, deep Lilac shade with goodish C51 for St Thomas. (Cat £185 in GB)		£50
1249	10d Z27 Plate 1 lettered PA. Very good copy with excellent C51 for St Thomas. Cat £275 (GB £600)		£150
1250	1/- Z28 Plate 4 lettered FD. Emblems wmk and thick paper, excellent wing margin and good C51 for St Thomas, couple of minor faults. (Cat £380 in GB)		£100
1251	5/- Z32 Plate 2 EC. ST THOMAS JU 28 76 PAID Code A CDS, re-perfed left, certificate.GB Cat £1,200		£295

For Bahamas and Virgin Islands see Rare and Unusual 1197 and 1200

MAILBOATS

1252	1d Z4 Plate 72 A81 3HOS Rarity E P&G "Handed to Mr.Douglas for use on board 18 Mar 1859"		£125
1253	1d Z22 Plate 115 A83 3HOS Rarity E P&G "Handed to Mr.Perkins for use on board packet"		£125
1254	1/- Z55 A86 lettered SE. Emblems Watermark, Scarce.		£250
1255	1d Z79 Plate 199 EG. 3HOS A99 Rarity F. P&G "To Gilpin for service on the Alexandrian line".		£150
1256	6d B61 3HOS Rarity H P&G 9/16 "handed to Mr.Casson for service on board the "CHINA" North Atlantic Mail Receiver". Cat from £2,000		£750

OVERPRINTS

1257	Cyprus 1d SG2 Plate 217 lettered PK. Good Mint. Cat £24		£15
1258	Cyprus 1/- SG 6 Plate 13 lettered TI. Good Mint which has been heavily mounted which has also caused some rough perfs at top. Rare stamp. Cat £850		£195
1259	Morocco Agencies 1/- Z37. Superb CDS. Cat £20		£13
1260	Morocco Agencies 2/6d SG 38. Superb part Registered British Post Office cancel. Cat £180		£100

RARE, UNUSUAL AND DIFFICULT TO FIND ITEMS

All items are illustrated either on the front cover or back cover or the inside back cover		
1261	Proof - Paris Exhibition 1d DP38(b) Rose GB. Fresh almost 4 M on soft white card. Cat £2,250	£600
1262	2d DP 43 Small Trial TWO PENCE,no letters corners, margins just touching in places.Cat £1,500	£350
1263	1840 1d Black Plate 1b Spec A55(b) Re-entry lettered IB. Lovely 4 margin clearly showing the Re-entry (Statham P 82) with additional mark in margin above. Cat £475	£350
1264	2d SG 13 Plate 3 Pale Blue lettered GD. 4 margin with part of adjoining stamp below, others good but a little close at NE, with Circular Town Cancel BURSLEM JA – 185- CDS. Rare. Cat £3,000	£1250
1265	1848 2d Blue Plate 4 Fantastic Vertical Pair lettered RA/SA. Good to huge margins parts of two adjoining stamps at right and marginal on left.	£165
1266	Unofficial Underprint 2d Plate 14 Spec Pp131 NF. H.H.underprint Unmounted Mint so with full letters, usually they only show partial letters, similar sold for £520 in auction. Cat from £575	£475
1267	1d Plate 158 Spec Pp125 EL. Fine Used Difficult G.E.R. underprint, small tone spots.Cat from £150	£100
1268	1d Plate 174 Spec Pp125 lettered GL. Fine Used Difficult G.E.R. underprint. Cat from £150	£120
1269	QV 1877 4d SG 154 PI 17 Garter Wmk ME. Fine Mint copy,SPECIMEN overprint Type 9. Cat £350	£170

RARE, UNUSUAL & DIFFICULT to FIND ITEMS -continued overleaf

ALL STAMPS LISTED BELOW HAVE BEEN PHOTOGRAPHED
ALL STAMPS ARE WITHOUT DEFECT & FINE USED UNLESS OTHERWISE STATED

RARE, UNUSUAL & DIFFICULT to FIND ITEMS - continued

1270	QV 1872-73 6d SG 123 Spec J79(5) lettered AG. Fine used with variety "without perforations at foot misplaced strike of comb". RPS certificate mentions small fault, hardly visible.	£250
1271	QV 6d SG 125 Spec J81d Plate 12 lettered DF. Fine Used with this distinct variety "12" on left doubled, which is very Rare. Cat £550 QV 16 th 2011	£450
1272	QV 6d on 6d SG 162 Spec K8B(g) State 2 lettered OI. WESTERN – BRIGHTON OC 2 83 CDS. Left Dot only variety, very difficult especially on CDS. Cat £325 QV 16 th 2011	£250
1273	QV 6d on 6d SG 162a Plate 18 lettered SJ. Light CDS which clearly shows the slanting Dots, HILL HEAD MR 1 84 GLASGOW Code A. Cat from £450	£250
1274	QV 1d SG 172 Spec K8(1)i 16 Dots. Excellent example of this Rare Variety. 1) Printed both sides, 2) Reverse Inverted, 3) Wmk Inverted. Fabulous combination. Cat £1,000	£500
1275	Army Official QV ½d SG 041a. Very Fresh, lightly mounted mint clear variety "I" for "L". Cat £300	£250
1276	I R Official Edward VII 1/- SG 024. Lovely VFU, parts two light CDS. Wenvoe Certificate. Cat £900	£495
1277	Office of Works Official Edward VII 2d SG 038. Superb copy tied to piece by small part 03 CDS well away from King's profile. Wenvoe Certificate. Cat £450	£250
1278	Office of Works Official Edward VII 2½d SG 039. Very attractive Fine Used with light London AP 30 03 squared circle. Wenvoe Certificate. Cat £675	£350
1279	QV Jubilee 2d SG 199 Green & Vermilion. Superb SLOANE ST. 179 AP 14 00 CodeC CDS. Cat £260. RPS certificate.	£230
1280	QV 1883 2/6d SG 178 lettered MF. Lovely copy clearly and neatly postmarked CANCELLED C.S.C. for Civil Service Committee. Scarce postmark and the first one we have seen.	£250
1281	1902 St Andrew's X Edward VII SG 218(bw) Rare full Booklet Pane Inv Wmk, PORTLAND ST. A JA 28 07 W CDS's. Blue crayon mark for Registered and slightly aged but not often seen. Cat £550	£175
1282	1902-10 Edward VII De La Rue 1½d SG 221 Spec M8(1) Dull Purple & Green. Lovely Block of 4 with PORTSMOUTH OC 19 05 CDS's. Cat £125	£60
1283	1902-10 Edward VII De La Rue 5/- SG 263 Bright Carmine. Horizontal Pair each with neat full VIGO ST. MR 19 06 CDS's. Cat £440	£250
1284	1911-12 GV Mackennal ½d SG 322 Die A Green. Very fine lightly hinged mint Interpanau Pair showing partial double printing through halfpenny and lower parts of design.	£250
1285	1911 GV Mackennal 1d Die 1A Crown wmk. Lightly mounted mint with design totally misplaced leaving only half the stamp printed. Very unusual, some stray ink marks. See also item 781	£195
1286	1913 GV Multiple Cypher ½d SG 397 and 1d SG 398. Superb lightly cancelled CDS Pair with excellent perfs for these which were largely in coils for machines. Cat £375+	£295
1287	1924 GV ½d SG 418a wi S/W Block Wmk Inv. U/M, excellent perfs & centring, very scarce Cat £650	£475
1288	1935 GV 1/- Spec N45(5) Very Scarce Deep Fawn Brown, Block Wmk. U/M control W35	£250
1289	Ascension 2/6d Z33a SG 316 Dull Reddish Purple. Beautiful upright ASCENSION 11 AU 13 Code B CDS. Very Rare. RPS Certificate. Cat £1,800	£1600
1290	Constantinople 1873-80 2½d SG 138 Plate 2 Blued paper EF. Excellent with neat "C" cancel, White Paper Plate 2 for comparison. Very Scarce especially Used Abroad (Cat £1,650 in GB)	£1200
1291	Egypt 1d ZA4 x 2 and ½d ZA2. Very Rare trio with the extremely Rare ½d Green all tied together on piece by 3 BRITISH POST OFFICE EGYPT SP 23 82 CDS's. Cat £1,050	£600
1292	Gordon Relief Souakin 1/- Lilac & Green GB SG 196 EA. Very Rare stamp with excellent colour and clear SOUAKIN 4 AV 85 CDS. Liverpool Arrival Date Stamp. The first one we have seen.	£850
1293	Stamboul Edward VII GB SG 333 Aniline Scarlet. Superb example tied to piece by BRITISH POST OFFICE NO 11 13 STAMBOUL CDS. The first one we have seen used in Stamboul. BPA Cert.	£400
1294	Colombia 5/- Z147 Plate 2 lettered CF. Excellent example and cancel F69 for Savanilla (Barranquilla). Rare so fine. Cat £1,500 in GB	£750
1295	Nicaragua 5/- Z21 Plate 2 lettered AI. Lovely example of this Difficult value cancelled by two or three small identifiable GREYTOWN JY 1 80 CDS (Cat £1,500 in GB)	£475
1296	Panama 1/- Z105 Plate 13 PE. Beautiful perf wing margin, superb C35. Scarce value (GB Cat £550+).	£400
1297	Bahamas 1/- Z5. Brilliant example of this Very Rare stamp with lovely A05 Nassau, perfs added at left but only obvious from the back. Cat £2,750.	£1950
1298	Cuba 5/- SG Z17 Rose Plate 1. Superb almost upright C58 Havana. Very Rare so fine. RPS Cert	£800
1299	Haiti ½d Z1 Plate 5 Excellent and Rare Block of 4 EM-EN/FM-FN of this value used abroad with a single C59 for Jacmel cancelling all four stamps. One missing perf.	£600
1300	Virgin Islands 6d Z3. Very Rare perf wing margin, readable A13 Tortola, vertical crease. Cat £1,800	£600

OUR FULL COLOUR ILLUSTRATED LIST of
ALL the 1d RED PLATES IMPERF & PERF from
PLATE 1B TO R17 Specialised A2 to C13 inclusive is available separately

ERIC PAUL

STAMPS

Descriptions

List N° 85

2^D SG 14 Plate 4



1265

PARIS
EXHIBITION
PROOF



1261

2^D DP 43
NO LETTERS
IN CORNERS



1262

2/6^D SG 178
CANCELLED CSC



1280

5/- Z147
Plate 2
F69 SAVANILLA



1294

5/- Z17
Plate 1 C58 HAVANA



1298

5/- Z21
Plate 2
NICARAGUA
GREYTOWN CDS



1295

2 1/2^D SG 138
Plate 2 BLUED PAPER
CONSTANTINOPLE



1290

EGYPT
BRITISH POST OFFICE EGYPT CDS's



1291

PANAMA
1/- Z105
Plate 13



1296

ASCENSION
2/6^D Z33a CDS



1289

VIRGIN ISLANDS
6^D Z3
A13 TORTOLA



1300

P O BOX 44 MARPLE CHESHIRE ENGLAND SK6 7EE
TEL: +44(0)161 427 2101 WEB SITE - www.ericpaul.co.uk
EMAIL: info@ericpaul.co.uk