

# ERIC PAUL STAMPS

Established 1971

List N° 85

## Illustrations

BURSLEM CDS



1264

Plate 1b  
RE-ENTRY



↑ 1263

2<sup>D</sup> Spec Pp 131  
Plate 14  
H. H.



1266

6<sup>D</sup> SG125  
Spec J81d



1271

5/- SG 263 Pair



1283

1/2<sup>D</sup> SG 041a  
I FOR L



1275

1/2<sup>D</sup> SG 418a wi  
Sideways  
Inverted



1287

1/- SG 024



1276

1913  
Multiple Cypher Set



1286

GORDON  
RELIEF  
SOUAKIN  
1/- SG 196



1292

BAHAMAS  
1/- Z5



1297

P O BOX 44 MARPLE CHESHIRE ENGLAND SK6 7EE  
TEL: +44(0)161 427 2101 WEB SITE - [www.ericpaul.co.uk](http://www.ericpaul.co.uk)  
EMAIL: [info@ericpaul.co.uk](mailto:info@ericpaul.co.uk)

**IMPRIMATURS - PROOFS**  
 1<sup>o</sup> SG 172 PLATE 17    1/2<sup>o</sup> SG 187 PLATE 7?    SG 191 COLOUR TRIAL PURPLE

1<sup>o</sup> LILAC ON BUFF

**CANCELLED**  
 2/2<sup>o</sup> SG 201 K31 (t)



1



2



3



5



CANCELLED TYPE 14 U/M

4

4<sup>o</sup> Battle of Britain

FARRAR BELL

6<sup>o</sup> GREY GREEN N<sup>o</sup> 20

**PROOFS**

SG 619    1960 GLO    SG 620



Grey Green. No. 20



SG 3 PLATE 1A

6

1040

SG 2 1b

7

1<sup>o</sup> BLACKS

8



L



L

H



I

E



G

S



A

12

SG 2 PLATE 3

9

SG 2 4

10

SG 3 4

11

SG 2 PLATE 5

2

SG 2 PLATE 5 STATE 1

8



K



I

L



F

S



B

N



F

T

F

SG 2 PLATE 6

13

SG 2 7

14

SG 2 8

15

SG 3 9

16

SG 2 10

17



L



L

M



C

O



H

B



A

L

G

PLATE 10 RED MIX

SG 5 PLATE 1 RED MIX

SG 5 2 BLACK MIX



J

K



F

C

B



C

23

24

25

1<sup>st</sup>  
RED  
SG  
No's

SG7 PLATE 7    548    548a    549    5410    5412 PLATE 44



2<sup>nd</sup>  
BLUES

5413 26 PLATE 3    575 NORWICH 27    5414 PLATE 3 28    5414 PLATE 3 29    5415 PLATE 3 MX 30    5414 PLATE 3 31



A

5414 32 PLATE 3 BELFAST E B 33 J L 34 V O 35 D B J 36 K L  
5414 PLATE 3    5414 PLATE 3    5413 PLATE 3



C

37 K RE-ENTRY SPEC ES 15b PLATE 4 ↓ ↓  
38 PLATE A    39 K LP    40 E AD F



C



G

E

41 D ↑↑↑↑ SG14 PLATE A    42 A B 43 C D SG 23 PLATE 4



D



I

E



SA

SG 17    42 N B 43 D SG 20A    44 SG 21    45 SG 19    46 SG 18 UNUSED    47 SG 24 P. 12    48 SG 26    49 SG 27    50 SG 29    51 SG 30



SG 21 44

SG 22

SG 23a

SG 24 P. 12

SG 26

SG 27

SG 29

SG 30



52

53

55

56

57

58

59

60



61 62 63 64 65 66 67 68 69

SG 22 SG 17 P. 4 ↓ VAR SG 20 PALE BLUE SG 19 P. 4 MARIE SG 20a P. 5



70 71 73 72 M 74 C

1854-58 SG 23 RATE 4 SG 23 P. 4 SG GREENOCK 23A EXPERIMENTAL SG 34 DOUBLE 'L'

20 STARS



SPECIALS

11-SG 56 20 SG 15 P. 4 75 11-SG 54 76 100 SG 57 77 60 SG 58/9 78

EMBOSSSED



1847-54 EMBOSSED ISSUES

80



79 81 82 83 84 85 86 87 88

PLATE 71

10 PLATES C.D.S.



PLATE 102 111 112 118 119 122 124 130



89 90 91 92 93 94 95 96

PLATE 134 140 151 152 156 158 167 174



97 98 99 100 101 102 103 104

PLATE 177 180 184 187 200

SKAFFESBURY 203



110

PLATE 105 207 106 207 107 200 TORQUAY 108 222 109

216 INVERTED B&K

PLATE 122 LNERPOOL



111

PLATE 93 LIGHT IRISH 112 CANCELS

113 FINTONA 114 157



115

PLATE 123 HULL

PLATE 99 EDGORTHSTOWN IRISH



117

118

PLATE 148 LEEDS

PLATE 149 EDINBURGH

PLATE 114 119 127 123



122

PLATE 215

PLATE 130 119

134

140

120

142

145

124

172

125

196

212



126

135

127

128

129

130

131

132

133

134

PLATE 109



PLATE 143



PLATE 174



10  
PLATES  
MINT  
NOT  
PLUGS  
139

PLATE 115



136  
138

PLATE 72 VARIETY ↓ 122 BLUE FOREIGN



PLATE 136



139 MISPLACED WMK



137

PLATE 197 G.22 206 TORN FROM SHEET?



140 PLATE 211



141 INV. WMK 208 STM Perfin



142 PLATE 106



143 PLATE 13

152

144

145

146

PLATE 4

5

11

12



147 PLATE 9 STATE 1

STATE 2

STATE 2

STATE 2



148

149

150

151

PLATE 9 STATE 3

12

PLATE 1

3



153 206

154 224

155 114

156 169



PLATE 8

158

151 159

76 160

103

20 161

9 162

124 163

131 164



2 1/2 PLATE 16 INVERTED WMK

165

166

167 198

168 TYPE 9 169

TYPE 9 170

171

TYPE 9 172



174

173

175

176

177

11-SG71

90-SG87

90-SG110 P.A

90-SG111 P.A

21-MILKYBLUE SG120B

21-BROWN SG121

60-SG125 PLATE 12



178

179

181

182

185

186

187

30-SG103 PLATE B COVENT GARDEN MARKET

10-SG171(2) 14-DOTS

60-SG194

11-SG214



180

200

2 1/2-SG141 PLATE 16

2 1/2-SG17

30-SG144 19

199

40-SG152 15

40-SG153 15

206

40-SG154 17

1/2-SG165

10-SG166

1 1/2-SG167



190 PLATE 2

51-SG127

191 PLATE 4

51-SG134

192 PLATE 4

216-SG178

193 51-SG180

194 19-SG183

195 101-SG183a Pair

196 197

198



199

30-SG191

200 20-SG189

1 1/2-SG198

201 30-SG192 4

202 30-SG103 8

203 11-SG150 12

204 1/2-SG164

205 1 1/2-SG167



204

205

208

209

210

211

212

213

10-SG170 14-DOTS

2 1/2-SG190

60 ON 60 SG162

10-SG166 FIRST DAY

1 1/2-SG167 FIRST DAY



214

215

216

217

218

2° SG168 FIRST DAY

S.M.P.

PLATE 143  
TREASURY ROULETTE?

PLATE 58  
PRIVATE ROULETTE?

ARCHER PERFI 14  
PLATE 104

3° PROPAGANDA  
FORGERY



219  
210

221

222

223

224

2° SG02

1° SG03

6° SG04

1/2° SG013

2 1/2° SG014

1/2° SG017

6° SG018

1/2° SG031

OFFICIAL



225  
1/2° SG041

226  
1/2° SG042

227  
1° SG043

228  
1° SG043A

229  
2 1/2° SG044

230  
1/2° SG020

231  
1/2° 021

232  
1/2° SG048

1° SG049

ARMY



233  
1° SG074

234  
1/2° SG0101

235  
1° SG0102

236  
1/2° SG0107

237  
1° SG0108

238  
1/2° SG041VAR

239  
1° SG037

240  
2 1/2° SC104A

241

GOVT PARCELS



242  
2° SG070

243  
1° SG072

244  
1° SG074

245  
2° 076

246  
1° 08A

247  
1 1/2° SC10103

249

250

GOVT PARCELS



251  
SGT2 PLATE 1

252  
PLATE 20

253  
PLATE 18B  
GWR

254  
123  
B B + CO

255  
150  
PARC 3

256  
20 PL 15  
I + RM

257  
2 1/2° SG139  
PLATE 1  
R F + CO

1° SG163  
PL 13  
HANDL

258



258  
1° SG172  
B.D. + R

259  
101-SG183  
H+B AND LATE FEE

260  
1° BLOCK  
STATIONERY  
OFFICE

261  
1/2° SG215/6  
G.N.R.

262

263  
1° SG172/3

264  
GWR

265



266

267

268

269

270

270

270

270

270



PLATE 164 35 ADMINSTER 92 BOLTON 104 BRACKLEY PLATE 168 107 BRADFORD PLATE 48 152 BURTON ON TRENT PLATE 136 250 DONWORTH PLATE 83 275 EPPING PLATE 102 290 PALMOUTH



271 397 BUCKDEN 272 511 MARKET HARBOUROUGH PLATE 119 273 MARLBOROUGH PLATE 145 274 559 LYNEY VAR. PLATE 202 275 OLDHAM 276 PLATE 108 277 278 PLMOUTH



PLATE 16 279 646 RIPON 280 63 280 63 WATH VARIETY 281 814 for TRURO 282 932 ESCRIK 283 945 RUNCORN (SCARCE) 284



20 IMPERF PLATE A QA-QC 930 YORK



324 PLATE 177 4PS694 INVERTED WATERMARK D94 WOODFORD BRIDGE D96 293 WEST DRAYTON F24 WHITLAND 294 324 GREEN STREET KENT 295 K26 BEKHILL



301 PLATE 75 302 PLATE 106 303 118 296 122 297 C10 RATE 59 298 146 299 177 300 681 CASTLETOWN



304 305 306 307 308 309 310 311

SPEC C10  
PLATE 56

PLATE 119

100

SC159  
PLATE 21

SHANKLIN



Niton, Isle of Wight,  
1<sup>st</sup> March 1928



SEARCH

L45

9  
317  
318  
319

312  
DUBLIN MX

313  
DUBLIN MX

314  
PLATE 203  
CALLUNA

315  
SPEC C1  
PLATE 179  
CALLINASLOE

PLATE 158  
BALLYMAGA 316



321 PLATE 123  
65 BELTURBET

322  
LAVENDER TINTED PAPER

323

324

325

316



PLATE 169  
BLACKROCK

317



PLATE 204  
BOYLE

305G114  
PLATE 17  
90-CANIR



328 126 CANIR

329 142 CLONMEL



330 PLATE 11

331 305G102  
PLATE 5



332 333

Ryde, Isle of Wight (RD)  
4<sup>th</sup> September 1896.  
Type B2.



Prepaid threepence, the rate for a  
parcel 1-2lbs, 1<sup>st</sup> May 1896.



Bembridge (BEZ),  
(under Ryde, Isle of Wight).  
12<sup>th</sup> July 1901  
Type C4



Prepaid ninepence, the rate for a  
parcel 7-8lbs, 1<sup>st</sup> June 1897.



Ventnor, Madeira Road,  
Type C4  
12<sup>th</sup> November 1903

sub office



Prepaid fourpence, the rate for a  
parcel 1-2 lbs, 1<sup>st</sup> June 1897.



310

PLATE 213  
DOWN

80  
DROGHEDA

PLATE 74  
DROMORE

P. 125  
OUNFANAGHY

DUNMANNAY

P. 184  
ENNIS

P. 198  
KILKENNY

C10 PLATE 60  
LARNE

I  
R  
I  
S  
H  
  
P  
O  
S  
T  
M  
A  
R  
K  
S

I  
R  
I  
S  
H  
  
P  
O  
S  
T  
M  
A  
R  
K  
S



334 PLATE 206 LURGAN  
335 325 MATMOOTH  
336 P. 125 334 SLAN. TINT MONAGHAN  
337 PLATE 70 338 RATHDRUM  
338  
339 9P54110 SUGO  
340 11-5472 STRABANE  
341 428 for THOMASTOWN



342 3D 54143 PLATE 12 THURLES  
343 PLATES 4 (DIFFERENT) 5  
344 6  
345 7  
346 8  
347 9  
348 10  
349



350 2160 54179 KILMAHOCK  
351 1/2P 54213  
PLATE 159 25  
351 41 CB PLATE 8 41  
44 C1 PLATE 172 44



352 PLATE 151  
353  
354 PLATE 16A  
355  
356  
357 PLATE 157  
358



51-54181 EXPERIMENTAL CANCELLATION 362 PLATE 107 46  
C1 PLATE 194 ROLLER ORANGE BROWN 364 51  
C10 PLATE 55 CHARLES RIDEOUT  
PURVIS TYPE 26 RAGGY GIF D



367 6 EDGWARE 369 8 Buse/Burck 371 13(A) 372 20 373 21 366 27



368 369 370 371 372 373

LONDON  
SUBURBAN  
L

L  
O  
N  
D  
O  
N

4  
363

JOZON

SBCRBAN



374 70 TYPE 2  
375 73 TYPE 4B  
376 95 TYPE 2  
377 97 TYPE 2  
378 42 B TYPE A  
379 LATE FEE  
380 DUBLIN LATE FEE  
381



382 C10 PL 34  
383 R. 99  
384 101  
385 138  
386  
392 TOO LATE  
395



387 388 389 390 391  
195 197 199



396 PAULTON UDC 397 398



403  
406  
405  
409  
RATE 186

NEWSPAPER BRANCH CANCELS  
146 146 191



401 RATE 199  
402  
408  
407  
404  
RATE 20A  
RATE 184



EPINGHAM (UNDER NORWICH) D62294

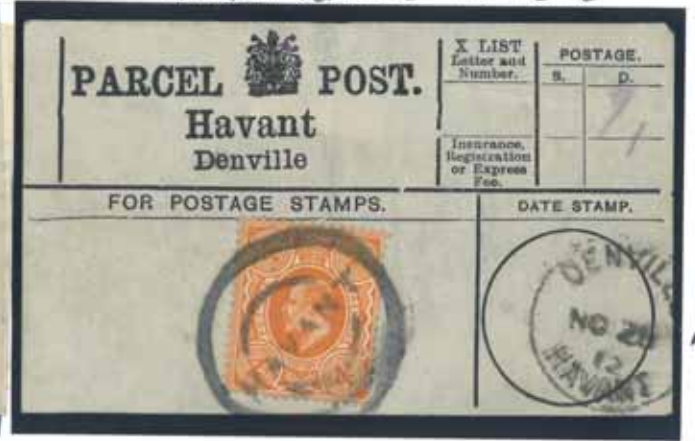


HAVANT MR 5 07



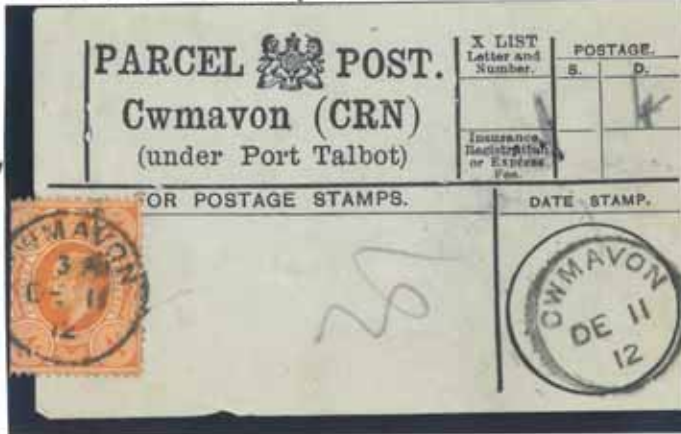
→  
410

HAVANT DENVILLE NO 28 12



→  
411

WALES CWMAVON DE 11 12



→  
412



→  
413  
P  
A  
R  
C  
E  
L  
P  
O  
S  
T  
-  
L  
A  
B  
E  
L  
S

GN 3<sup>p</sup>+4<sup>p</sup>+1/- ARMY P.O. R.A. 1 10 06 15



→  
414

ARMY P.O. RA 28 AP 15 4<sup>p</sup>+1/-



→  
415

GN 4<sup>p</sup>+1/- ARMY P.O. 17 AP 18 5.40



→  
416

1/- Field P.O. 30 JY 16 TA 3



→  
417

PORT SAID



→  
418



419

420 421

PORT SAID 1/2<sup>p</sup>+1<sup>p</sup>



PORT SAID 2<sup>p</sup>



→  
422

RECORDED  
423  
TOLUN  
428



427

PAGE  
51066  
430



431

433



RAILWAYS  
443



436 T  
POST



445 446 447 448 449 450

CARYAIRS JUNC.

LEWES

LINCOLN ST.

ST LEONARDS ON SEA  
STATION OFFICE

RUGBY STATION

SWANLEY JUNCTION

RED HILL STA OFF

LEWES STATION OFFICE



RAILWAYS

451 MIDDLETON JUNCTION

452 Highd SORTING C.

453 CONTINENTAL NIGHT MAIL

454 CONTINENTAL NIGHT MAIL

455 NORTH OF SCOTLAND S.C.

456 SOUTH WALES S.T. NIGHT UP

457 G.S.W. Puffin OWN NIGHT

458 LISMORE R.S.O. T.P.O.



RAILWAYS

459 CHESTER STATION OFFICE

461 UP SPECIAL G. T.P.O.

462 SOUTH WALES T.P.O. NIGHT MAIL EAST

464 LONDON HOLYHEAD T.P.O.

466 HIGHLAND T.P.O. UP SOUTHERN SECTION

WAYS



460 EXETER and TORRINGTON S.C.

468 ABERYSTWYTH - SHREWSBURY S.C.

470 IPSWICH SORTING TENDER

SHREWSBURY TAMWORTH R.137 T.P.O.



472

473

1/2 PR.3. R 4

REGISTERED CDS 6/5G70 1PSG40

474 3DAN 3/5G159(21) REGISTERED

475 2/5G141(15)9

SUPERB

476



478

483

3DAN 3/5G159(21) BADFORD 6DAN 6/5G162(18) RED REGISTERED REGISTERED 205G168A BLUE REGISTERED

477 3DAN 3/5G159(21) REGISTERED

69 BICESTER



480 545 NEWCASTLE UPON TYNE

484 569 NORTH ALLERTON 485

486



487

# SCOTTISH POSTMARKS

SG35 434  
LAMPETER (CARD, WALES) PLATE 88 15 ARDROSSAN

BL R/ENTRY  
PLATE 88 131  
BLK of 4 EDINBURGH

488 ↗



↖ 489



↑ PLATE 43 113 DUNMERLINE



↙ 490

491

PLATE 81 173 HAMILTON

PLATE 170 339 WICK

↗ 492



↖ 493

PLATE 157 IRISH

2054 23  
PLATE A 11 ANNAN

PL. 49 2  
ABERFELDY

PL. 82  
AOSYNE

PL. 150  
ALLOA

PL. 96  
ANNAN

↗ 494



495

496

497  
C1 PL. 183  
COMAR

498  
PLATE G1  
DUNNETT

499  
139  
FALKIRK

20  
SG 119  
PLATE A ANNAN

PL. 99  
ARRORTH

PLATE 70  
40 BEITH



PLATE 122  
146  
FORT ROSE

SG 18  
C1 PL. 184  
GIMTOWN

PLATE BB  
185  
INVERCADDON

217  
LARGS

502  
PLATE B3 232  
LOCKHILLHEAD

503

504  
PL. 105  
258 MORVERN

505  
SPEC. 1  
PLATE 196  
335 WATTEN



506  
PLATE 78 (ISLE OF MULL)  
325 TO BERMUDY

507  
PLATE 55  
34A  
LASSWADE

508  
10 PLATE 130  
359 DREM

C1 PLATE  
171 STATE 1  
363 LIBERTON

510  
CB PL. 34  
MADELEINE  
SMITH

105635  
CB PLATE 35  
LEITH 221

511  
CB  
PLATE 40  
LEITH 221



512

514

515

516

517

518

519

## SCOTTISH POSTMARKS



SCOTTISH POST MARKS

PLATE 136  
298 ROTHSAY



C10 PLATE 66  
LINTHGHON  
AU 9 1861 CBS



SG35  
PLATE DUNDEE EXPERIMENTAL



C10 PLATE 52 EDINBURGH ROLLER



520  
2A SG 33  
EDINBURGH ROLLER



521  
DUNDEE DOTTED CIRCLE



522

EDINBURGH DOTTED CIRCLE



523

EDINBURGH DOTTED CIRCLES



524  
GLASGOW NPB



525  
PORTOBELLO CDS



526

527

528



533

SOUTHEASTERN D.O.



531  
PLATE EDINBURGH  
206 DOTTED CIRCLE



306 G103 PLATE 6  
GLASGOW ROYAL EXCHANGE



532

530

COVADDENS

529  
STRAITHLANE

ROSNEATH ONICH ONICH

ST ROLLOX

535



DUKE ST. LETH

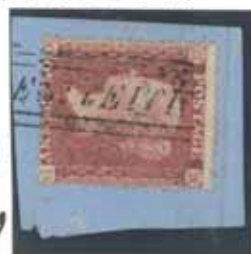
DUKE STREET

536  
RUE END STREET

537  
GLENBARR

539  
BLACKHALL STREET LHANBYDE

540



543

544

545

CASTLE STREET

QUEEN STREET

541  
NICHOLSON STREET

542

PITT STREET

GALLOWGATE W.O.



548

549

550

546

547

MAR-TIME

CAPE PACKET  
6PSG147 PL.16



551

ABINGDON TYPE VIII



552

BRADFORD TYPE III



553

BISTOL TYPE Vb



554

CHESTER TYPE Vb



555

GATESHEAD TYPE II



556

HUDDERSFIELD TYPE II



557

10SCA18  
C1 PL.178  
MICA SW



560

CHILTENHAM TYPE II



---DINGTON  
UDC

563

MANCHESTER TYPE II



559

10SPEC C10 RATE 42 Hull



558

PLYMOUTH TYPE II IMP  
10SA 21  
SPEC CA PL.4



561

562



C1  
PLATE 162  
RG STATE 2  
HULL  
TYPE A

565

IMPERF PL.165 Hull



564

MANCHESTER TYPE C RECUT

SPEC C9 PLATE 47 LEAMINGTON



566

IMPERF RATE 167



567

C8 PLATE 33



LIVERPOOL  
REGISTERED

568

TYPE 5B MANCHESTER



TYPE DSB MANCHESTER

569

TYPE DA MANCHESTER



TYPE SA MANCHESTER



NOTHAMPTON 1ST RECUT

570

OSWESTRY SPEC C10

571

2<sup>nd</sup> PERIOD PLYMOUTH

572



573



574



575



576

S-A-R-V-S-D-D-P-L-E-X

SHREWSBURY TYPE C2

WORCESTER ORIGINAL

WORCESTER 1st RECUT

WORCESTER 2nd RECUT

577



WORCESTER 3rd RECUT

578 WORCESTER 3rd RECUT

579 NEWRY ENGLISH TYPE

580

581



TULLAMORE IRISH TYPE

CORK ENGLISH TYPE

DERRY ENGLISH TYPE

587

582



GALWAY ENGLISH TYPE 585

KILKENNY IRISH TYPE

LIMERICK ENGLISH TYPE

LIMERICK IRISH TYPE

KINGSTOWN IRISH TYPE 588

MULLINGAR IRISH TYPE 589

590 TYPE A3 DUBLIN

591 DUBLIN TYPE A1



583

DUBLIN TYPE A7

BELFAST ENGLISH TYPE

BELFAST IRISH TYPE



596 IRISH SPOONS

BELFAST IRISH TYPE 597

CLONMEL IRISH TYPE

598

IRISH SPOONS



599

600

PLATE 105 SHREWSBURY 121 BIRMINGHAM 157 157 BIRMINGHAM 182 LONDON 190 LIVERPOOL 204 BIRMINGHAM 206 206 S4197E LONDON



WALLES

601 511 EXETER CENTRAL  
 602 51-S4180 BERNICK STATION  
 603 51-S4181 DEFFORD STATION  
 604 101-S4183 BERNICK STATION  
 605  
 606  
 607  
 608 RATE 79 BLUE 108 CARMARVON  
 609



WALLES

610 RATE 92 181 ABERGEELE  
 611 RATE 83 763 SWANSEA  
 612 C3 PLATE 2 763  
 613 113 CARDIFF  
 614 130 CARDIFF  
 615 138 NEWTOWN/NEWPORT  
 616 140 LLANELLY

WALLES



616 122 CARDIFF DOCKS  
 617 168 NEWPORT  
 618 165 LANWYST NEWPORT  
 619 171 NEWPORT  
 620 192 CARDIFF  
 621 202 LLANELLY

WALLES

615 103 S4166 FIS PENYCHM CLOTH CANCEL  
 622 210 NEWPORT  
 623 208 WREKHAM  
 624 216 COLWYN BAY  
 625 216 S4178 CARDIFF DOCKS  
 626 216 S4178 CARDIFF DOCKS  
 627 216 S4178 CARDIFF DOCKS  
 628 216 S4178 CARDIFF DOCKS  
 629 216 S4178 CARDIFF DOCKS  
 630 216 S4178 CARDIFF DOCKS  
 631 216 S4178 CARDIFF DOCKS  
 632 216 S4178 CARDIFF DOCKS  
 633 216 S4178 CARDIFF DOCKS  
 634 216 S4178 CARDIFF DOCKS  
 635 216 S4178 CARDIFF DOCKS



SHROPSHIRE

633 60 S4194 BN LCH-V-CIBAU  
 636 1/2 M1(3)  
 637 1/2 S4218a  
 644 1 1/2 S4222 M8(2)  
 645 1 1/2 S4224 M9(2)  
 646 30 S4232a M20(2)  
 647 30 S4233 M20(3)



SHROPSHIRE

648 40 S4236 M23(3)  
 649 40 S4238 M24(2)  
 650 60 S4245 M31(1)  
 651 90 S4250 M33(1)  
 652 90 S4251a M40(3)  
 653 100 S4254 M42(1)  
 654 100 S4255 M43(2)  
 655 11 S4257 M45(1)



648 649 650 651 652 653 654 655

1° SG 219 CANCELLED 8 JUL 1906

1° SG 220 CANCELLED 8 JAN 1907 PA CIRCULAR PERFINE

ORZOW 1906

CANCELLED



639

638

11- SG 257 OCT

216 SG 262 CHALKY

51- SG 263 Blue (Parcel Post?)



640

641

642

643

216 SG 262 MA9(2)

30 M3(6)

51- SG 263 22 MAR 1906



CHALKY



658

1° SCARLET (PROVISIONAL) 1/2° and 6° S.H. 656



1911 P. 14

1/2° SG 279 MA(1)

1° SG 280 657

1° SG 281

216 SG 284 22 M10(2) 659

30 SG 285 M37(1) 660

4° SG 286 661

2° SG 290 662

1 1/2° SG 289 663



50205 670

664 2° SG 292

665 5° SG 293

666 6° SG 297

667 6° SG 299

668 6° SG 301

669 6° M37(1)

671



R 50205 670

672 216° SG 317 M50(4)

673 10° SG 309 MA9(2)

674 10° SG 311

675

677 11- MA7(4)

678 11- SG 314 MA7(5)

679

Sidcup Thimble CoS



H 50205 670

684

680

681

682

683

1<sup>2</sup> SG222 2<sup>0</sup> SG227 1<sup>2</sup> SG22A 5G230 SG232 SG233 SG234 SG236a SG236a  
 1<sup>2</sup> M8(2) 2<sup>0</sup> M12(1) 1<sup>2</sup> M9(2) 2<sup>2</sup> M16(2) 3<sup>0</sup> M19(1) 3<sup>0</sup> M20(3) 3<sup>0</sup> M20(5) 4<sup>0</sup> M24(1) 4<sup>0</sup> M24(1)U/M



DE LA RUE

DE LA RUE

685 686 687 688 689 690 691 692 693



4<sup>0</sup> SG241 M25(3) 5<sup>0</sup> SG24A M29(2) 7<sup>0</sup> SG249 M37(1) 9<sup>0</sup> SG251A M40(2) 11- SG257 M45(1) 1<sup>0</sup> SG269 M3(3) 1<sup>0</sup> SG270 M3(5) 1<sup>0</sup> M6(4)

PERF 14

701

PERF 15x14



694 695 696 697 698 699 700  
 1<sup>0</sup> SG280 M7(1) 1<sup>0</sup> M7(5) 2<sup>3</sup> SG284 M18(3) 2<sup>3</sup> SG284 M18(3) 3<sup>0</sup> M22(4)U/M 4<sup>0</sup> SG286 M27(1) 4<sup>0</sup> SG286 M27(1)U/M

PERF 15x14

SOMERSET HOUSE



1<sup>0</sup> SG290 M10(5)U/M 1<sup>2</sup> SG289 M10(7)U/M 2<sup>0</sup> SG290 M13(1)U/M 2<sup>0</sup> SG292 M13(4)U/M 5<sup>0</sup> M30(4)U/M 5<sup>0</sup> M30(5)U/M 6<sup>0</sup> SG295 M33(1) ROYAL 6<sup>0</sup> SG298 M33a(3)U/M



709 710 711 712 713 714 715 716  
 7<sup>0</sup> M38(1) SCARCE 9<sup>0</sup> SG306 M41(1)U/M 10<sup>0</sup> SG311 M44(6)U/M 11- SG314 M47(5)U/M

1<sup>0</sup> SG350wi INVERTED WATERMARK



727



717 718 719 720 721  
 1<sup>2</sup> SG334 2<sup>0</sup> SG335 1<sup>0</sup> SG336 1<sup>0</sup> SG337 1<sup>0</sup> SG349

1<sup>0</sup> STRETFORD MANCHESTER 27 MY 15



722 723 724 725 726  
 2<sup>0</sup> N14(9) 1<sup>2</sup> N14(12) 1<sup>0</sup> N16(14) 1<sup>0</sup> N16(16) 1<sup>0</sup> TOCKWITH 30 JY 14



728 729 730 731 732 733

ELWORTH  
7 MY 15

BROMPTON  
NORTH ALBERTON  
NO 8 13

GREETLAND  
4 ME 14

LITTLEBOROUGH  
JA 15 15

BANTEER  
27 JA 1 - CORK

734



735

TRALEE 16 NO 1A

739



1 1/2<sup>d</sup> 735 N18(12) 8<sup>d</sup> SG4390 N28(1) 9<sup>d</sup> SG4392 N29(1) 9<sup>d</sup> N29(2) 9<sup>d</sup> SG4393 N29(3) 9<sup>d</sup> SG4393a N30(17) 10<sup>d</sup> N31(5)



740 741 742 743 744 745 746

10<sup>d</sup> SG4428 N44(1) 10<sup>d</sup> N44(2) 10<sup>d</sup> N44(3) 10<sup>d</sup> N44(4)

1/2<sup>d</sup> SG4439a 1<sup>d</sup> SG4440c 1 1/2<sup>d</sup> SG4441d 2<sup>d</sup> SG4442b

747



1/2<sup>d</sup> SMALL 1<sup>d</sup> 748 FORMAT 1 1/2<sup>d</sup> INVERTED 750

WATERLOO 751

DE LA RUE 752 216<sup>d</sup> SG4400 SPEC N64(13) R/E

755



756



757



DE LA RUE 51-SPEC N67(2) 101-SPEC N70(2)

BRADBURY WILKINSON 216<sup>d</sup> SG 413a N65(1) 216<sup>d</sup> SG 415 N65(4)



758 51-SG416 N68(3)

759 51-SG416

760 101-SG417 BRACKISH BLUE 761 101-N71(3) STEEL BLUE



762 1934

216<sup>d</sup> SG 450

763 51-SG451

764 101-SG452

765

RE-ENGRAVED



1934 RE-ENGRAVED

766

767

768



A 11

20 SG324 1/2 N2(3) 1/2 SG325 1/2 N2(5) U/M 10 N7(3) 10 SG330



770 10 SG332 N9(1) 771 10 SG334 N3(2) 772 1/2 N5(2) U/M 773 10 SG345 N12(1) U/M 774



775 10 SG349 N13(2) 776 M15-PERF 777 1/2 SG356 U/M N14(14) 778 10 N16(8) 779 1/2 SG366 N18(10) U/M



780 20 SG N19(17) 781 SG376 366 30 N22(2) U/M 782 40 SG378 40 N23(3) 783 40 SG379 U/M N25(1) 784 50 N25(2) 785 70 SG387 U/M N27(6)



786 10 SG390 N28(1) 787 90 N29(2) 788 100 N31(5) 789 11- N32(7) 790 1/2 SG418 1/2 N33(1) U/M 791 1/2 N33(5) U/M 792 10 SG419 N34(1) U/M 793 10 N34(4) U/M



794 60 A37 U/M HARRISON 795 796 797 798 799 800

1913  
MULTIPLE  
CYPHER

1/2 N15e  
and  
10 N17e  
U/M COIL  
Join Pairs  
Good Perfs  
SCARCE

5123 NLOX



A 37



794 60 A37 U/M HARRISON 795 796 797 798 799 800



60 805  
11- 806

1/2 SG420 N35(1) U/M

801

1/2 N35(7) U/M

802

40 N39(1)

803

804





1<sup>o</sup> SG 434w1 1<sup>2</sup> SG 436w1 1<sup>2</sup> SG 434a5w

050



835 836 837

PEARL FLAW



838



839

844

845

846

HAIR FLAW RETOUCHEE



840

841

842

843



847 851 848



1½  
SGPB(E)  
TYPE 2  
G1 NO DOT

←  
849



1½  
SGPB3A(1)  
INVERTED  
NML

←  
850  
MISSING  
PAGE VAR



←  
851



852



853



854

856 ↓

C  
38



857 ↓

B  
37



858 ↓

B  
37



859 ↓

D  
38



860 ↓

H  
40



861 →

C  
38



862

D  
38



863 ↓

G  
40



864 ↓

D  
38



865 ↓

E  
39



866 ↓

E  
39



867 ↓

P  
44



868 ↓

H  
40



869 ↓

K  
42



870 ↓



871 ↓

K  
42



K  
42



L  
42



J  
41



T  
46



872

873

874

875

O  
44



151



191



196



876

877

878

879

880 ↓

68



881 ↓

277



882 ↓

13



883 ↓

H  
40



E  
39

11



885 ↓

D  
38



RARE BLOCKS

10



886 ↓

887 ↓

888 ↓

P  
44

120



889

K  
42

74



RARE BLOCKS 890 ↓

P  
44

30



891 RARE

892 BLOCKS

893



10/- 54478  
Q32h  
Dark Line  
across  
bottom  
Dot on scroll  
right  
stem



894  
896 9004 895



1° SG 504D Spec Q13 1B



£156,478c

1937 DARK COLOURS SIDEWAYS W/MK

898



1941 LIGHT COLOURS SIDEWAYS W/MK

899



901

1950 1d SG 504 IMPERF MARGINS ABOVE



897

2<sup>o</sup> SG 506a SWAN HEAD to 2 Retouched 1937 DARK COLOURS Set of 5 SG 462a to 466a



902

904

1937 DARK COLOURS SET of 15 SG 462 to 475



903

1958 5/- SG 537A

10/- SG 538A DE LA RUE



912

913  
912

1958 DE LA RUE CASTLES 2/6 to £1 SG 536A to 539A UNMOUNTED MINT SCARCE

914



915

1939-48 HIGH VALUES SET of 6 SG 476 to 478c

1948 SILVER WEDDING SG 493/A



906

909

1941 LIGHT COLOURS Set of 3 SLW

1941 LIGHT COLOURS INV SET of 3



907

908

1950 CHANGE COLOURS Set of 4 SLW

1950 CHANGE COLOURS INV WMK SET of 5



911

1937 DARK COLOURS INV WMK Set of 5

1958 40 CROWNS U/M COIL LEADER



905

916



1958-61 1/2° SG 589 w/

3° SG 592a u/m

1958-65 MULTIPLE CROWNS SIDWAYS WMK SET

917



GRAPHITE



918



920

1960-67 8° PHOSPHOR SG 617b

1959 51-SG 596 2nd DELA RUE

1960-67 PHOSPHOR INK 2 1/2 SG 614a WMK



921  
919  
924

FIRST CASTLES MINATURE SHEET MS 2530



923

922

1974 4 1/2° TRANSLUCENT



933

1958 to 1965 3° MULTIPLE CROWNS PLAIN and PHOSPHOR SG 575 and SG 615

STATES 925



1/6° SG 704 DOWNWARD SHIFT DESIGN INTO LOWER M.

6° SG 711 GOOD COLOUR SHIFT FADING RIGHT + UPWARDS

9° SG 715d PLAIN BROWN OMITTED

9° SG 715pd PHOSPHOR BROWN OMITTED



927

928

931

932

6P EUROPA SG1621 FIRST DAY CDS



3<sup>o</sup> SG 713pc PHOS MISSING 'T' 2926

1967 116<sup>o</sup> SG 715 SIGNIFICANT SHIP OF NEW BLUE



1977 SG 1037 DRY PRINT U/M



116<sup>o</sup> SG 716 P PHOS



1980 12P SG 1125p Ea MISSING 'P' invabe U/M



U/M  
NEW  
BLUE  
OUTFED  
2nd +  
7th  
FLAGS  
←  
934

←  
937



1967 9<sup>o</sup> SG 715 WI PLAIN INV WMK



1967 116<sup>o</sup> SG 716 WI PHOS INV WMK



3<sup>o</sup> SG 713c PLAIN



MISSING  
'T'  
←  
929

931  
930  
LEXAZZOR - ROR - A  
929  
928  
927  
926  
925  
924  
923  
922  
921  
920  
919  
918  
917  
916  
915  
914  
913  
912  
911  
910  
909  
908  
907  
906  
905  
904  
903  
902  
901



1<sup>o</sup> ZA PLATE 96    1<sup>o</sup> ZA PLATE 96    2<sup>1/2</sup> Z7 PLATE 1    3<sup>o</sup> Z10    PLATE 4 WHICH EMBLEMS PLATE 6    PLATE 11    PLATE 12  
3<sup>o</sup> Z11    3<sup>o</sup> Z12    4<sup>o</sup> Z17    4<sup>o</sup> Z17



940 6<sup>o</sup> Z24 (8)    941 6<sup>o</sup> Z25 (12)    942 6<sup>o</sup> Z27 (12)    943 11-Z38 (7)    944 11-Z39 (8)    945 21-ZA0 (1)    946 10VNET UN RES    947 51-Z47 (1)



948 6<sup>o</sup> Z16 PAIR    949 11-Z18    950 1<sup>o</sup> Z38b    951 6<sup>o</sup> Z30    952    953    954 2<sup>o</sup> ZA PLATE 14    955 1<sup>o</sup> Z2 PLATE 140



956 2<sup>1/2</sup> Z5 PLATE 1 PAIR    957 2<sup>1/2</sup> Z7 PLATE 4    958    959    960    961    962    963

BEYROUT

2½° Z6 PLATE 2



2½° Z8 PLATE 20



4° Z15 PLATE 15



2½° Z9 PLATE 22



962

10° Z24(1) 11-Z20(1A) 4-Z29



967

968

969

964  
½° Z31 + 2° Z35



970

2½° Z43



976

1° VENETIAN

5° Z37

1° Z38 14 DOTS

½° Z40

2° Z42

4° Z44



971

972

973

974

975

977

DEEPCUT CAMP

BLUE HAMPTON COURT

SHORNCLIFFE CAMP

SHORNCLIFFE CAMP



978



979



984

HORNCLIFFE CAMP

LARK HILL CAMP

FIELD POST OFFICE 3 DE 15 B

LONGMOOR CAMP



980



986

982



ARMY POST OFFICE X9 JUL 2 981



985

FIELD POST OFFICE 22 FE 16 7

WHITTINGTON BARRACKS



987



983

PLATE 60 PL. 90 PL. 95 PL. 212 W.M.K. ANCHOR PL. 3 PL. 8 PL. 11 PL. 15 PL. 22  
 1° Z72 1° Z74 1° Z74 1° Z74 2½° Z79 2½° Z81 2½° Z81 2½° Z81 2½° Z83



988 989 990 991 992 993 994 995 996  
 3° Z86(6) 6° Z99(5) 6° Z100(6) 6° Z101(6) 6° Z103(11) 11-Z115(4) 51-Z121(1) 51-Z121(2) SMALL



997 998 999 1000 1001 1002 1003 1004  
 6° Z22 EMBOSSED CRIMEA 1° Z2 C1 RATE 197 1° Z11 RATE 175 1° Z13 SG24 C3 PLATE 11 1° Z13 SG24 C3 PLATE 9 1° Z15 RATE 191



CRIMEA



CYPRUS



NILOSIA



GIBRALTAR

1023 1° Z19 RATE 186

1024 194 203

1026 214

1027 2½° Z26 3

1028 2½° Z26 7

1025



1029 1030 1031 1032 1033 1034

GIB

6°Z42 6°Z44 PLATES 6°Z46(9) 6°Z49(12) 1°Z71



MALTA

10°Z30 PL 85

1035 1036 1037 1038 1039

99 115 140 154 164 190 204 2°Z34 PL. 13



1041 1042 1043 1044 1045 1046 1047 1048 1049

2°Z34 PLATE 13 + 3°Z43 PLATE 6x2 2½Z36 2 2½Z38 4 3°Z41 3°Z42 4 3°Z43 5

MALTA



MALTA

3°Z43 PLATE 6 1050 Z43 7 4°Z47 4°Z48 4 4°Z49 13 6°Z57 6 6°Z63 12 6°Z64 13



1°Z211 PLATE 138 1056 160 2½Z216 1 1059 2½Z218 4 SALONICA ½Z209 1060 1061 1062 1063 5½Z87 RATE 4 RARE



1064

1066 1067 1068 1069 1065 4°Z227 18 6°Z281 13

2½Z218 PLATE 10 2½Z219 18 3°Z221 9 4°Z225 16



SMYRNA

6°Z231 PLATE 14 1070 1071 1072 1073 1074 1075 11-Z237 RARE 7



SMYRNA

1076 1077 1078 1079 1080

SMYRNA  
STAMPS  
SOUTH AFRICA  
SOUTH AFRICA  
SOUTH AFRICA



SMYRNA

1082

1083



STAMPS

1085

1086

1087

1084

1088

1089

NATAL FIELD FORCE ARMY POST OFFICE 43 S.AFRICA

1/2° ZEERUST 2° BPO SOUTH AFRICA



1091

1092

1093

SOUTH AFRICA

APO JOHANNESBURG

BLOEMFONTEIN



SOUTH AFRICA

1/- Z17

1/- Z17  
5/- Z14

S  
U  
E  
Z

2 1/2° Z47  
P. 1

2 1/2° Z49  
8

4° Z56  
12

4° Z56  
13

9° Z71  
PASTRE

1/- Z75  
1(2)

S  
U  
E  
Z



1095

1096

1098

1099

1100

1101

1102

1103

TRISTAN

1<sup>o</sup> EDUARDO VII CDS

GV BLUE TRISTAN DA CUNHA

1 1/2 x 2 GV



DA CUNHA

BUENOS AIRES SOUTH

AMERICA

1106

51-Z28 PLATE 1

1<sup>o</sup> Z2  
PLATE 92

119

2<sup>o</sup> Z3 PLATE 9

3<sup>o</sup> Z5(4)  
EMBLEMS  
3<sup>o</sup> Z6  
PLATE 6



1107  
4<sup>o</sup> Z8  
PLATE 3

1108  
4<sup>o</sup> Z9  
PLATE 12

1109  
6<sup>o</sup> Z15  
PLATE 11

1110  
9<sup>o</sup> Z19(4)  
EMBLEMS

1111  
11-Z23  
PL. 1(2)

1111  
11-Z25  
PL. 4

1119  
11-Z25  
PL. 5



1112

BAHIA

1114

1115  
10 Z22  
PL. 108

1116

PERMANBUCO

1118

4<sup>o</sup> Z7  
PL. 13

11-Z18  
PL. 5

11-Z18  
PL. 7

4<sup>o</sup> Z26  
PL. 12

6<sup>o</sup> Z29  
PL. 9

11-Z37  
PL. 4



1120

RIO DE JANEIRO

1122

4<sup>o</sup> Z45  
PL. 10

6<sup>o</sup> Z48  
PLATE 8

9<sup>o</sup> Z52  
PL. 4

1123  
11-Z55  
PL. 4 EMBLEMS

21-Z58  
PL. 1

51-Z59 PL. 1



1127

1128

1129

1130

1131

CHILE

Z55  
1<sup>o</sup> PLATE 184

3<sup>o</sup> Z62 PLATE 8  
11-Z83 PLATE 6

3<sup>o</sup> Z62  
PLATE 10

6<sup>o</sup> Z71  
PLATE 8



1133

1134

1135

1136

1137

ARGENTINA

BRAZIL

BRIGUIANA

ARGENTINA

BRAZIL

1132

MT-IC

6°Z74 Plate 12



1138

9°Z80 Pl. 4 10°Z81 Pl. 1



1139 1140

6°Z71 Pl. 9 11-Z83 Pl. 4



1141

11-Z84 Plate 10



11-Z83 Plate 5



1142 1143

21-Z86 Plate 1



1144

51-Z88 Plate 1



1145

51-Z88 Plate 2



1146

ORDEN A RECORRER

6°Z12 Plate 6



1147

9°Z18 Plate 4



1148

51-Z53 Plate 1 51-Z53 Plate 2



1149 1150

8°Z14



1151

4°Z8 Plate 15



1152

10°Z23 Pl. 100



1153

65 CARTHAGENA ERROR

4°Z30 Pl. 15



1154

51-Z44 Plate 2



1155

4°Z54 Plate 15



1156

6°Z61 Plate 17



1157

SANTAMARÍA

4°Z116 Plate 11



1158

SAN VILLA

4°Z137 Plate 16



1159

216°SG178 NZ DUNEDIN



1164

222°ALACRAN

6°Z21 Pl. 15



1160

8°Z22 Pl. 1



1161

GUAYARQUIL

10°Z1 Plate 89



1162

4°Z3 Plate 7

1163

TAMPICO

RODOLFO









1245    1246    1247    1248    1249    1250

10Z24 PL72 A81    10Z22 A83    MAILBOATS 11-Z33 A86    10Z79 A99    6<sup>o</sup>B61 RARITY 'H'    10SG2 PL.217    1251 11-SG6 PL.13    1260 11-Z37



1252    1253    1254    1255    1256    1257    1258    1259

**RARE AND UNUSUAL ITEMS**

G.E.R. G.E.R. 4<sup>o</sup>SG154 SPECIMEN    6<sup>o</sup>J19(S) IMPERF AT BASE    6<sup>o</sup>on 6<sup>o</sup> K8B(9) STATE 2    6<sup>o</sup>on 6<sup>o</sup> SG 162A    SPECKS (1) 1) Printed both sides 2) Reverse side 3) NMK INV.



1267    1268    1269    1270    1272    1273    1274

PARTIAL Double Printing thro' halfpenny and lower parts of design



1284

2<sup>o</sup>SG038



1277

2<sup>o</sup>SG199 RPS CLK.



1279

1<sup>o</sup>Diela Design totally misplaced



1285

STAMPBOLL SG 333 ANILINE SCARLET



1293

11-N45(S) DEEP FAWN BROWN



1288

2<sup>o</sup>SG039



1278

1902 ST ANDREWS CROSS SG 210 (bn) INVERTED WATERMARK



1281

HAITI 1/2 Z1 PLATE 5 single C59



1299

1 1/2 SG 221 PORTSMOUTH OC 1905



1282

# ERIC PAUL

## STAMPS

### Illustrations

#### List N° 85

2<sup>D</sup> SG 14 Plate 4



1265

PARIS  
EXHIBITION  
PROOF



1261

2<sup>D</sup> DP 43  
NO LETTERS  
IN CORNERS



1262

2/6<sup>D</sup> SG 178  
CANCELLED CSC



1280

5/- Z147  
Plate 2  
F69 SAVANILLA



1294

5/- Z17  
Plate 1 C58 HAVANA



1298

5/- Z21  
Plate 2  
NICARAGUA  
GREYTOWN CDS



1295

2 1/2<sup>D</sup> SG 138  
Plate 2 BLUED PAPER  
CONSTANTINOPLE



1290

EGYPT  
BRITISH POST OFFICE EGYPT CDS's



1291

PANAMA  
1/- Z105  
Plate 13



1296

ASCENSION  
2/6<sup>D</sup> Z33a CDS



1289

VIRGIN ISLANDS  
6<sup>D</sup> Z3  
A13 TORTOLA



1300

P O BOX 44 MARPLE CHESHIRE ENGLAND SK6 7EE  
TEL: +44(0)161 427 2101 WEB SITE - [www.ericpaul.co.uk](http://www.ericpaul.co.uk)  
EMAIL: [info@ericpaul.co.uk](mailto:info@ericpaul.co.uk)